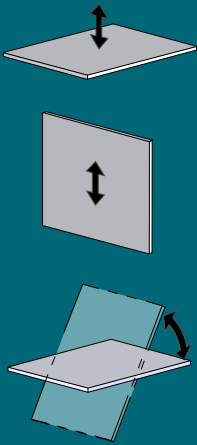


MTA4LP6FAC
200 lbs [90 kg]

MTA6LP6FAC
300 lbs [135 kg]



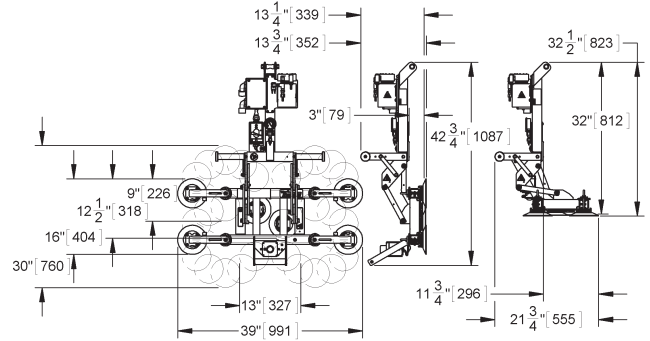
**THE ORIGINAL
& TRUSTED NAME
IN VACUUM LIFTING
EQUIPMENT**

**800.548.7341
WPG.com**

908 West Main - P.O. Box 368
Laurel, Montana 59044 U.S.A.
406.628.8231 (phone)
406.628.8354 (fax)

WOOD'S POWR-GRIP® QUADRA-TILT 200 & 300 (4 & 6 PADS)

These Powr-Grip® vacuum lifters feature multiposition pad arms and our innovative Quadra-Tilt linkage, which radically reduces the effort of tilting loads.



The Quadra-Tilt Lifters feature an innovative four-bar tilt mechanism that significantly reduces the effort of tilting loads between flat and upright positions. This tilt mechanism also reduces hazards associated with lifting loads from upright racks: When a load is tilted to either the upright or the flat position, the lifter maintains the load position automatically without using latches, eliminating the tendency for a load to “kick back” at the operator’s knees.

The MTA4LP6FAC and MTA6LP6FAC also feature multiposition arms (illustrated above) that accommodate a variety of load sizes and shapes. Holes or defects in the load surface are easily avoided because vacuum pads can attach to virtually any location on the load.

	MTA4LP6FAC	MTA6LP6FAC
Maximum Load Capacity	200 lbs [90 kg]	300 lbs [135 kg]
Load Movement	Assisted manual tilt, 90° between upright and flat	
Standard Features	Vacuum gauge Vacuum line filter Movable pad arms Spring-mounted vacuum pads Twist-lock electrical plug Multiple handles for easy load positioning Blow-off for quick release	
Available Options	G-Force™ hoist control (special order) Vacuum loss warning buzzer (93780AM) 2" [5 cm] pad spacers (97461) Voltage adaptation (special order) Alternative pad compounds, including ones for low-marking, temperature resistant and coated surface applications (special order) Alternative pad frame dimensions and capacities (special order)	
Standard Operating Power	120 volts AC, 60 hertz, 3 amps (240 volts AC, 50/60 hertz, 2 amps also available)	
Alternative Power Systems	DC power system (MTA4LP6FDSC or MTA4LP6FDSCS) Air (venturi) power system (MTA4LP6FAIRS or MTA4LP6FAIRS) (Specifications may not be as listed. Please contact us for more information.)	
Adjustable Pad Spread	Length: Min: 13" [327 mm], Max: 39" [991 mm] Width: Min: 9" [226 mm], Max: 30" [760 mm]	
Number / Size of Pads	4 / 6" [15 cm] diameter pads	6 / 6" [15 cm] diameter pads
Lifter Weight	65 lbs [30 kg]	70 lbs [32 kg]
Apply	1 second (approximately)	2 seconds (approximately)
Release	1 second (approximately)	1 second (approximately)
Design Standards	ASME B30.20 (BTH-1 Design Category "B", Service Class "0") (See www.WPG.com for more information.)	

Based on product information at time of publication. Environmental conditions can affect product performance and longevity; consult the product instructions on WPG.com or contact a Technical Sales Representative for more information.

Wood's Powr-Grip products are sold through authorized dealers.