

INTENDED FOR PROFESSIONAL USERS OF EQUIPMENT

# INSTRUCTIONS MANUAL



908 W. Main • P.O. Box 368

Laurel, MT USA 59044

(1) 800-548-7341

(1) 406-628-8231

[www.wpg.com](http://www.wpg.com)



**READ AND UNDERSTAND  
BEFORE USING THIS EQUIPMENT**



## ALL-TERRAIN DOLLY

Stock number: 96670AM



Original Instructions © Wood's Powr-Grip Co., Inc.

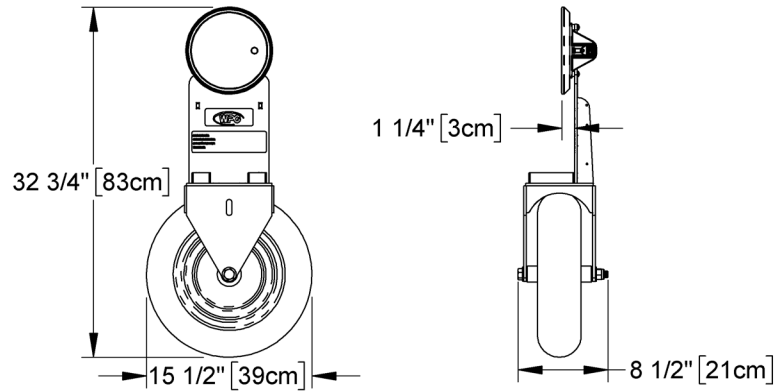


# TABLE OF CONTENTS

<b>SPECIFICATIONS .....</b>	<b>2</b>
<b>FEATURES.....</b>	<b>3</b>
<b>INTENDED USE .....</b>	<b>4</b>
LOAD CHARACTERISTICS.....	4
INADVERTENT LOADING .....	5
OPERATING ENVIRONMENT .....	5
DISPOSAL OF THE DOLLY.....	5
<b>USE .....</b>	<b>6</b>
BEFORE USING THE DOLLY .....	6
Taking Safety Precautions .....	6
TO ATTACH THE DOLLY TO A LOAD.....	6
TO TRANSPORT THE LOAD .....	9
Monitoring the Red-Line Indicator.....	10
TO REMOVE THE DOLLY FROM THE LOAD .....	11
AFTER USING THE DOLLY .....	12
Storing the Dolly .....	12
Transporting the Dolly .....	12
<b>INSPECTIONS, TESTS AND MAINTENANCE .....</b>	<b>13</b>
TO DETACH THE HAND CUP FROM THE DOLLY.....	13
<b>REPLACEMENT PARTS.....</b>	<b>13</b>
<b>REGISTRATION AND LIMITED WARRANTY .....</b>	<b>14</b>
TO REGISTER THIS WPG PRODUCT .....	14
ABOUT THE LIMITED WARRANTY .....	14
Obtaining Warranty Service or Repair Service.....	14

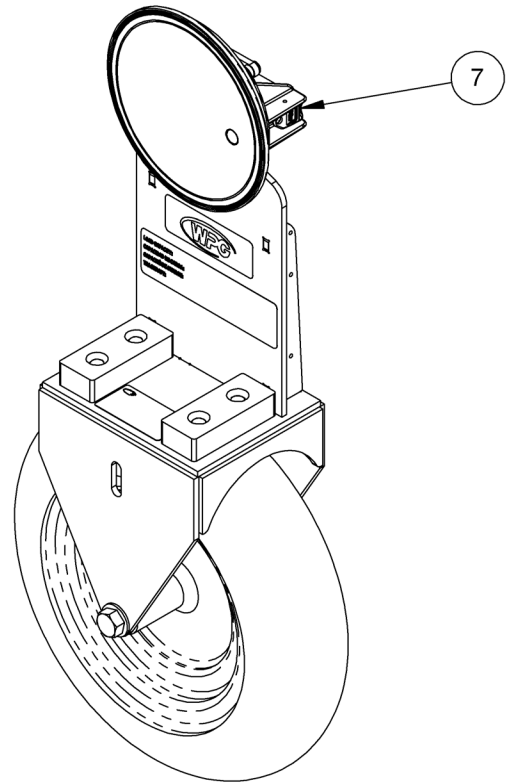
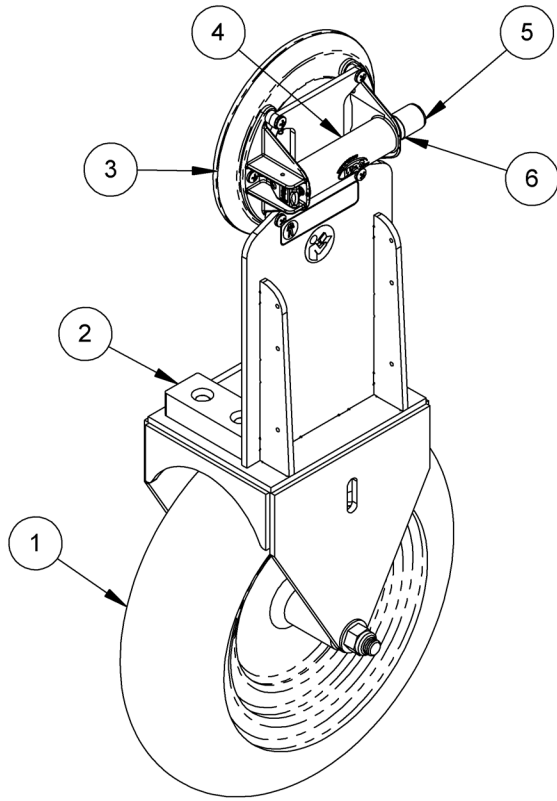
# SPECIFICATIONS

<b>Product Description</b>	Designed for use with two or more people, this fixed-wheel device provides a way to transport glass or other materials over rough terrain, using vacuum to attach a load.
 <b>Load Capacity</b>	400 lbs [180 kg] with 3 or more users 200 lbs [90 kg] with 2 users 100 lbs [45 kg] with 1 user <i>Note: Load must be balanced. For loads greater than 200 lbs [90 kg], 2 users must support the load while the 3rd user attaches the dolly to the load.</i>
<b>Product Weight</b>	17 lbs [7.7 kg]
 <b>Operating Temperatures</b>	10° — 120° F [-12° — 49° C]



# FEATURES

Features shown here are underlined> on their first appearance in each section.



- |   |                           |   |               |   |                    |
|---|---------------------------|---|---------------|---|--------------------|
| 1 | WHEEL WITH PNEUMATIC TIRE | 2 | RUBBER BUMPER | 3 | VACUUM PAD         |
| 4 | HAND CUP                  | 5 | PLUNGER       | 6 | RED-LINE INDICATOR |
| 7 | VALVE RELEASE LEVER       |   |               |   |                    |

For information about specific parts, see [“REPLACEMENT PARTS”](#).

# INTENDED USE

## LOAD CHARACTERISTICS

Loads should be rectangular sheet materials and similar objects (eg, windows, flat glass).

Make sure the dolly is intended to transport each load according to these requirements:



**Do NOT use dolly to transport explosives, radioactive substances or other hazardous materials.**

- The load weight must not exceed the Maximum Load Capacity.
- The load must be a single piece of nonporous material with a flat and relatively smooth contact surface.<sup>1</sup>
- The load can have a frame, provided that it does not protrude more than 1" from the load surface on the side where the vacuum pad is attached (see ["To ATTACH THE DOLLY TO A LOAD"](#)).
- The load's surface temperature must not exceed the Operating Temperatures.<sup>2</sup>
- 72" [183 cm] is the load's maximum *height* for use with the dolly.
- The load's maximum *length* is determined by its allowable overhang.<sup>3</sup>
- Although load thickness is not restricted, it may affect the lifter's tilt angle and the amount of operator effort required for handling loads.



**Do NOT attach dolly to rough or porous materials, such as unfinished wood or rough-cut stone.**



**Do NOT use dolly if load material cannot support itself during transport.**

*Note: Standard vacuum pads can stain or deform load surfaces with light colors or soft coatings. Test such surfaces for damaging effects before using the dolly.<sup>4</sup>*

1..... A "single piece" of material includes curtainwall assemblies, unitized glazing systems and similar construction units.

2..... Vacuum pads made from a heat-resistant rubber compound can enable you to lift loads with higher surface temperatures. Contact WPG or an authorized dealer for more information.

3..... The allowable overhang is the amount of load material that can extend sideways beyond the dolly without breaking or otherwise being damaged. This depends on the load material, its thickness, and the angle of handling (if any). Since every material has different physical properties, the allowable overhang must be evaluated separately for each load type. Contact WPG or an authorized dealer for more information.

4..... Alternative rubber compounds are available for these purposes. Contact WPG or an authorized dealer for more information.

## INADVERTENT LOADING

Make sure to account for any inadvertent loading that may negatively affect lifting capacity, such as external force that effectively increases load weight (eg, when a load of sheet material reacts to wind gusts).

## OPERATING ENVIRONMENT

Make sure the dolly is intended for use in each work environment, given the following restrictions:

- This dolly is not intended for any environment that is dangerous to the operator or damaging to the dolly.
- Do not use dolly in rain or other unsuitable conditions.



***Never use dolly in dangerous environments.***



***Moisture on contact surface of load or vacuum pad may cause unexpected load release and personal injury.***

- The work environment is limited by Operating Temperatures.



## DISPOSAL OF THE DOLLY

Dispose of the dolly in compliance with all local codes and applicable regulatory standards.

## BEFORE USING THE DOLLY

Make sure the dolly is capable of performing each intended task, and determine the number of users needed (see “SPECIFICATIONS” and “[INTENDED USE](#)”).

Remove all shipping materials and save them with the shipping container for future use.

### Taking Safety Precautions

- Read and understand the [hand cup instructions](#).
- Be trained in all industry and regulatory standards for using the dolly in your region.
- Follow trade association guidelines about precautions needed for each load material.
- Check the pressure of the [pneumatic tire](#). If needed, fill to the recommended level marked on the tire.<sup>1</sup> Then make sure all other parts are fully functional.



***Read all directions and safety rules before using dolly.***



***Always wear appropriate personal protective equipment.***



***Do not exceed pressure indicated on tire.***

## TO ATTACH THE DOLLY TO A LOAD

*Note: Additional Powr-Grip® hand cups can be used to ease attachment.*

- 1) Clean the face of the [vacuum pad](#) (fig. 1A) and the [rubber bumpers](#) using soapy water or other mild cleansers to remove any oil, dust and other contaminants. Then allow them to dry.

**1A**



1..... The tire pressure may be set to adjust for the type of terrain, the weight of the load or another determining factor.





2) Starting with a load in the upright orientation, attach the dolly either to a vertical edge or to the lower, horizontal edge.

- For *vertical attachment*, center the dolly between the top and bottom of one vertical edge of the load (fig. 2A).
- For *horizontal attachment*, one or more users must lift a corner of the load while another user centers the dolly from end to end on the bottom edge of the load (fig. 2B).



**Always use proper technique to lift load.**

3) Apply pressure to the dolly so that ...

- the rubber bumpers (fig. 3A) fit tightly against the edge of the load, and;
- the vacuum pad fits tightly against the load surface.



## USE

- 4) Pump the plunger until the red-line indicator stays hidden (figs. 4A-B), indicating that the vacuum pad is securely attached.



- 5) After the dolly is attached, allow the weight of the load to rest on the bumpers. This may require you to rotate the load edgewise.



***Make sure rubber bumpers support full weight of load.***

***Caution:*** The dolly should never be left unattended while attached to a load.

## TO TRANSPORT THE LOAD

Perform the following actions concurrently:

- Position a user at each end, to guide the load and ensure its stability (fig. 1A).

*Note: Each user should support no more than 50 lbs [23 kg] of the load weight while the dolly is in use.*



- Make sure the load stays upright, with a minimum angle of tilt (fig. 1B).



**Keep load upright during transport.**

**Caution:** Do not allow the load to tilt more than 15° out of the vertical plane.<sup>1</sup> Exceeding this angle can result in load breakage, load release and personal injury (see “[LOAD CHARACTERISTICS](#)”).



<sup>1</sup>..... It may be necessary to limit the angle more than this, depending on the strength of load material or the roughness of terrain.



- Move and stop the dolly as needed, making sure all users assist in controlling speed and stability (fig. 1C).



## Monitoring the Red-Line Indicator



***Always monitor red-line indicator when dolly is in use.***

Check the red-line indicator (circled in fig. 1D) frequently, to make sure the vacuum pad is securely attached to the load. If the red line appears while the dolly is in use, one user must repump the plunger until the red line stays hidden again, while the remaining users support the load (see [“To ATTACH THE DOLLY TO A LOAD”](#)). If the hand cup does not maintain vacuum, discontinue use until the fault is corrected (see [hand cup instructions](#)).

Do not attempt to support a load with the dolly while the red-line indicator is visible; such an attempt could result in a load release and personal injury.

**1D**



***Do not use dolly to support load when red-line indicator is visible.***

## TO REMOVE THE DOLLY FROM THE LOAD

**!** *Make sure load is fully supported before releasing vacuum pad.*

**!** *Always use proper technique to lift load.*

- 1) As one of more users continue to maintain load stability, carefully set one corner of the load on the ground or a stable support until there is no load weight on the dolly (fig. 1A).

When necessary, rotate the load 90° edgewise, to provide better access to the dolly and/or to position the load.



- 2) Press the valve release lever (circled in fig. 2A) until the vacuum pad disengages completely from the load.

*Note: Make sure to keep a firm grasp on the dolly, to prevent it from falling when released.*



Remove the dolly and set it aside. The other user(s) can now carefully set down the other corner of the load.

## AFTER USING THE DOLLY

**Caution:** Do not set the dolly against any surface that could soil or damage the vacuum pad.

Use the cover supplied to keep the vacuum pad clean (fig. 1A).

**1A**



## Storing the Dolly

Store the dolly in a clean, dry location.

## Transporting the Dolly

Secure the dolly in the original shipping container with the original shipping materials or equivalent.

# INSPECTIONS, TESTS AND MAINTENANCE

Although the dolly requires little maintenance, it must be inspected routinely:

- **Before each use:** Make sure that the vacuum pad and rubber bumpers are in good condition and free of contaminants or debris. Clean the surfaces as necessary (see “[To ATTACH THE DOLLY TO A LOAD](#)”). If replacement is needed, see “TO DETACH THE HAND CUP FROM THE DOLLY” and “REPLACEMENT PARTS” below.
- **Every 20-40 hours of use:** Inspect the wheel and pneumatic tire for damage, proper tire pressure, and to verify ease of movement.
- **Every 250-400 hours of use:** Inspect other page 4 for any damage or deficiency.

If any fault is found, correct it and perform the next most frequent inspection before using the dolly.

## TO DETACH THE HAND CUP FROM THE DOLLY

Unscrew the 4 bolts that secure the hand cup to the dolly's mounting holes (fig. 1A) and separate the hand cup from the dolly. Make sure to save the 4 spacers (two are circled in fig. 2A) and bolts for future use.



## REPLACEMENT PARTS

Stock No.	Description	Qty.
91400	8" [20 cm] Hand Cup with ABS Handle	1
66493	Wheel with 15¼" OD Pneumatic Tire	1
49290	Rubber Bumper	2
29353	Nylon Pad Cover	1
12815AM	Nylon Spacer	4
10005	1-4/20 x 1" Pan Head Machine Bolt	4

**SERVICE ONLY WITH IDENTICAL REPLACEMENT PARTS,  
AVAILABLE AT [WPG.COM](#) OR THROUGH AN AUTHORIZED WPG DEALER**

# REGISTRATION AND LIMITED WARRANTY

## TO REGISTER THIS WPG PRODUCT

Go to the [PRODUCT REGISTRATION](#) page at [wpg.com](#) and complete the form. Registration keeps you advised of important updates and notifications, and simplifies inquiries to WPG regarding your product. Registration is **not** required to activate your Limited Warranty (see next section).

## ABOUT THE LIMITED WARRANTY



*Note: Read the [WARRANTY RETURN FORM](#) at [wpg.com](#) for important details about the Limited Warranty.*

Wood's Powr-Grip® (WPG) products are warranted to be free from defects in manufacturing and materials for 1 year from the date of purchase.

If a problem develops during the warranty period, follow the instructions below to obtain warranty service. If inspection shows that the product has a defect, WPG will repair or replace the product without charge.



## Obtaining Warranty Service or Repair Service

**For customers in the U.S. and Canada:** Go to the [EXCHANGES, REPAIRS, & WARRANTIES](#) page at [wpg.com](#) and click the applicable link. Alternatively, you may contact the WPG Technical Service Department (see contact information below).

**For customers in all other localities:** Contact the WPG Technical Service Department (see contact information below) or your dealer for assistance.

ADDRESS	EMAIL	PHONE
Wood's Powr-Grip Co., Inc. 908 West Main St. Laurel, MT USA 59044	<a href="mailto:contactus@wpg.com">contactus@wpg.com</a>	(1) 800-548-7341 (1) 406-628-8231