

AIR-POWERED VACUUM CUPS

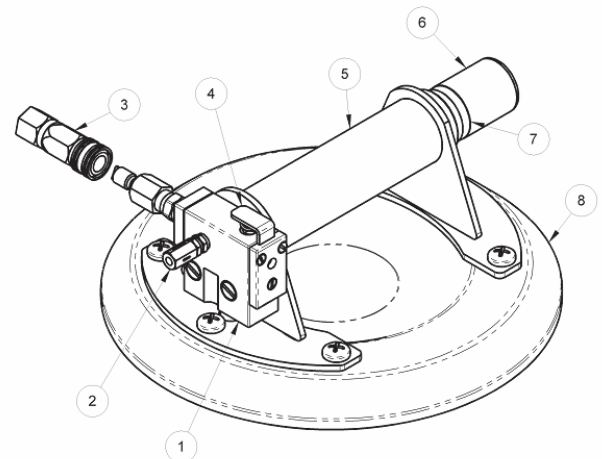
By combining Powr-Grip's Vacuum Cups with a compressed air supply, these products provide better ways to handle loads manually on production lines. The Air-Powered Vacuum Cups attach quickly without any pumping, and they never need to be repumped during operation.



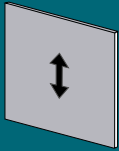
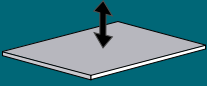
With the capacity for nearly any manual lift, Wood's Powr-Grip® hand-held vacuum cups are rugged and dependable.

Features	<ul style="list-style-type: none"> • Uses continuous vacuum supply to pick and place loads. (User-supplied air compressor generates vacuum through on-board venturi) • Durable metal handle. • Fast attachment on smooth, nonporous flat surfaces. • Red-line vacuum indicator shows when vacuum cup is ready to lift load. • No repumping required. • Release mechanism permits quick and complete release. • Supplied with protective carrying case.
Vacuum Pad	Flat, 8" [20 cm] diameter (model G0695)
Load Capacity	125 lbs [57 kg] per vacuum cup
Standard Operating Power	Compressed air, 2 SCFM [57 liters/minute] @ 75 psi [517 kPa]

1. Venturi Block
2. Check Valve
3. Quick Connect Coupler
4. Release Mechanism
5. Handle
6. Plunger
7. Red-Line Vacuum Indicator
8. Vacuum Pad



N4950AIR
 125 lbs [57 kg]



**THE ORIGINAL
 & TRUSTED NAME
 IN VACUUM LIFTING
 EQUIPMENT**

908 West Main - P.O. Box 368
 Laurel, Montana 59044 U.S.A.
 406.628.8231 (phone)
 406.628.8354 (fax)

800.548.7341
www.WPG.com

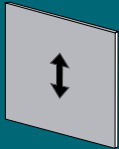
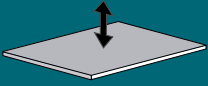
Wood's Powr-Grip products are sold through authorized dealers.

Rev. 0.2/04-12 Spec. Sheet **1AIR**

Environmental conditions can affect product performance and longevity; consult the product instructions on www.WPG.com or contact a Technical Sales Representative for more information.
 Based on product information at time of publication.

N10TAIR

150 lbs [68 kg]



**THE ORIGINAL
 & TRUSTED NAME
 IN VACUUM LIFTING
 EQUIPMENT**

908 West Main - P.O. Box 368
 Laurel, Montana 59044 U.S.A.
 406.628.8231 (phone)
 406.628.8354 (fax)

800.548.7341
www.WPG.com

AIR-POWERED VACUUM CUPS

By combining Powr-Grip's Vacuum Cups with a compressed air supply, these products provide better ways to handle loads manually on production lines. The Air-Powered Vacuum Cups attach quickly without any pumping, and they never need to be repumped during operation.

With the capacity for nearly any manual lift, Wood's Powr-Grip® hand-held vacuum cups are rugged and dependable.



Features	<ul style="list-style-type: none"> • Uses continuous vacuum supply to pick and place loads. • (User-supplied air compressor generates vacuum through on-board venturi) • Durable metal handle. • Heavy-duty vacuum pad with replaceable foam ring for effective attachment on many textured surfaces. • Red-line vacuum indicator shows when vacuum cup is ready to lift load. • No repumping required. • Release mechanism permits quick and complete release. • Supplied with protective cover.
Vacuum Pad	10" [25 cm] diameter, with replaceable foam ring (model VPFS10T)
Load Capacity	150 lbs [68 kg] per vacuum cup
Standard Operating Power	Compressed air, 2 SCFM [57 liters/minute] @ 75 psi [517 kPa]