



ROTATE AND TILT HAND CUP FRAMES

MODELS: HFH6000 AND HFV6000

Available in horizontal and vertical orientations, these lifters harness the power of WPG's trusty hand cups.

High-Quality Construction

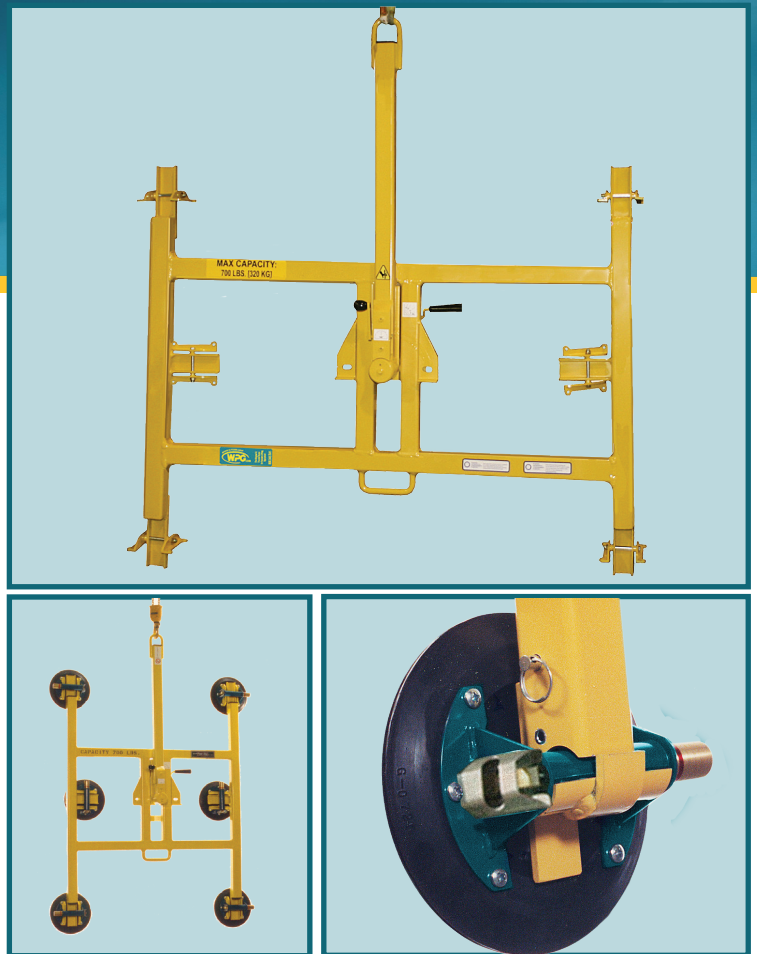
Gives you the same safety-minded sturdiness as WPG's premium vacuum lifters.

Light Weight

Allows easy transport and load positioning, and makes it possible to use lighter-capacity hoisting setups.

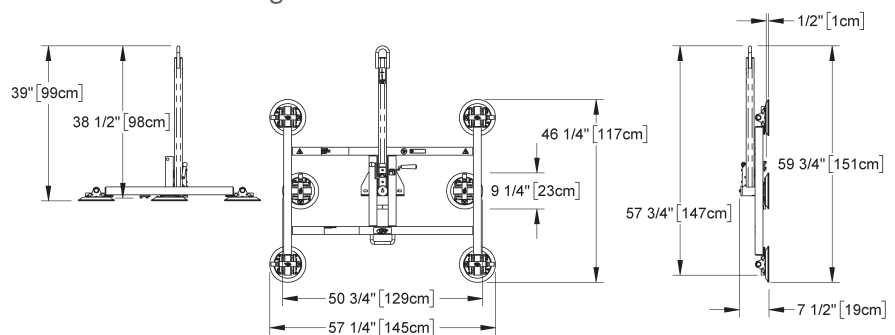
Affordability

Makes it a great light-duty choice for lifting materials that have larger dimensions.

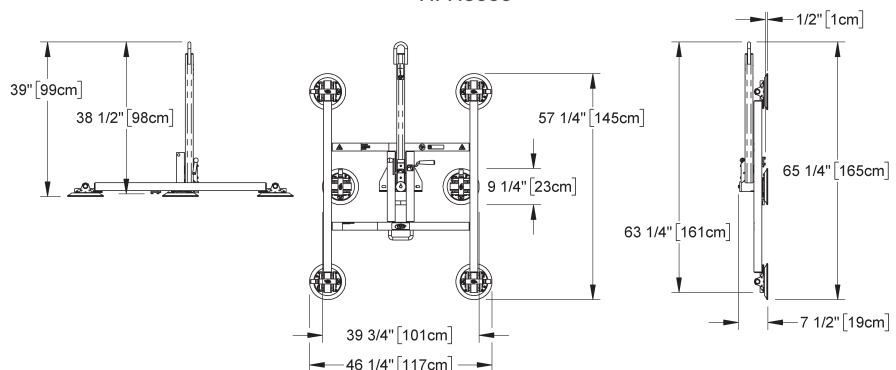


Units can be tilted **ONLY** when the lift bar is locked in the center position, as shown in photos.

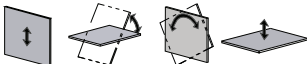
Use only where cups can be monitored and, if necessary, repumped.



HFH6000



HFV6000

Models	HFH6000 HFV6000		
Capacity with Hand Cups* (sold separately)	N4950 8" [20 cm]	N5450 9" [23 cm]	N6292 11" [28 cm]
Per-Pad Capacity	90 lbs [40 kg]	110 lbs [50 kg]	150 lbs [68 kg]
Maximum Load Capacity	540 lbs [245 kg]	660 lbs [299 kg]	700 lbs [320 kg]
Standard Pad Spread to outside edge of cups (Hand cups sold separately)	HFH6000 45" x 56" [115 cm x 142 cm]	HFH6000 46-1/4" x 57-1/4" [117 cm x 145 cm]	HFH6000 49" x 60" [124 cm x 152 cm]
	HFV6000 56" x 45" [142 cm x 115 cm]	HFV6000 57-1/4" x 46-1/4" [145 cm x 117 cm]	HFV6000 60" x 49" [152 cm x 124 cm]
Lifter Weight	85 lbs [39 kg]	85 lbs [39 kg]	95 lbs [43 kg]
Load Movement	Manual rotation, 180° edgewise with locking in three positions. Manual tilt, 90° between upright and flat, with automatic latching in upright position. Units are available in horizontal configuration (HFH) for tilting horizontally oriented loads or in vertical configuration (HFV) for tilting vertically oriented loads. 		

STANDARD FEATURES

Bolt-On Hand Cup Mounts

Allow customers' hand cups to attach loads to the lifter

AVAILABLE OPTIONS

Specialized Hand Cups

Provide the best match for your lifting needs. The available options include:

- Cups for Curved Surfaces
- Low-Marking Cups
- Cups with Low Vacuum Audio Alarm

Specifications may not be as listed above. Please contact WPG for more information.

Custom Pad Frame Sizes and Capacities

Accommodate customers' specific load weight and dimension requirements

DESIGN STANDARDS

ASME B30.20 (BTH-1 Design Category "B", Service Class "0"): Industry standards established by the American Society of Mechanical Engineers (ASME) and published by the American National Standards Institute (ANSI)

Based on product information at time of publication Environmental conditions can affect product performance and longevity; consult the product instructions on WPG.com or contact a Technical Sales Representative for more information.

