



# POWR-FRAMES 1000 AC

## MODELS: PFHL89AC & PFHS89AC

These reliable Powr-Grip® models are an ideal lifting solution when used on loads of a specific size.

### High-Flow Vacuum Pump

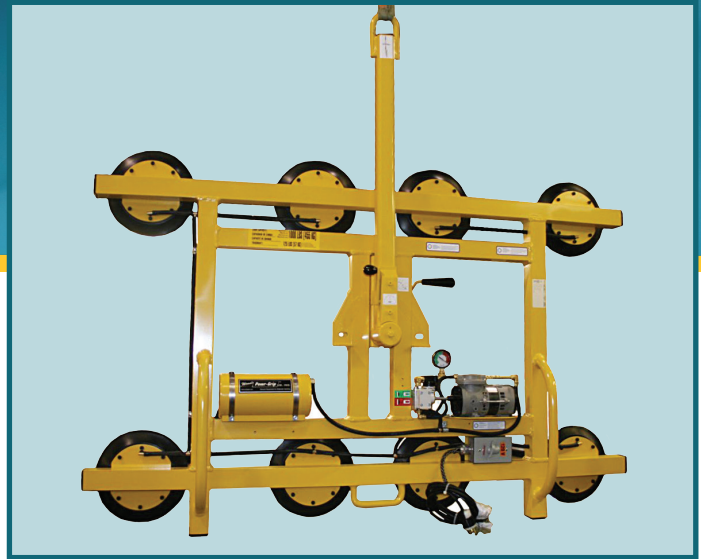
Coupled with a quick release yields faster cycle times.

### 90° Tilt and 180° Rotation Capabilities

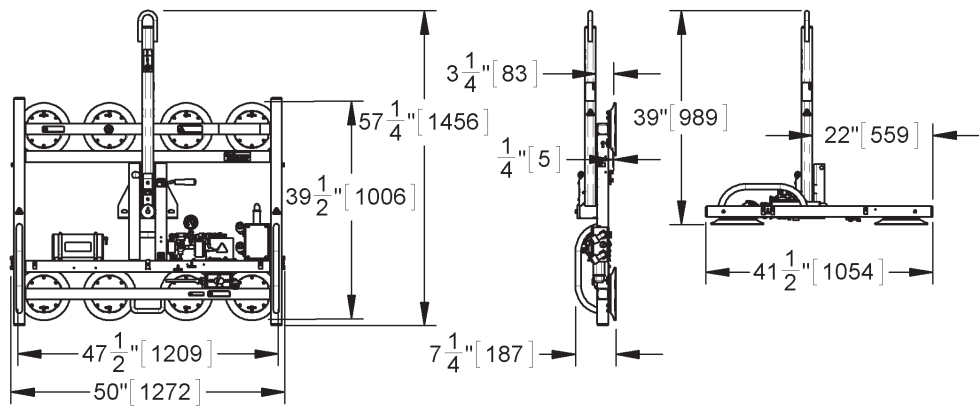
Provide operators with more load positioning versatility.

### Affordability and Safety

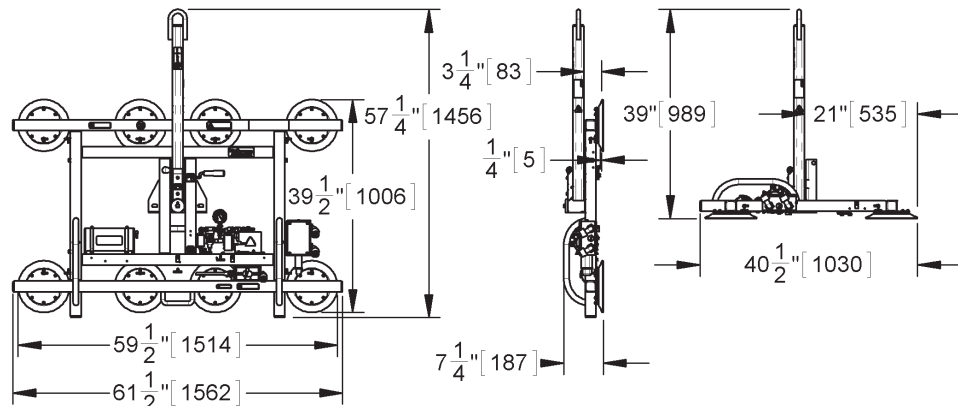
Come together with a fixed-sized frame that provides cost efficiency and peace-of-mind features such as a twist-lock electrical plug and vacuum reserve tank.

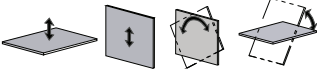


SMALL FRAME  
PFHS89AC



LARGE FRAME  
PFHL89AC



<b>Model</b>	PFHL89AC	PFHS89AC
<b>Maximum Load Capacity</b>	1,000 lbs [455 kg]	1,000 lbs [455 kg]
<b>Standard Pad Spread</b>	39-1/2" x 59-1/2" [1,006 mm x 1,514 mm]	39-1/2" x 47-1/2" [1,006 mm x 1,209 mm]
<b>Number/Size of Pads</b>	8 / 9" [23 cm] diameter	
<b>Load Movement</b>	<p>Manual rotation, 180° edgewise, with locking in three positions.  Manual tilt, 90° between upright and flat, with automatic latching in upright position. (Units can be tilted ONLY when the lift bar is locked in the center position, as shown on drawings.)</p> 	
<b>Standard Operating Power</b>	120 volts AC, 50/60 hertz, 3 amps	
<b>Apply / Release Times</b>	3 seconds (approximately)	
<b>Lifter Weight</b>	130 lbs [59 kg]	

## STANDARD FEATURES

### Vacuum Gauge

Features green and red zones to clearly indicate whether vacuum level is sufficient for lifting

### Vacuum Line Filter

Prevents contaminants from damaging the vacuum generating system

### Vacuum Reserve Tank

Reduces attachment time and extends time for supporting loads during a power outage

### Spring-Mounted Vacuum Pads

Automatically adjust to match the angle of load surfaces, easing attachment

### Twist-Lock Electrical Plug

Provides a secure connection to the AC power source, to prevent accidental disconnection

### Two-Action, Blow-Off Release

Uses two separate motions to avoid accidental release, and reverses airflow to quickly release loads without after-stick

## AVAILABLE OPTIONS

### Air (Venturi) Power System (PFHL89AIRS, PFHS89AIRS)

Enables lifter to operate using compressed air supply already available in many production facilities (Specifications may not be as listed. Please contact us for more information.)

### Vacuum Loss Warning Buzzer (93780AM)

Uses advanced logic circuitry to monitor vacuum level and sound an alarm only when insufficient vacuum could be hazardous

### Individual Pad Shutoffs (93011)

Enable lifter to handle various load sizes and shapes by shutting off airflow from specific vacuum pads

### Pad Shutoffs Kit with Individual Gauges

Provides the same advantages as 93011, while adding vacuum gauges to monitor the vacuum level at each vacuum pad

### Voltage Adaptation

Enables lifters to operate using AC voltages best suited to specific uses and geographical areas

### Alternative Vacuum Pads

Adapt lifter to specialized uses, including: 10" [25 cm] diameter, lipped pad (HV11) for handling rough or semiporous loads (Specifications not as listed above. Please contact us for more information.)

### Alternative Pad Compounds

Specially designed for heat resistance, marking resistance, coated surfaces and other purposes

### Custom Pad Frame Sizes and Capacities

Accommodate customers' specific load weight and dimension requirements

## DESIGN STANDARDS

**ASME B30.20 (BTH-1 Design Category "B", Service Class "0"):** Industry standards established by the American Society of Mechanical Engineers (ASME) and published by the American National Standards Institute (ANSI)

Based on product information at time of publication. Environmental conditions can affect product performance and longevity; consult the product instructions on WPG.com or contact a Technical Sales Representative for more information.