



MANUAL TILTER 1200

MODEL: MT810T

These Powr-Grip® lifters are ideal for use on stone and other high-density materials with rough surfaces or irregular shapes.

Stand-Alone Vacuum Package

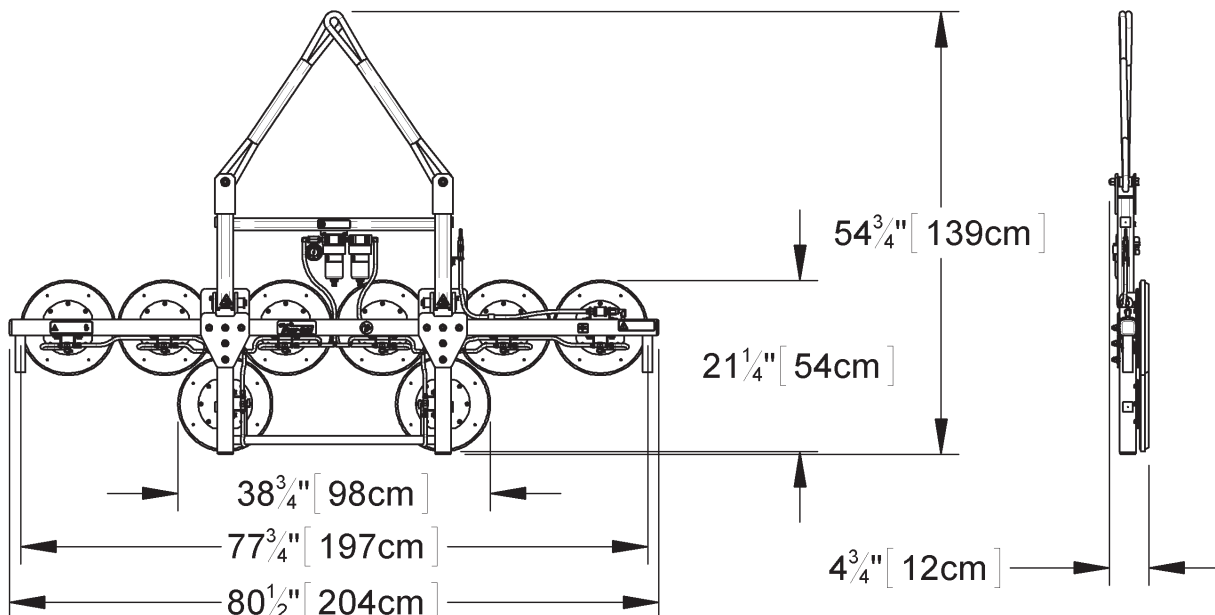
Mounts remotely on a forklift or other hoisting equipment to maintain a narrow profile for handling stone between tightly spaced storage racks.

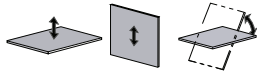
Pad Shutoff Valves

Control airflow at specific pads, allowing operators to handle a variety of load dimensions and avoid holes in loads for the best grip.

Basic Tilt Function

Allows for easy load movement from the vertical rack to the cutting table (and back again) when the pads are attached near the top edge of the load.



Models	MT810T
Maximum Load Capacity	1,200 lbs [545 kg]
Standard Pad Spread	21-1/4" x 77-3/4" [54 cm x 197 cm]
Number/Size of Pads	8 / 10" [25 cm] diameter vacuum pads with replaceable sealing rings
Load Movement	Manual tilt, 90° between upright and flat 
Lifter Weight (without power system)	110 lbs [50 kg]
Available Power Systems (see next page)	DC Power System (MT810TDC) Air (Venturi) Power System (MT810TAIR) AC Power System (MT810TAC)

STANDARD FEATURES

Individual Pad Shutoffs

Enable lifter to handle various load sizes and shapes by shutting off airflow from specific vacuum pads

Spring-Mounted Vacuum Pads

Automatically adjust to match the angle of load surfaces, easing attachment

Nylon Slings

Provide easy-to-use, flexible rigging made from high-quality, abrasion-resistant materials

Vacuum Gauge

Features green and red zones, to clearly indicate whether vacuum level is sufficient for lifting

Vacuum Line Filters

Prevent contaminants from damaging the vacuum generating system

Replacable Sealing Rings

Adhere to textured surfaces and resist abrasion from grit and other particles

AVAILABLE OPTIONS

Pad Shutoffs Kit with Individual Gauges

Provides the same advantages as Individual Pad Shutoffs, while adding vacuum gauges to monitor the vacuum level at each vacuum pad

Vacuum Loss Warning Buzzer (93780AM)

Uses advanced logic circuitry to monitor vacuum level and sound an alarm only when insufficient vacuum could be hazardous

Flat Lift Adapter (95902)

Allows lifter to handle flat loads by locking out the tilt function

Center Spool Lift Bar (58461AM)

Enables lifter use in low-clearance situations by eliminating the need for slings or other rigging

Note: Lifter weight increases by 10 lbs [5 kg]

Center Spool Lift Bar Bolt-On Adapter (95906)

Adapts the standard sling-style lift bar to have the same advantages as the Center Spool Lift Bar

Note: Lifter weight increases by 9 lbs [4 kg]

Vacuum Package Mounting Bar (95904)

Simplifies installation of the remote power system by providing a convenient mounting location without sacrificing the lifter's low profile

Note: Overall weight increases by 15 lbs [7 kg]

Alternative Pad Compounds

Specially designed for heat resistance, marking resistance, coated surfaces and other purposes

Alternative Pad Frame Dimensions and Configurations

Enable lifter to handle additional load sizes and shapes

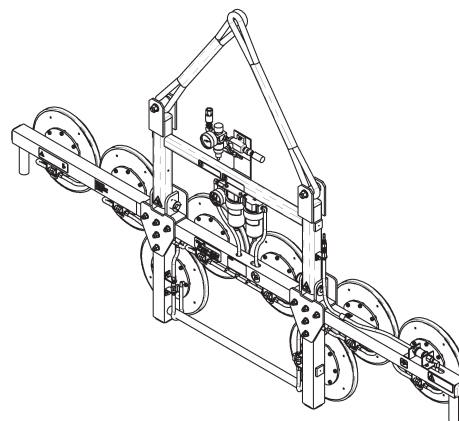
DESIGN STANDARDS

ASME B30.20 (BTH-1 Design Category "B", Service Class "0"): Industry standards established by the American Society of Mechanical Engineers (ASME) and published by the American National Standards Institute (ANSI)

AVAILABLE POWER SYSTEMS

AIR POWER SYSTEMS

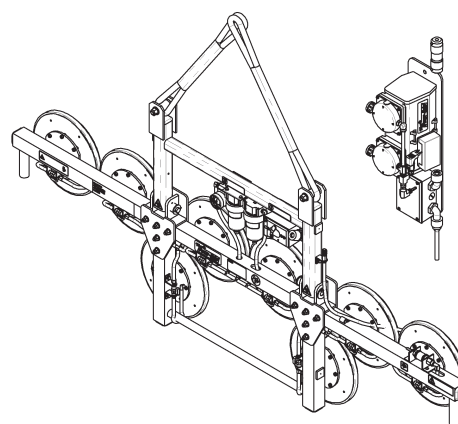
Standard Operating Power	Compressed Air, 5 SCFM [142 liters/min] @ 80 psi [552 kPa]
Vacuum Pump	Single-stage venturi type, 3 SCFM [85 liters/min] nominal airflow
Power System Weight (without lifter)	2 lbs [907 g]



MT810TAIR SHOWN

AC POWER SYSTEMS

Standard Operating Power	120 volts, AC 50/60 hertz, 6 amps (240 volts, AC 50/60 hertz, 3 amps also available)
Vacuum Pump	Wobble Piston, 5 SCFM [142 liters/min] nominal airflow
Power System Weight (without lifter)	40 lbs [19 kg]
Standard Feature	<ul style="list-style-type: none"> • Twist-Lock Electrical Plug: Provides a secure connection to the AC power source, to prevent accidental disconnection



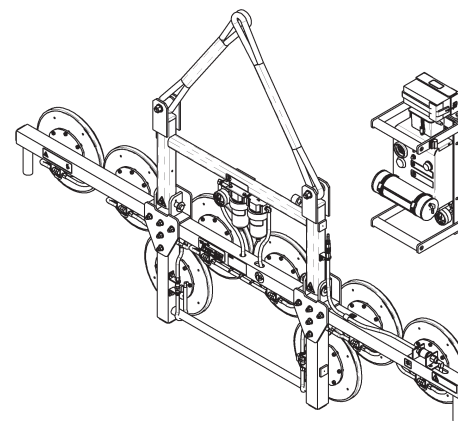
MT810TAC SHOWN

DC POWER SYSTEMS

Standard Operating Power	12 volts DC, 3.5 amps
Vacuum Pump	Diaphragm type, 1 SCFM [28 liters/min] nominal airflow
Power System Weight (without lifter)	30 lbs [14 kg]
Standard Feature	Low-Vacuum Warning Light Uses red light to warn operator when vacuum is not sufficient for lifting

OPTIONAL HIGH-FLOW POWER SYSTEM (Not shown. Standard on MT1010TDC)

Operating Power	12 volts DC, 26 amps
Vacuum Pump	Diaphragm type, 3 SCFM [85 liters/min] nominal airflow
Power System Weight (without lifter)	65 lbs [30 kg]
Standard Feature	<ul style="list-style-type: none"> • Low-Vacuum Warning Light: Uses red light to warn operator when vacuum is not sufficient for lifting



MT810TDC SHOWN

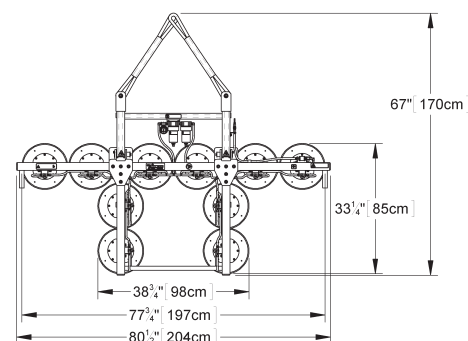
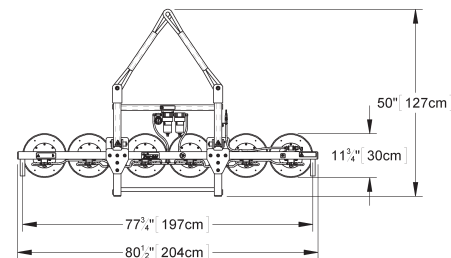
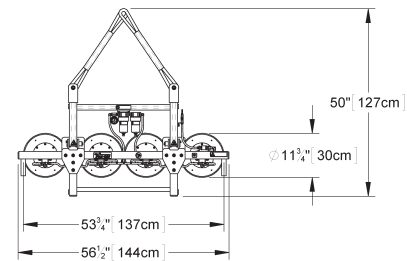
OPTIONAL HIGH-FLOW POWER SYSTEM WITH MOVABLE PENDANT (Not shown)

Operating Power	12 volts DC, 26 amps
Vacuum Pump	Diaphragm type, 3 SCFM [85 liters/min] nominal airflow
Power System Weight (without lifter)	90 lbs [41 kg]
Standard Features	<ul style="list-style-type: none"> • Blow-Off Release: Reverses airflow to quickly separate vacuum pads from loads, without after-stick • Green Lift Light: Provides visual assurance to know when vacuum is sufficient for lifting • Movable Control Pendant: Enables operator to control lifter functions at a safe distance from loads in motion



OPTIONAL FRAME CONFIGURATIONS

MT410T	
Standard Pad Spread	11-3/4" x 53-3/4" [30 cm x 137 cm]
Number / Size of Pads	4 / 10" [25 cm] diameter vacuum pads with replaceable sealing rings
Maximum Load Capacity	600 lbs [270 kg]
Unit Weight (without power system)	85 lbs [39 kg]
MT610T	
Standard Pad Spread	11-3/4" x 77-3/4" [30 cm x 197 cm]
Number / Size of Pads	6 / 10" [25 cm] diameter vacuum pads with replaceable sealing rings
Maximum Load Capacity	900 lbs [410 kg]
Unit Weight (without power system)	100 lbs [46 kg]
MT1010T	
Standard Pad Spread	33-1/4" x 77-3/4" [85 cm x 197 cm]
Number / Size of Pads	10 / 10" [25 cm] diameter vacuum pads with replaceable sealing rings
Maximum Load Capacity	1,500 lbs [680 kg]
Unit Weight (without power system)	125 lbs [57 kg]



POWER SYSTEM MOUNTING SUGGESTIONS

