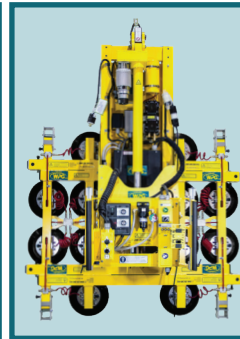
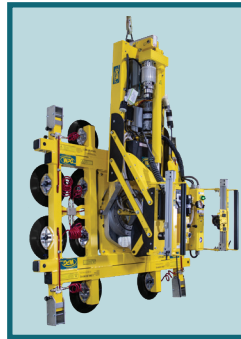
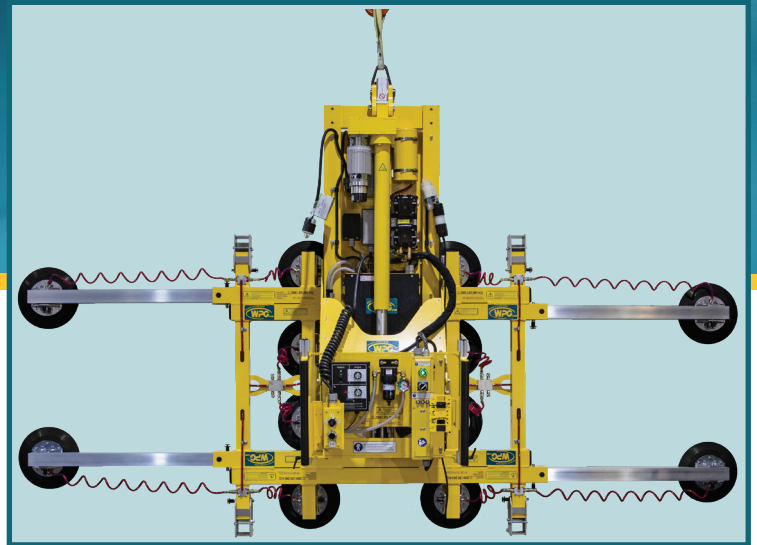




# HIGH-DUTY SERIES MANUAL ROTATOR/ POWER TILTER 2000

MODEL: MRPTHD1211LAC

Redesigned to improve speed, efficiency and flexibility, this MRPT sets a new standard for production lifters!



## Articulating Control Handles

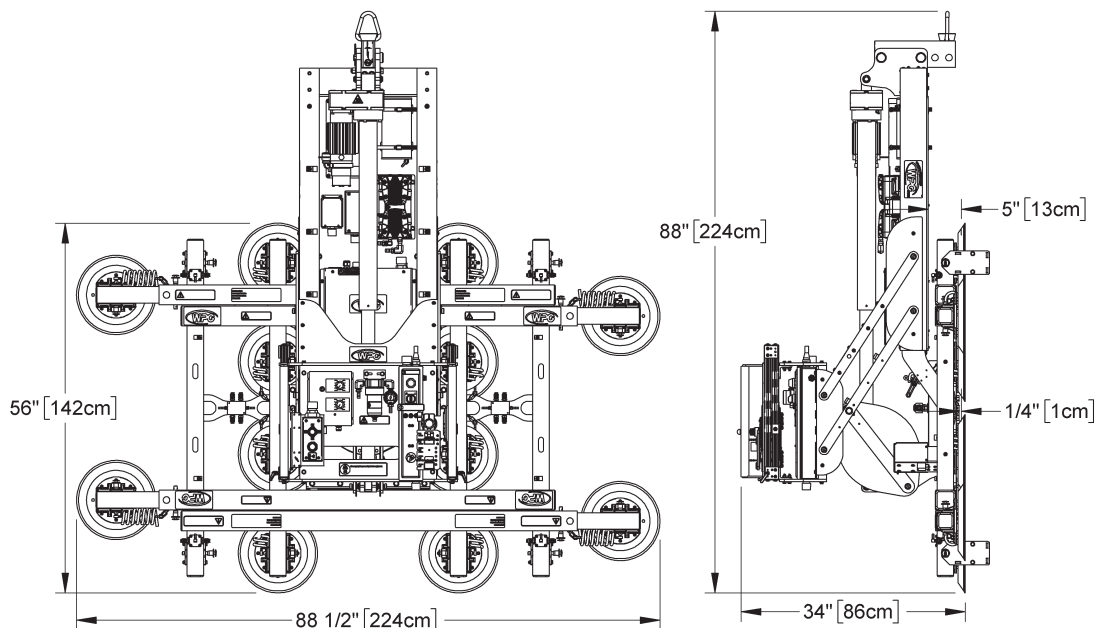
Keep an operator from having to adjust grip during the full range of tilt motion.


## Adjustable Pad Frame

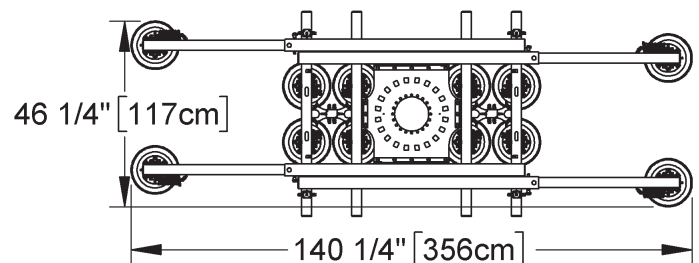
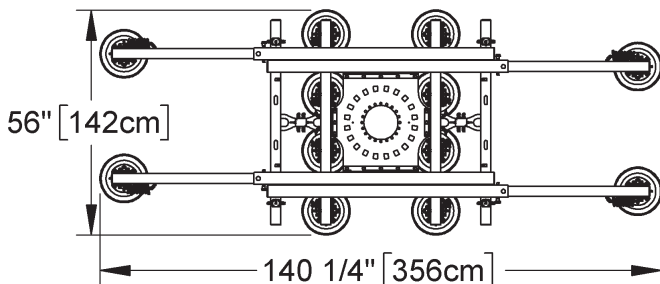
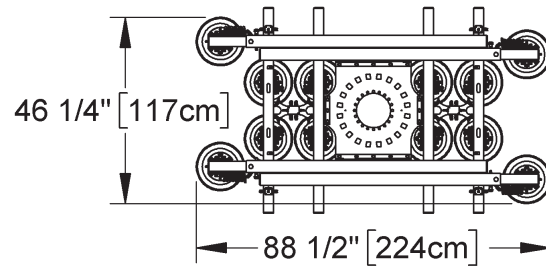
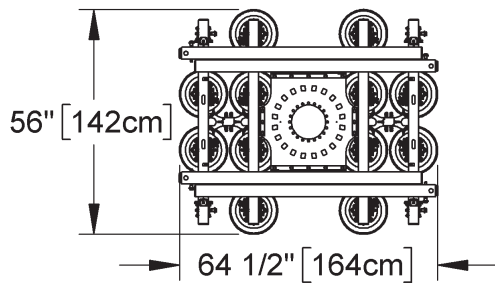
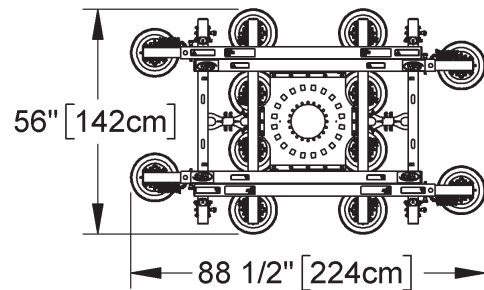
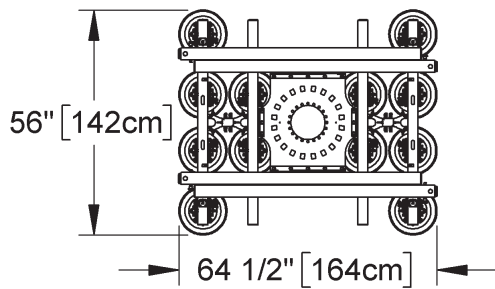
Employs telescoping arms and movable vacuum pads to match a variety of load sizes and shapes.

## Tilt Speed Controller

Features separate dials for setting the actuator's extension and retraction rates independently.



<b>Model</b>	MRPTH1211LAC
<b>Maximum Load Capacity</b>	2,000 lbs [905 kg]
<b>Load Movement</b>	Manual rotation, 360° edgewise, with locking every 18° Power tilt, 90° between upright and flat, with adjustable speed control 
<b>Standard Operating Power</b>	120 volts AC, 60 hertz, 12 amps
<b>Time to Achieve 90° Tilt</b>	20-30 seconds (approximately)
<b>Standard Pad Spread</b>	See drawings below
<b>Attach</b>	8 seconds (approximately)
<b>Release</b>	6 seconds (approximately)
<b>Number/Size of Vacuum Pads</b>	12 / 11" [28 cm] diameter
<b>Lifter Weight</b>	725 lbs [329 kg]



## STANDARD FEATURES

### Adjustable Tilt Speed Controller

Provides precise control over the speed of tilting loads

### Telescoping Pad Arms

Can quickly be extended or retracted, to support many different load dimensions

### Movable Pad Mounts

Allow vacuum pads to be moved without tools, adapting the lifter to various load sizes

### Green Lift Light

Provides visual assurance to know when vacuum is sufficient for lifting

### Movable Control Pendant

Enables operator to control lifter functions at a safe distance from loads in motion

### Vacuum Gauge

Features green and red zones to clearly indicate whether vacuum level is sufficient for lifting

### Vacuum Reserve Tank

Reduces attachment time and extends time for supporting loads during a power outage

### Vacuum Line Filter

Protects the vacuum generating system from contaminants

### Spring-Mounted Vacuum Pads

Automatically adjust to match the angle of load surfaces, easing attachment

### Articulating Control Handles

Move in tandem with tilting loads to give the operator optimal control

### Battery Gauge

Shows energy level in real time, to help determine when charging is needed

### Twist-Lock Electrical Plug

Provides a secure connection to the AC power source, to prevent accidental disconnection

### Blow-Off Release

Reverses airflow to quickly release loads without after-stick

### Adjustable Vertical Handles

Easily slide downward or upward as needed to assist operator control while tilting different size loads

## AVAILABLE OPTIONS

### 12-Volt/DC Vacuum Back-Up System (93756FM)

Employs battery-powered auxiliary pump to automatically maintain vacuum during a power outage

### Vacuum Loss Warning Buzzer (93780BM)

Uses advanced logic circuitry to monitor vacuum level and sound an alarm only when insufficient vacuum could be hazardous

### Voltage Adaptation (95530 & 95530AM)

Enables lifters to operate using AC voltages best suited to specific uses and geographical areas

### Alternative Pad Compounds

Specially designed for heat resistance, marking resistance, coated surfaces and other purposes

### Custom Pad Frame Sizes and Capacities

Accommodate customers' specific load weight and dimension requirements

## DESIGN STANDARDS

**ASME B30.20 (BTH-1 Design Category "B", Service Class "0"):** Industry standards established by the American Society of Mechanical Engineers (ASME) and published by the American National Standards Institute (ANSI)

