



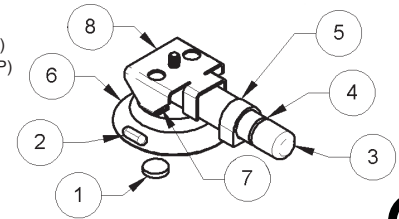
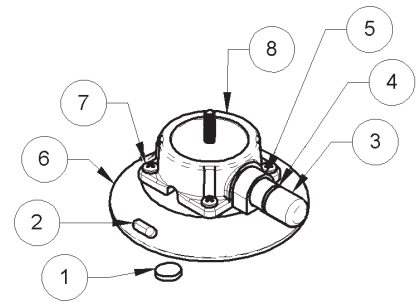
POWR-PRESS VACUUM CUPS

Instructions for Use, Maintenance and Care

Rev. 0.5 / 01-21 Instruction Sheet 32607AZ POWR-PRESS

1. 60024 Air Filter
2. Release Tab
3. Plunger
4. Red Line
5. 90111 Pump
6. 49326T Vacuum Pad, 3" Dia. (TL3)
49345T Vacuum Pad, 4 1/2" Dia. (LJ45)
7. 10020 Screw, 10-32 x 1/2" (for 4 1/2" pad only)
10156 Screw, 10-32 x 1/4" (for 3" pad only)
8. 60119 Accessory Mount, 1/4-20 x 5/8" Stud (for TL3AMB)
60179 Accessory Mount, 1/4-20 x 3/4" Stud (for LJ45AMP)

Not Shown
29306MM Pad Cover, 3"
29308 Pad Cover, 4 1/2"



SPECIFICATIONS

Product Description

Vacuum cups use vacuum to mount loads temporarily or to lift and carry loads, as follows: A manual pump removes air from between the rubber pad and the contact surface; a red line on the pump's plunger serves as a vacuum indicator; a check valve allows the user to repump the cup without removing it from the contact surface; and a release mechanism allows the cup to disengage completely.

PAD	NOMINAL DIA.	MAX. LOAD CAPACITY*
TL3	3" [8 cm]	wpg.com/mccc
LJ45	4 1/2" [11 cm]	40 lbs [18 kg]

*Maximum Load Capacity includes a 3:1 safety factor and requires the following: attachment on clean, smooth, nonporous flat surfaces; a minimum vacuum level of 17 1/2" Hg [-59 kPa]; and a friction coefficient of 1. This rating is based on tests of new vacuum cups attached to the upper, horizontal surface of static objects in ideal conditions. Many factors can reduce the capacity, including: attaching cups on vertical or inclined surfaces to lift a load or to mount a load; dynamic loading (eg, mounting loads on moving vehicles); or attaching loads that apply leverage to the cup. See www.WPG.com for more information.

Contact Surface and Environmental Conditions

Use the cup on clean, relatively smooth, nonporous surfaces, at temperatures from 0° to 120° F [-12° to 49° C] and elevation up to 5,000' [1,524 m]. Moisture or contaminants can reduce the slip resistance of the cup. Contact an authorized dealer or visit www.WPG.com for more information.

OPERATION

To Attach

- 1) Clean the contact surface and, if needed, the face of the vacuum cup (see Cleaning). CAUTION: Test the cup for staining or deformation of surfaces with light colors or soft coatings.
- 2) Position the cup so the red line will be visible if it should appear while the cup is attached.
- 3) Pump the plunger until the cup attaches completely. When the red line is hidden, the cup is ready for use.
- 4) Check the plunger frequently to make sure the cup remains securely attached. If the red line appears, pump the plunger until the red line is hidden again (see WARNINGS).

CAUTION: The user must be able to monitor the red line and repump the plunger whenever the cup is in use. If not, a secondary restraint may be needed to protect mounted equipment.

To Release

- 1) Secure the load.
- 2) Pull a release tab until the cup disengages completely.

CAUTION: Remove the cup when not in use. If the cup remains attached to a hot surface (eg, in direct sunlight) for an extended time, the rubber pad could bond with the surface, resulting in damage to the surface or to the pad when it is removed.

MAINTENANCE

Service

Regularly make sure the vacuum cup's air filter is in place. If not, discontinue use until the filter is replaced. Since aging and wear reduce the capacity of the rubber pad, it should be replaced at least once every 2 years or whenever damage is discovered.

If the cup does not function normally, the cup face may be dirty or damaged, or the pump may require service. First clean the cup face according to the directions to follow. If the problem persists, contact an authorized dealer or visit www.WPG.com for assistance.

Cleaning

- 1) Remove the air filter from the cup face.
- 2) Use a clean sponge or lint-free cloth to apply soapy water or another mild cleanser to the cup face; see WARNINGS and www.WPG.com for more information. CAUTION: To prevent liquid from contaminating the pump, hold the cup face-down or cover the suction hole in the filter recess.
- 3) Wipe all residue from the cup face.
- 4) Allow the cup to dry and reinstall the air filter.

Storage

Store in a clean, dry location out of direct sunlight. Protect the cup face from damage using the pad cover (when supplied) or another appropriate means.

WARNINGS

Failure to observe WARNINGS could damage the vacuum cup or the load, or cause injury to the user.

- Do not use the cup to support loads that exceed the Maximum Load Capacity or the effective capacity (see SPECIFICATIONS).
- Do not use the cup to support a person.
- Do not use the cup to support loads which could injure people if the cup disengages unexpectedly.
- Do not place the cup face against surfaces which could damage the sealing edge of the rubber pad.
- Avoid conditions that could cause the cup to slip or to disengage prematurely, such as: contaminants, cuts or scratches in the cup face or contact surface; applying the cup to porous materials; or applying pressure against the cup edge.
- Do not use the cup when the red line is visible. If the red line reappears frequently, discontinue use and see Service.
- Do not allow anything to interfere with free movement of the plunger while the cup is attached.
- Do not touch any release tab while using the cup.
- Do not leave the cup in use and unattended.
- Do not use harsh chemicals (such as solvents or gasoline) or unauthorized rubber cleaners and conditioners to clean the cup.

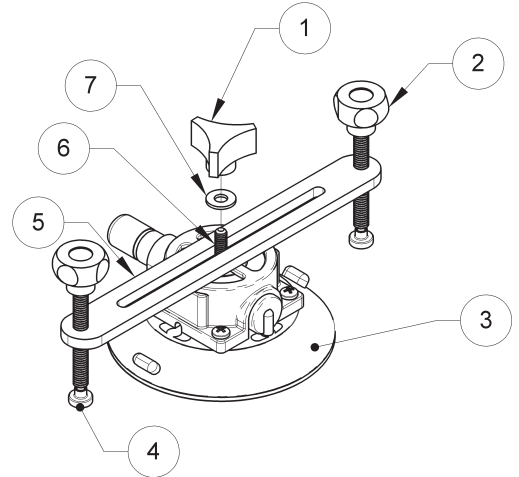


POWR-PRESS ACCESSORY

Instructions for Use,
Maintenance and Care

Limited Warranty

1. 60082 Adjustment Knob
2. 15735AZ Pressure Screw
3. Vacuum Cup, 3" Dia. (TL3AMB)
Vacuum Cup, 4 1/2" Dia. (LJ45AMP)
4. 15733 Pressure Foot
5. 56575 Hold-Down Bar
6. Threaded Stud
7. 12770 Flat Washer



PRODUCT DESCRIPTION

The Powr-Press is a fully adjustable, hands-free device designed to hold down glue-on windshield moldings, automotive door moldings, body emblems and much more: The Powr-Press applies pressure to these parts until the glue has adequate time to dry, and eliminates the need to hold the part in place manually or using masking tape.

ASSEMBLY

The Powr-Press is designed to work with all Powr-Grip 3" [8 cm] and 4-1/2" [11 cm] mounting cups equipped with 1/4-20 stud, provided that the exterior stud length is 1/2" [13 mm] or longer. Attach the Powr-Press accessory to the mounting cup as shown in the illustration.

APPLICATION

- 1) Attach the vacuum cup to any clean, nonporous surface near the glued part (see OPERATION).
- 2) Loosen the adjustment knob and slide the hold-down bar into position, so as to place one pressure foot over the part. Then tighten the adjustment knob.
- 3) Turn down the pressure screw on the opposite end of the hold-down bar until the pressure foot touches the surface.
- 4) Turn down the pressure screw over the part so that the pressure foot applies adequate force to hold the part in place while the glue is drying. CAUTION: Do not use excessive force when applying pressure, because the pressure foot could damage the part and/or the surface under the foot at the opposite end of the hold-down bar.
- 5) Once the glue has dried sufficiently, back off the pressure screws. Then remove the vacuum cup from the surface and store it as directed (see OPERATION).

LIMITED WARRANTY

Wood's Powr-Grip vacuum cups are carefully constructed, thoroughly inspected at various stages of production, and individually tested. They are warranted to be free from defects in workmanship and materials for one year from the date of purchase. If a problem develops during the warranty period, return the complete product as directed below. If inspection shows that the problem is due to defective workmanship or materials, the product will be repaired or replaced without charge.

WARRANTY DOES NOT APPLY WHEN:

Rubber portions have been cut or scratched during use.
Repairs are required due to abnormal wear and tear.
The product has been abused, misused or neglected.
Alterations have been made to the product.

A problem not covered under warranty will be corrected automatically, unless the customer includes a written request for notification of costs prior to repair. Otherwise the customer assumes all responsibility for repair costs and agrees to receive the repaired product on a C.O.D. basis.

TO OBTAIN WARRANTY SERVICE

For purchases in **North America:**

- Please include your name, address and phone number;
- Indicate WARRANTY RETURN;
- Ship product—prepaid—**DIRECTLY TO MANUFACTURER** at:
Wood's Powr-Grip Co., Inc.
908 West Main
Laurel, MT 59044 U.S.A.

For purchases in **all other localities:**

- Return product to point of purchase.

Please fill out and **KEEP FOR YOUR RECORDS!**
This information is important for claiming a Warranty service.

Date of Purchase:

Model #:

Purchased From:

Stock#: