

KEEP FOR FUTURE REFERENCE

# INSTALLATION INSTRUCTIONS



908 W. Main • P.O. Box 368  
Laurel, MT USA 59044  
800-548-7341 (phone)  
406-628-8231 (phone)  
406-628-8354 (fax)  
[www.WPG.com](http://www.WPG.com)

 **INTENDED FOR USE BY SKILLED  
TECHNICAL PROFESSIONALS • READ  
AND UNDERSTAND BEFORE INSTALLING**



## 2.5 SCFM 120 V AC VACUUM PUMP CONVERSION KIT FOR MR4-AC

Stock numbers: 93034 (shown left), 93034CM (shown right)



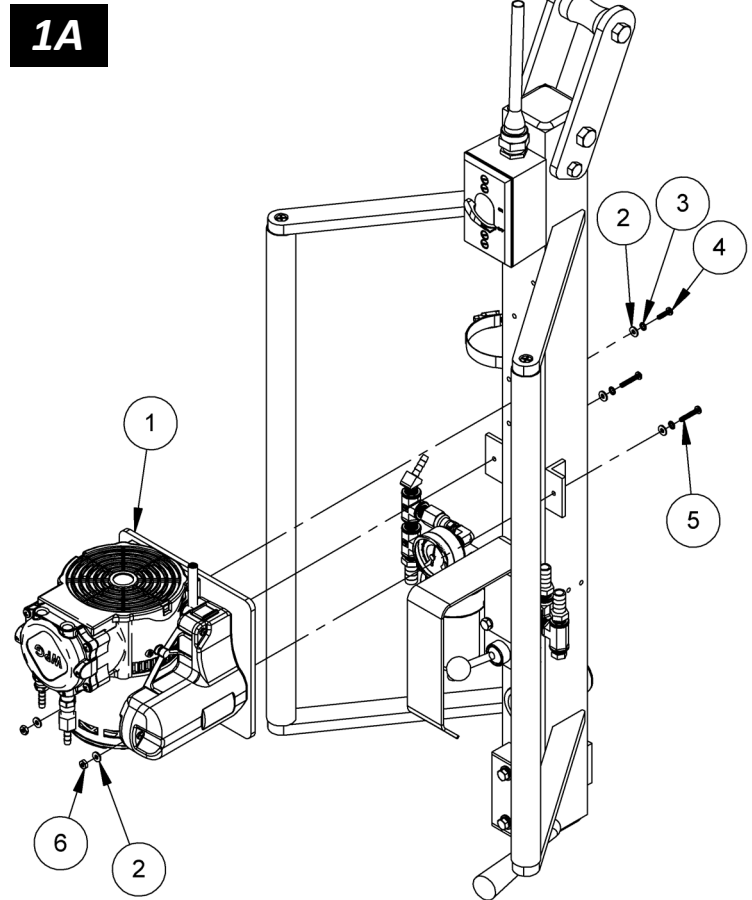
# INSTALLATION

Note: For Power Source requirements, see the pump's serial number label to view specific AC voltage, frequency and amperage.

Note: The weight of the conversion kit is 15 lbs [7 kg]. After the kit is installed, make sure to adjust the Lifter Weight accordingly when determining the hoisting equipment capacity.

## To INSTALL KIT #93034

- 1) Place the lifter's power switch in the "off" position (○).
- 2) Disconnect the lifter's power cable from the power source.
- 3) Disconnect the existing vacuum pump's wiring from the lifter's power switch.
- 4) Disconnect the existing pump's hoses.
- 5) Remove the existing pump assembly.
- 6) Mount the new pump assembly (item 1 in fig. 1A) as shown, using supplied hardware (items 2-6).
- 7) Connect the new hoses (see "To CONNECT THE VACUUM HOSES").
- 8) Wire the new pump according to the diagram provided (see *ENGINEERING DRAWINGS* in this booklet).



**! Securely position wiring to avoid interference or damage during lifter operation.**

- 9) Reverse steps 1-2. Then perform the Vacuum Test (see *INSPECTIONS AND TESTS: TESTING* in the lifter's *OPERATING INSTRUCTIONS*).

- 1 VACUUM PUMP ASSEMBLY
- 2 #8 FLAT WASHER
- 3 #8 LOCK WASHER
- 4 8-32 X 5/8" PAN HEAD SCREW
- 5 8-32 X 1" HEX BOLT
- 6 8-32 HEX NUT

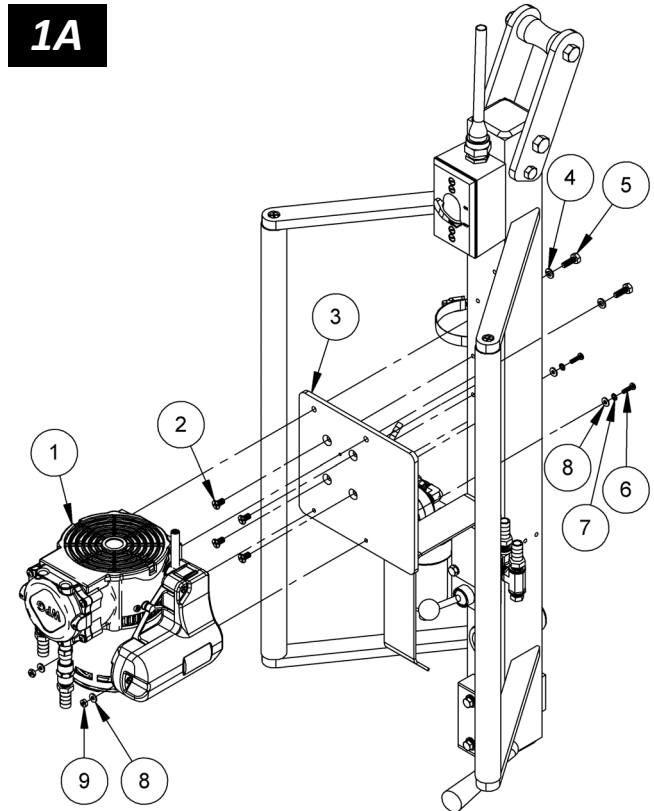
# INSTALLATION

Note: For Power Source requirements, see the pump's serial number label to view specific AC voltage, frequency and amperage.

Note: The weight of the conversion kit is 15 lbs [7 kg]. After the kit is installed, make sure to adjust the Lifter Weight accordingly when determining the hoisting equipment capacity.

## To INSTALL KIT #93034CM

- 1) Place the lifter's power switch in the "off" position (○).
- 2) Disconnect the lifter's power cable from the power source.
- 3) Disconnect the existing vacuum pump's wiring from the lifter's power switch.
- 4) Disconnect the existing pump's hoses.
- 5) Remove the existing pump assembly.
- 6) Attach the new pump mounting plate (item 3 in fig. 1A) to the lifter's lift bar as shown, using existing hardware (item 2).
- 7) Mount the new pump assembly (item 1) onto the plate as shown, using supplied hardware (items 4-9).
- 8) Connect the new hoses (see "To CONNECT THE VACUUM HOSES").
- 9) Wire the new pump according to the diagram provided (see *ENGINEERING DRAWINGS* in this booklet).



- 1 VACUUM PUMP ASSEMBLY
- 2 1/4-20 X 1/2" FLAT HEAD SCREW
- 3 PUMP MOUNTING PLATE
- 4 1/4" LOCK WASHER
- 5 1/4-20 X 3/4" HEX BOLT
- 6 8-32 X 5/8" PAN HEAD SCREW
- 7 #8 LOCK WASHER
- 8 #8 FLAT WASHER
- 9 8-32 HEX NUT



**Securely position wiring to avoid interference or damage during lifter operation.**

- 10) Reverse steps 1-2. Then perform the Vacuum Test (see *INSPECTIONS AND TESTS: TESTING* in the lifter's *OPERATING INSTRUCTIONS*).

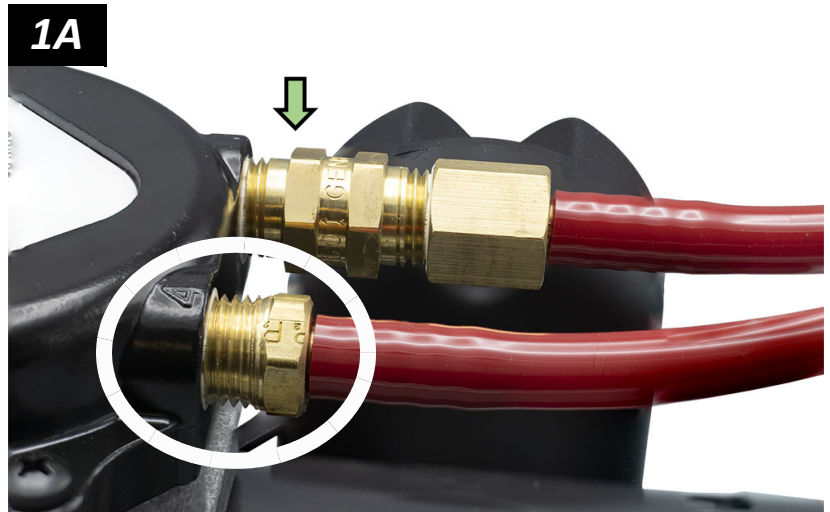
# INSTALLATION

## TO CONNECT THE VACUUM HOSES

Note: The conversion kit ships with its vacuum hoses attached and secured at the vacuum pump.

Note: To view a WPG video showing how to connect vacuum hoses, go to <https://vimeo.com/328475914>.

- 1) Connect the hose leading from the vacuum port equipped with a check valve (arrow in fig. 1A) to the lifter's control valve vacuum port.
- 2) Connect the hose leading from the exhaust port (circled in fig. 1A) to the lifter's control valve exhaust port.



# REPLACEMENT PARTS

Stock No.	Description	Qty.
66143	Vacuum Pump – Wobble Piston Type – 2.5 SCFM – 120 V AC	1
65444	Vacuum Hose – 1/2" ID x 0.748" OD – Clear (for 93034CM)	*
65440	Vacuum Hose – 0.245" ID x 3/8" OD – Red (for 93034)	*

\* Length as required. sold by the inch (approx 2.5 cm).

**SERVICE ONLY WITH IDENTICAL REPLACEMENT PARTS,  
AVAILABLE AT [WPG.COM](http://WPG.COM) OR THROUGH AN AUTHORIZED WPG DEALER**

# WARRANTY



Note: Read the [WARRANTY RETURN FORM](#) at [wpg.com](#) for important details about the warranty.

Wood's Powr-Grip® (WPG) products are warranted to be free from defects in workmanship and materials for 1 year from the date of purchase.

If a problem develops during the warranty period, follow the instructions below to obtain warranty service. If inspection shows that the product has a defect, WPG will repair or replace the product without charge.



## TO OBTAIN WARRANTY SERVICE OR REPAIR SERVICE

**For customers in the U.S. and Canada:** Go to the [EXCHANGES, REPAIRS, & WARRANTIES](#) page at [wpg.com](#) and click the applicable link. Alternatively, you may contact the WPG Technical Service Department (see contact information at right).

**For customers in all other localities:** Contact the WPG Technical Service Department (see contact information at right) or your dealer for assistance.

### Contact information

**Address:**

Wood's Powr-Grip Co., Inc.  
908 West Main St.  
Laurel, MT 59044 USA

**Email:**

[contactus@wpg.com](mailto:contactus@wpg.com)

**Phone:**

800-548-7341 or 406-628-8231

**Fax:**

406-628-8354

KEEP FOR FUTURE REFERENCE

# ENGINEERING DRAWINGS



908 W. Main • P.O. Box 368  
Laurel, MT USA 59044  
800-548-7341 (phone) • 406-628-8231 (phone)  
406-628-8354 (fax) • [www.WPG.com](http://www.WPG.com)

 **INTENDED FOR USE BY SKILLED TECHNICAL  
PROFESSIONALS • READ AND UNDERSTAND  
BEFORE ROUTING, WIRING AND/OR ASSEMBLING**

**2.5 SCFM 120 V AC VACUUM PUMP  
CONVERSION KIT FOR MR4-AC**

Stock numbers: 93034, 93034CM

WIRE LEGEND: CONTROLLED BY  
WIRING SYMBOLS DRAWING  
EXCEPT AS NOTED AND BELOW.

LINE STYLES AND WIDTHS FOR  
WIRE UNLESS NOTED OTHERWISE.

.....	.....	.....	16AWG
N/A	N/A	N/A	
.....	14AWG	N/A	N/A
N/A			

PRODUCT MANAGER:	DATE:
KELLY K.	12/01/2020

CHECKED:	
<i>CR</i>	<i>12-08-20</i>

APPROVED:	
<i>Chr</i>	<i>12-8-20</i>

TYPE:  
**STANDARD**

FILE DIRECTORY: 855  
FILE [SHEET]: 855A-W01 [A-W01]

THIS DRAWING IS THE PROPERTY OF **WOOD'S POWR-GRIP CO., INC.**  
IT IS LOANED WITH THE UNDERSTANDING THAT NEITHER IT NOR ANY  
INFORMATION CONTAINED THEREIN WILL BE COPIED, PUBLISHED OR  
TRANSMITTED TO OTHERS WITHOUT EXPRESS WRITTEN PERMISSION.

**WPG** LAUREL, MONTANA U.S.A.

1500LB POWER-FILTER  
AC POWER SYSTEM  
5SCFM 120/240VAC WOBBLE-PISTON VAC PMP WIRING SCHEMATIC  
D855A-W01 [A-W01]

SIZE:	SCALE:	REVISION:	ECN NUMBER:	ECN DATE:	ECN BY:	EST. WEIGHT:
A	NONE	00.A	4960	12/01/2020	CCH	N/A

