

**KEEP FOR FUTURE REFERENCE**



*P.O. Box 368 – 908 West Main  
Laurel, MT USA 59044  
phone 800-548-7341  
phone 406-628-8231  
fax 406-628-8354*

# INSTRUCTIONS

International Version

STOCK NUMBERS: SEE SPECIFICATIONS

INTERCHANGEABLE PAD FRAME



***READ ALL INSTRUCTIONS AND WARNINGS  
BEFORE USING THIS PRODUCT***



**DESIGNED FOR THE MATERIALS HANDLING PROFESSIONAL**



# SPECIFICATIONS

**Description:** The Interchangeable Pad Frame option enables an MRPT8 vacuum lifter to handle loads with different dimensions from those suitable for the standard pad frame. In addition to different dimensions, Interchangeable Pad Frames may also feature Telescoping Pad Arms, Removable Pad Arms and/or Individual Pad Shutoffs, depending on the pad frame selected.

**Vacuum Pads:** Eight 9" [23 cm] nominal diameter (Model VPFS9), standard rubber, spring-mounted (¼" [7 mm] travel), with #60 filter screen

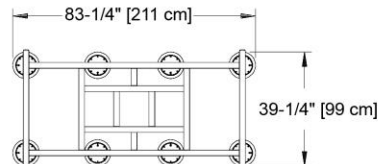
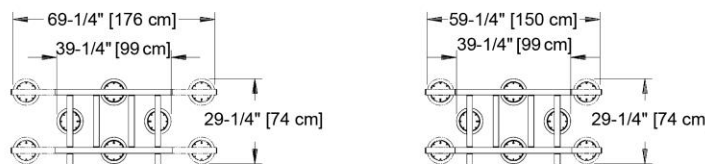
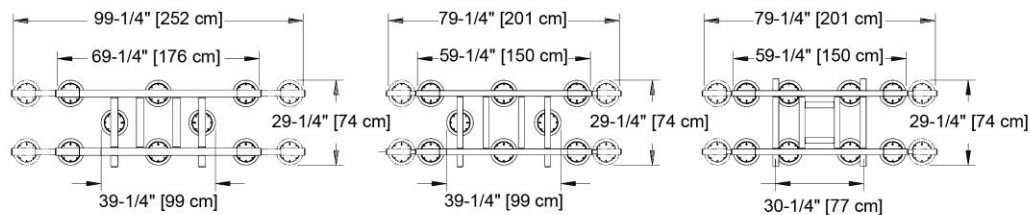
**Load Capacity:** (rated at 16" Hg [-54 kPa] on clean, smooth, nonporous flat surfaces<sup>1</sup>)

**Per-Pad:** 125 lbs [57 kg]  
**Maximum:** 1000 lbs [455 kg]

<b>Stock Number:</b>	95536	95537	95538	95539	95540	95541
----------------------	-------	-------	-------	-------	-------	-------

<b>Pad Spread:</b>	— (to outer edges) —					
<b>Maximum:</b>	29¼" x 99¼" 74 x 252 cm	29¼" x 79¼" 74 x 201 cm	29¼" x 79¼" 74 x 201 cm	29¼" x 59¼" 74 x 150 cm	39¼" x 83¼" 99 x 211 cm	29¼" x 69¼" 74 x 176 cm
<b>Minimum:</b>	29¼" x 69¼" 74 x 176 cm	29¼" x 59¼" 74 x 150 cm	29¼" x 30¼" 74 x 77 cm	29¼" x 39¼" 74 x 99 cm	39¼" x 83¼" 99 x 211 cm	29¼" x 39¼" 74 x 99 cm

<b>Lifter Weight:<sup>2</sup></b>	330 lbs [150 kg]	300 lbs [136 kg]	310 lbs [141 kg]	296 lbs [135 kg]	316 lbs [144 kg]	295 lbs [135 kg]
-----------------------------------	------------------	------------------	------------------	------------------	------------------	------------------



<sup>1</sup> Load Capacity is based on a friction coefficient of 1; see MAINTENANCE: VACUUM PAD MAINTENANCE: Friction Coefficient lifter's instruction manual for additional information.

<sup>2</sup> Based on Standard MRPT89AC Lifter without other options; see serial label for actual weight of your lifter.

# WARNINGS

---



Powr-Grip is pleased to offer the most reliable materials handling products available. Despite the high degree of security provided by the Interchangeable Pad Frame, certain precautions must be observed to protect the lifter operator and others.



**Never** use an Interchangeable Pad Frame that is damaged, malfunctioning, or missing parts.

**Always** install the Interchangeable Pad Frame as directed in ASSEMBLY.

**Never** exceed the Maximum Load Capacity listed for the vacuum lifter (see SPECIFICATIONS in lifter's instruction manual).

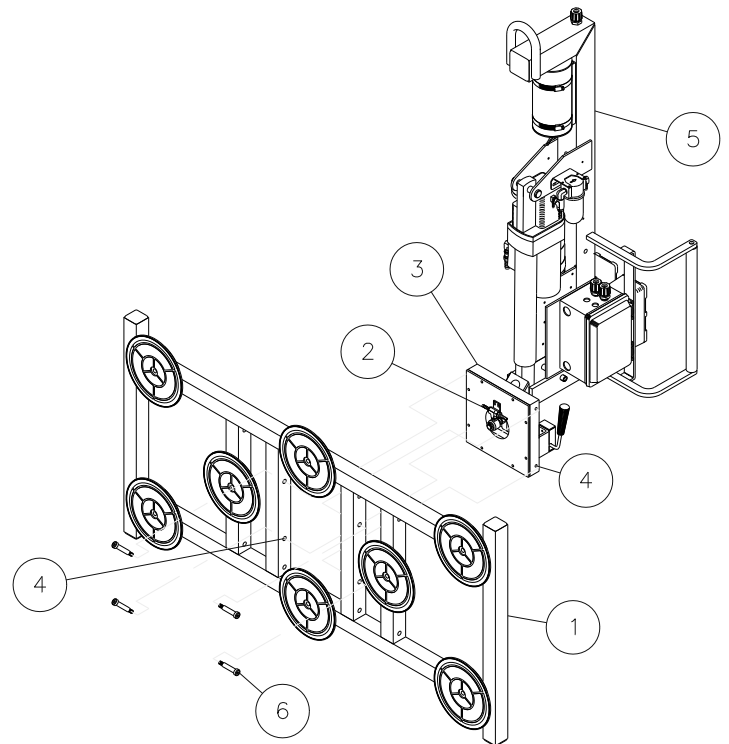
**Always** remember that modifications to the Interchangeable Pad Frame may compromise its safety. Wood's Powr-Grip cannot be responsible for the safety of an Adaptable Length Lift Bar that has been modified by the customer. For consultation, contact Wood's Powr-Grip (see LIMITED WARRANTY).

# ASSEMBLY

## REMOVAL OF EXISTING PAD FRAME

- 1) Suspend the vacuum lifter from a hoist and support the pad frame independently, to keep it from falling when the frame mounting bolts are removed.
- 2) Carefully disconnect the vacuum hose from each of the 2 barbs on the rotation fittings assembly.
- 3) Use a hex key to remove the 4 frame mounting bolts that attach the pad frame to the rotation housing. The bolts are located in 4 frame mounting holes on the innermost tubes of the pad frame.
- 4) Use the hoist to move the lift bar assembly up and away from the pad frame. Then place the pad frame in an appropriate storage location.

Note: Built-in parking feet can be used to support the pad frame when not in use: Make sure the pad frame is oriented vertically with the parking feet at the bottom, and lean it securely against an appropriate support. When storing the pad frame, use the covers supplied to keep the vacuum pads clean.



- |                              |                        |
|------------------------------|------------------------|
| 1 PAD FRAME                  | 4 FRAME MOUNTING HOLES |
| 2 ROTATION FITTINGS ASSEMBLY | 5 LIFT BAR ASSEMBLY    |
| 3 ROTATION HOUSING           | 6 FRAME MOUNTING BOLTS |

**CAUTION: Do not set the pad frame against any surfaces which could soil or damage the vacuum pads.**

# INSTALLATION OF OPTIONAL PAD FRAME

- 1) Support the pad frame as described in the preceding Removal directions, and align the 4 frame mounting holes in the rotation housing with those in the innermost tubes of the pad frame: First rotate the rotation housing so that its mounting holes will match those in the pad frame. Then tilt the rotation housing to match the orientation of the pad frame. Finally, use the hoist to move the lift bar assembly into position so that the mounting holes align.
- 2) Install the 4 frame mounting bolts one by one in the frame mounting holes: First apply a removable thread-locking adhesive to the threads of a mounting bolt. Then use a hex key to tighten the bolt until its shoulder seats securely against the rotation housing. Repeat for all bolts.

Note: Make sure the shoulder of each frame mounting bolt is contacting the rotation housing, **not** the inside wall of the pad frame tube. When a bolt is installed correctly, the gap between the bolt head and the pad frame should measure less than 1/8" [3 mm].

- 3) Attach the vacuum hose to the 2 barbs of the rotation fittings assembly: Use a small amount of glycerin on the inside of the hose to ease installation. Push the free end of each hose over the corresponding barb. Make certain that both hoses are undamaged and connected securely.
- 4) Perform Operational Tests of the pad frame and vacuum system (see MAINTENANCE to follow).

# OPERATION

---

If the Interchangeable Pad Frame is equipped with Telescoping Pad Arms, Removable Pad Arms or Individual Pad Shutoffs, consult the appropriate instructions (provided) prior to placing the vacuum lifter in service. When applicable, adjust the Interchangeable Pad Frame to optimize the function of the vacuum lifter as directed in the INTENDED USE section of the lifter's instruction manual. Be sure to note any changes to the pad frame which may affect the lifter's Load Capacity or Pad Spread.

After the Interchangeable Pad Frame has been installed and adjusted correctly, operate the lifter as directed in the OPERATION section of the lifter's instruction manual.

# MAINTENANCE

---

When performing inspections and tests as directed in the lifter's instruction manual, be sure to include all parts of the currently installed Interchangeable Pad Frame whenever applicable.



# REPLACEMENT PARTS LIST

---

<b>Stock No.</b>	<b>Description</b>	<b>Qty.</b>
93015	Quick Connector Assembly	1*
93011	Pad Shutoff Assembly	4*
65441	Vacuum Hose – 1/4" [6.3 mm] ID x 48" [122 cm] length – Coiled	4*
65440	Vacuum Hose – 1/4" [6.3 mm] ID	*
65010	Pad Spring – Coil Type	8
49506TA	Vacuum Pad – Model VPFS9 / 9" [23 cm] Diameter	8
53132	Hose Fitting – Tee – 5/32" [4.0 mm] ID	*
53128	Pad Fitting – Tee – 5/32" [4.0 mm] ID	*
53122	Pad Fitting – Elbow – 5/32" [4.0 mm] ID	*
49150	End Plug – 2-1/2" x 2-1/2" x 1/4" [63.5 mm x 63.5 mm x 6.4 mm] Tubing Size	4*
49122	End Plug – 2" x 2" x 1/4" [50.8 mm x 50.8 mm x 6.4 mm] Tubing Size	*
29353	Pad Cover	8
15632	Pad Filter Screen – Small	8
10916	Shoulder Bolt – Socket Head – 1/2" x 2-1/2" x 3/8-16 Thread (for mounting pad frame)	4*
10914	Shoulder Bolt – Socket Head – 1/2" x 2" x 3/8-16 Thread (for mounting pad frame)	4*
10900	Shoulder Bolt – Socket Head – 5/16" x 1/2" x 1/4-20 Thread (for mounting pads)	48

\* Quantity and/or length as required/if applicable.

***SERVICE ONLY WITH IDENTICAL REPLACEMENT PARTS  
SUPPLIED BY OR APPROVED BY WOOD'S POWR-GRIP CO., INC.***

# LIMITED WARRANTY

---

Powr-Grip products are carefully constructed, thoroughly inspected at various stages of production, and individually tested. They are warranted to be free from defects in workmanship and materials for a period of one year from the date of purchase.

If a problem develops during the warranty period, follow the instructions hereafter to obtain warranty service. If inspection shows that the problem is due to defective workmanship or materials, Powr-Grip will repair the product without charge.

## ***WARRANTY DOES NOT APPLY WHEN:***

Modifications have been made to the product after leaving the factory.

Rubber portions have been cut or scratched during use.

Repairs are required due to abnormal wear and tear.

The product has been damaged, misused, or neglected.

If a problem is not covered under warranty, Powr-Grip will notify the customer of costs prior to repair. If the customer agrees to pay all repair costs and to receive the repaired product on a C.O.D. basis, Powr-Grip then will proceed with repairs.

## **TO OBTAIN REPAIRS OR WARRANTY SERVICE**

For purchases in *North America*:

Contact the Technical Service Department at Wood's Powr-Grip Co. When factory service is required, ship the complete product--prepaid--along with your name, address and phone number to the street address hereafter.

For purchases in *all other localities*:

Contact your dealer or the Technical Service Department at Wood's Powr-Grip Co. for assistance.

Wood's Powr-Grip Co., Inc.  
908 West Main St. / P.O. Box 368  
Laurel, MT USA 59044

phone 800-548-7341

phone 406-628-8231

fax 406-628-83