

KEEP FOR FUTURE REFERENCE



*P.O. Box 368 – 908 West Main
Laurel, MT USA 59044
phone 800-548-7341
phone 406-628-8231
fax 406-628-8354*

INSTRUCTIONS

International Version

SPECIAL ORDER

PARKING STANDS / CONTROL HANDLES



***READ ALL INSTRUCTIONS AND WARNINGS
BEFORE USING THIS PRODUCT***



DESIGNED FOR THE MATERIALS HANDLING PROFESSIONAL

SPECIFICATIONS

Stock Number: (Special Order)

Description: This option provides ergonomic control handles during lifter operation, or sturdy parking stands when the lifter is not in use.

Weight: 13 lbs [6 kg]

Note: Make sure to add the weight of all options to the Lifter Weight when you are selecting appropriate hoisting equipment (see ASSEMBLY in main Instructions).

WARNINGS



Powr-Grip is pleased to offer the most reliable vacuum products available. Despite the high degree of security provided by the Control Handle, certain precautions must be observed to protect the operator and others.

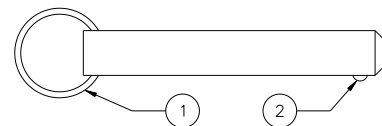


Never use Control Handles that are damaged, malfunctioning, or missing parts.

Always remember that modifications to Control Handles may compromise their safety. Wood's Powr-Grip cannot be responsible for the safety of Control Handles that have been modified by the customer. For consultation, contact Wood's Powr-Grip (see LIMITED WARRANTY).

ASSEMBLY

Assemble the vacuum lifter as directed in the ASSEMBLY section of the main Instructions. In addition, move the control handles at the ends of the pad frame to the position desired for managing the load, as follows: Use the pull ring to remove the cotterless hitch pin from one handle pivot, and pivot the handle into the desired position (either straight out or straight up from the pad frame). When the holes for the cotterless hitch pin are aligned, push the pin through the holes until the retaining ball emerges on the far side of the pivot. Repeat this procedure for the second handle.



COTTERLESS HITCH PIN

- 1 PULL RING
- 2 RETAINING BALL

OPERATION

Operate the vacuum lifter as directed in the OPERATION section of the main Instructions. In addition, the control handles can be used as parking stands when an unloaded lifter is not suspended from a crane: Secure the handles in position, pointing straight down from the pad frame (see ASSEMBLY). Use the hoisting equipment to gently lower the lifter until the control handles support its entire weight; then detach the hoisting equipment hook from the lift point.

~~~~~  
**CE** In accordance with CE Standard EN 13155, the lifter is designed to rest on relatively horizontal surfaces without tipping over. To store the lifter in this way, set the lifter down on the control handles as described in the preceding section.  
~~~~~

MAINTENANCE

INSPECTIONS AND TESTING

When performing inspections and tests of the lifter as directed in the MAINTENANCE section of the main Instructions, be sure to include each Control Handle whenever applicable.

REPLACEMENT PARTS LIST

Stock No.	Description	Qty.
65300	Handle Grip Foam	1
49110	End Plug - 2" x 2" x 3/16" [50.8 mm x 50.8 mm x 4.8 mm] Tubing Size	2
13520	Cotterless Hitch Pin - 3/8" x 3" [10 mm x 76 mm]	2

***SERVICE ONLY WITH IDENTICAL REPLACEMENT PARTS,
AVAILABLE AT WPG.COM OR THROUGH AN AUTHORIZED WPG DEALER***

LIMITED WARRANTY

Powr-Grip products are carefully constructed, thoroughly inspected at various stages of production, and individually tested. They are warranted to be free from defects in workmanship and materials for a period of one year from the date of purchase.

If a problem develops during the warranty period, follow the instructions hereafter to obtain warranty service. If inspection shows that the problem is due to defective workmanship or materials, Powr-Grip will repair the product without charge.

WARRANTY DOES NOT APPLY WHEN:

Modifications have been made to the product after leaving the factory.

Rubber portions have been cut or scratched during use.

Repairs are required due to abnormal wear and tear.

The product has been damaged, misused, or neglected.

If a problem is not covered under warranty, Powr-Grip will notify the customer of costs prior to repair. If the customer agrees to pay all repair costs and to receive the repaired product on a C.O.D. basis, Powr-Grip then will proceed with repairs.

TO OBTAIN REPAIRS OR WARRANTY SERVICE

For purchases in *North America*:

Contact the Technical Service Department at Wood's Powr-Grip Co. When factory service is required, ship the complete product--prepaid--along with your name, address and phone number to the street address hereafter.

For purchases in *all other localities*:

Contact your dealer or the Technical Service Department at Wood's Powr-Grip Co. for assistance.

Wood's Powr-Grip Co., Inc.
908 West Main St. / P.O. Box 368
Laurel, MT USA 59044

phone 800-548-7341

phone 406-628-8231

fax 406-628-83