

**KEEP FOR FUTURE REFERENCE**

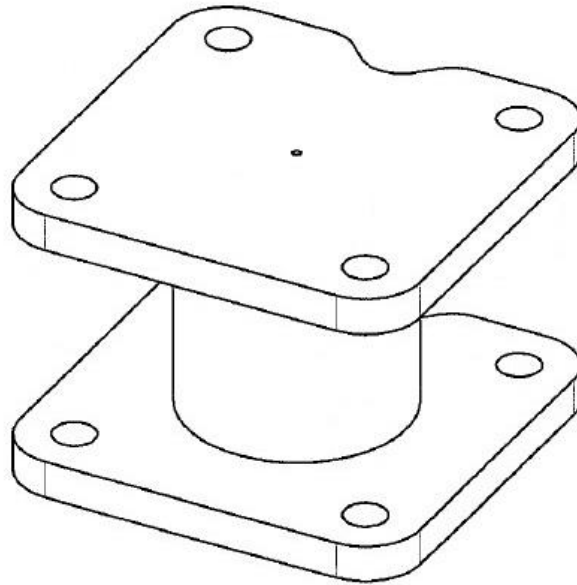


*P.O. Box 368 – 908 West Main  
Laurel, MT USA 59044  
phone 800-548-7341  
phone 406-628-8231  
fax 406-628-8354*

# INSTRUCTIONS

International Version

STOCK NUMBER: 97461



2" [5 CM] PAD SPACERS



***READ ALL INSTRUCTIONS AND WARNINGS  
BEFORE USING THIS PRODUCT***



**DESIGNED FOR THE MATERIALS HANDLING PROFESSIONAL**



# SPECIFICATIONS

---

**Stock Number:** 97461

**Description:** The 2" [5 cm] Pad Spacer option enables small Quadra-Tilt™ vacuum lifters (including MTA4, MTA6, MTA8, and MRTA6 models) to handle mullions or other loads with similar obstructions on the contact surface.

# WARNINGS

---



Powr-Grip is pleased to offer the most reliable materials handling products available. Despite the high degree of security associated with 2" [5 cm] Pad Spacers, certain precautions must be observed to protect the lifter operator and others.



**Never** exceed the allowable load thickness, as described in the OPERATION section.

**Always** install each Pad Spacer as directed in the INSTALLATION section.

**Never** use a Pad Spacer that is damaged, malfunctioning, or missing parts.

**Never** exceed the Maximum Load Capacity listed for the vacuum lifter (see SPECIFICATIONS in lifter's instruction manual).

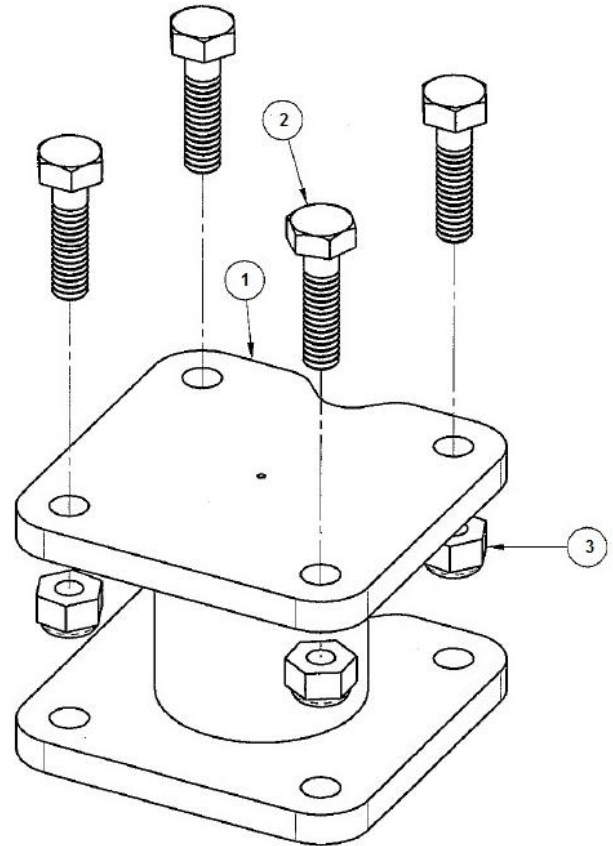
**Always** install Pad Spacers to all pad mounts. Installing Pad Spacers to some mounts and not others can cause the lifter to attach only partially to surfaces, reducing its effective load capacity.

# INSTALLATION

- 1) Suspend the vacuum lifter from a hoist as directed in the ASSEMBLY section of the lifter's instruction manual. Then tilt the pad frame to a vertical position.
- 2) Carefully disconnect the vacuum hoses from each of the vacuum pads.
- 3) Remove the 4 pad mounting bolts that attach each vacuum pad to the pad frame. Carefully remove the pads and bolts, and place them in a safe, clean place.

**CAUTION: Do not set the vacuum pads on any surfaces which could soil or damage them.**

- 4) Attach the Pad Spacers to the pad mounting plates on the pad frame, using the hex head bolts and hex nuts supplied.
- 5) To attach the vacuum pads to the Pad Spacers, reverse step 3, using the same bolts removed then.
- 6) Inspect and test the lifter as directed in the ASSEMBLY section of the lifter's instructions manual.



- 1 PAD SPACER
- 2 HEX HEAD BOLT
- 3 HEX NUT

# OPERATION

---

Follow guidelines for INTENDED USE as directed in the vacuum lifter's instructions manual. **However**, be sure to consider the Pad Spacers in determining allowable load thickness. In particular, the use of Pad Spacers can have a negative effect on load stability, which could result in unexpected tilt movement.

 **WARNING: Pad Spacers can reduce load stability, causing unexpected tilt movement.**

To prevent unexpected load movement, you may need to avoid lifting loads of the maximum allowable thickness.<sup>1</sup> Test each load to determine whether it will remain stable in the upright position without assistance from the operator. If not, the load could tilt unexpectedly, resulting in possible injury to the operator or others nearby.

Otherwise, operate the lifter as directed in the OPERATION section of the lifter's instruction manual.

---

<sup>1</sup> Allowable thickness increases as load weight decreases. If necessary, contact Wood's Powr-Grip for help in determining the maximum thickness permitted when handling any specific load.

# MAINTENANCE

---

When performing inspections and tests as directed in the lifter's instruction manual, be sure to include all parts of the currently installed 2" [5 cm] Pad Spacers whenever applicable.

# REPLACEMENT PARTS LIST

---

<b>Stock No.</b>	<b>Description</b>	<b>Qty.</b>
10708	Bolt – Hex Head – 1/4-20 Thread x 1" – Grade 8 (for mounting Pad Spacers)	4*
11010	Hex Nut – 1/4-20 Thread – Grade 8 (for mounting Pad Spacers)	4*
10900	Shoulder Bolt – Socket Head – 5/16" x 1/2" x 1/4-20 Thread (for mounting pads)	48

\* Adjust quantity as required.

***SERVICE ONLY WITH IDENTICAL REPLACEMENT PARTS,  
AVAILABLE AT WPG.COM OR THROUGH AN AUTHORIZED WPG DEALER***



# LIMITED WARRANTY

---

Powr-Grip products are carefully constructed, thoroughly inspected at various stages of production, and individually tested. They are warranted to be free from defects in workmanship and materials for a period of one year from the date of purchase.

If a problem develops during the warranty period, follow the instructions hereafter to obtain warranty service. If inspection shows that the problem is due to defective workmanship or materials, Powr-Grip will repair the product without charge.

## **WARRANTY DOES NOT APPLY WHEN:**

Modifications have been made to the product after leaving the factory.

Rubber portions have been cut or scratched during use.

Repairs are required due to abnormal wear and tear.

The product has been damaged, misused, or neglected.

If a problem is not covered under warranty, Powr-Grip will notify the customer of costs prior to repair. If the customer agrees to pay all repair costs and to receive the repaired product on a C.O.D. basis, Powr-Grip then will proceed with repairs.

## **TO OBTAIN REPAIRS OR WARRANTY SERVICE**

For purchases in *North America*:

Contact the Technical Service Department at Wood's Powr-Grip Co. When factory service is required, ship the complete product—prepaid—along with your name, address and phone number to the street address hereafter.

For purchases in *all other localities*:

Contact your dealer or the Technical Service Department at Wood's Powr-Grip Co. for assistance.

Wood's Powr-Grip Co., Inc.  
908 West Main St. / P.O. Box 368  
Laurel, MT USA 59044

phone 800-548-7341

phone 406-628-8231

