

**KEEP FOR FUTURE REFERENCE**



*P.O. Box 368 – 908 West Main  
Laurel, MT USA 59044  
phone 800-548-7341  
phone 406-628-8231  
fax 406-628-8354*

# INSTRUCTIONS

International Version

STOCK NUMBERS: 93050

VACUUM LIFT LIGHT



***READ ALL INSTRUCTIONS AND WARNINGS  
BEFORE USING THIS PRODUCT***



**DESIGNED FOR THE MATERIALS HANDLING PROFESSIONAL**



# SPECIFICATIONS

---

**Stock Number:** 93050

**Description:** A green indicator light is operative while the main power switch is in the "on" position (I). A vacuum switch energizes the lift light whenever the lifter's vacuum is higher than the minimum level specified for Maximum Load Capacity (see SPECIFICATIONS in lifter's instruction manual). Although a vacuum gauge always indicates the current vacuum level, the lift light provides an additional, more prominent visual indicator that vacuum is sufficient for lifting the maximum load weight.

**Weight:** 2 lbs [1 kg]

Note: Make sure to add the weight of all options to the lifter weight when you are selecting appropriate hoisting equipment (see lifter's instruction manual).

## WARNINGS

---



Powr-Grip is pleased to offer the most reliable vacuum products available. Despite the high degree of security provided by the Vacuum Lift Light, certain precautions must be observed to protect the operator and others.



**Never** use a lift light that is damaged, malfunctioning, or missing parts.

**Always** make sure the lift light can be seen while operating the vacuum lifter.

**Never** lift a load when the lift light or any other vacuum indicator signals inadequate vacuum.

**Never** disconnect or otherwise disable the lift light while operating the lifter.

**Always** keep other personnel far enough away from the lifter to avoid injury in the event of an unexpected load release.

**Always** remember that modifications to the lift light may compromise safety. Wood's Powr-Grip cannot be responsible for the safety of a lift light that has been modified by the customer. For consultation, contact Wood's Powr-Grip (see LIMITED WARRANTY).

# INSTALLATION

---

- 1) Remove the Vacuum Lift Light from its protective packaging.
- 2) Follow the vacuum lifter's instruction manual to verify that the lifter is in good working order before installing the lift light.
- 3) Remove the existing power switch enclosure and disconnect the wiring. Then mount the new enclosure on the lifter and connect the wiring, using the appropriate wiring diagram (provided).
- 4) Route vacuum hose from the lifter's vacuum system to the appropriate fitting(s) of the new enclosure, so that the lift light turns on when the vacuum switch registers sufficient vacuum for lifting the Maximum Load Capacity (see SPECIFICATIONS in lifter's instruction manual).  
Note that the necessary hose routing differs, depending on the lifter in question. In addition, lifters equipped with a vacuum reserve tank may have some redundant vacuum system components, which must be removed during lift light installation. If necessary, contact your Authorized Service Center or Wood's Powr-Grip for additional information.
- 5) Test the vacuum setting as directed under MAINTENANCE: VACUUM SETTING ADJUSTMENT, and if necessary, adjust the setting as directed. Then install the enclosure cover. Now the lift light is operational.
- 6) Test the lift light as directed under MAINTENANCE: TESTING SCHEDULE.

# OPERATION

---

Using the Vacuum Lift Light requires minimal interaction from the operator. Operate the vacuum lifter as directed in the OPERATION section of the lifter's instruction manual. After all vacuum pads seal securely against the load and the lifter attains the vacuum level required for the Maximum Load Capacity (see SPECIFICATIONS in lifter's instruction manual), the lift light turns on to indicate that the lifter is ready to lift the maximum load weight.

 **WARNING: Never attempt to lift load unless green lift light is illuminated.**

Do not attempt to lift the load unless the lift light is illuminated; such an attempt could result in a load release and possible injury to the operator. If the lift light does not turn on, press on any pad that has not yet sealed.

 **WARNING: Lift light must be visible to operator throughout entire lift.**

The lift light must remain completely visible to the operator, so that it can be monitored throughout the entire lift. If the lift light turns off while you are lifting a load, make sure the vacuum gauge shows a vacuum level of 16" Hg [-54 kPa] or higher. If not, move away and stay clear of the load until it can be lowered to the ground or a stable support.

 **WARNING: Stay clear of any suspended load while vacuum level is lower than 16" Hg [-54 kPa].**

Discontinue lifter use until the cause of the vacuum loss can be determined. If the lift light does not turn on when the lifter is attached to clean, smooth, nonporous materials, the leakage is likely to be in the vacuum system. In this event, perform a vacuum test (see MAINTENANCE in lifter's instruction manual) and inspect the vacuum pads for damage (see MAINTENANCE in lifter's instruction manual). If the vacuum loss cannot be remedied immediately, perform inspection and maintenance as needed to identify and correct any deficiency before resuming normal operation of the lifter.

# MAINTENANCE

---

When performing inspections and tests of the lifter as directed in the MAINTENANCE section of the lifter's instruction manual, be sure to include the Vacuum Lift Light whenever applicable. Consult the VACUUM SWITCH ADJUSTMENT section (to follow) for Inspection/Testing and Adjustment procedures.

Note: One or more wiring diagrams are provided in the final section of this *INSTRUCTIONS* manual for reference when servicing the lift light or trouble-shooting a deficiency.

# VACUUM SWITCH ADJUSTMENT

## Vacuum Switch Function

A vacuum switch controls the vacuum lift light for an AC lifter (see OPERATING FEATURES for location of vacuum switch). After the lifter attains a vacuum level sufficient for lifting the maximum load weight (hereafter, "minimum lifting level"), the vacuum switch automatically turns on the lift light. When vacuum decreases to a level that is lower than the minimum lifting level (as when releasing a load), the vacuum switch automatically turns off the lift light again, until the minimum lifting level is regained.

## Conditions Requiring Readjustment

At the factory, the vacuum switch is set to the minimum vacuum level specified for Load Capacity (see SPECIFICATIONS). However, shipping vibrations or shocks, normal wear, or other conditions may adversely affect this adjustment. Periodically verify the switch adjustment by comparing how the vacuum lift light functions in relation to the vacuum level registered on the vacuum gauge, as follows:

- If the lift light *turns on before* vacuum attains the minimum lifting level, it is likely that the air filter's element is dirty. **Any filter element that obstructs airflow must be replaced** (refer to AIR FILTER MAINTENANCE preceding). Otherwise, the lift light would turn on at vacuum levels that are not sufficient to lift the maximum load weight.
- If the lift light *does not turn on after* vacuum increases to a level much *higher* than the minimum lifting level, the light bulb may be burned out. If this condition persists after the bulb has been replaced, the vacuum switch may need to be adjusted to turn on the lift light at a lower vacuum level. Otherwise, the operator might wait unnecessarily for the lift light to turn on, after the lifter has already attained sufficient vacuum to lift the maximum load weight.
- If the lift light *does not turn off before* vacuum decreases to a level *lower* than the minimum lifting level, the vacuum switch **must be adjusted to turn off the lift light at a higher vacuum level.**<sup>1</sup> Otherwise, the lift light would remain on at vacuum levels that are not sufficient to lift the maximum load weight.

## Adjustment Procedure

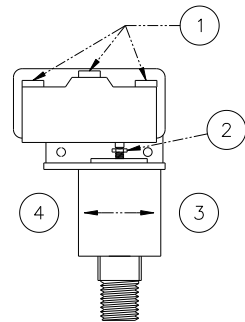
- 1) Using a 1/4" open-end wrench (as provided), turn the adjustment screw about 1/6th turn at a time (approximately one flat of the screw head).

To make the vacuum lift light turn *on* at a *lower* vacuum level, turn the screw *clockwise* (when viewing vacuum switch from end with electrical connectors).

To make the lift light turn *off* at a *higher* vacuum level, turn the screw *counter-clockwise* (when viewing vacuum switch from end with electrical connectors).

- 2) Recheck the vacuum switch setting following each 1/6th turn of the adjustment screw. In order to test the adjustment accurately, release the vacuum pads completely before reapplying them to a test surface.

When the vacuum switch is adjusted correctly, the lift light turns on only *after* vacuum increases to a level higher than the minimum lifting level; and the lift light turns off again *before* vacuum decreases to a level lower than the minimum lifting level.



- 1 ELECTRICAL CONNECTORS
- 2 ADJUSTMENT SCREW
- 3 LIGHT OFF AT HIGHER VACUUM
- 4 LIGHT ON AT LOWER VACUUM

<sup>1</sup> In order to observe lifter functions while vacuum is decreasing, it may be necessary to create a controlled leak in the vacuum system (e.g., by breaking the seal between one or more vacuum pads and the test surface).

# REPLACEMENT PARTS LIST

---

<b>Stock No.</b>	<b>Description</b>	<b>Qty.</b>
64289	Bulb - 24 V - Bayonet (for 24 V light)	1
64284	Bulb - 6.3 V - Bayonet (for 120 V and 240 V lights)	1
64262	Green Light Lens	1
64236	Vacuum Switch	1

***SERVICE ONLY WITH IDENTICAL REPLACEMENT PARTS,  
AVAILABLE AT WPG.COM OR THROUGH AN AUTHORIZED WPG DEALER***

# LIMITED WARRANTY

---

Powr-Grip products are carefully constructed, thoroughly inspected at various stages of production, and individually tested. They are warranted to be free from defects in workmanship and materials for a period of one year from the date of purchase.

If a problem develops during the warranty period, follow the instructions hereafter to obtain warranty service. If inspection shows that the problem is due to defective workmanship or materials, Powr-Grip will repair the product without charge.

## ***WARRANTY DOES NOT APPLY WHEN:***

Modifications have been made to the product after leaving the factory.

Rubber portions have been cut or scratched during use.

Repairs are required due to abnormal wear and tear.

The product has been damaged, misused, or neglected.

If a problem is not covered under warranty, Powr-Grip will notify the customer of costs prior to repair. If the customer agrees to pay all repair costs and to receive the repaired product on a C.O.D. basis, Powr-Grip then will proceed with repairs.

## **TO OBTAIN REPAIRS OR WARRANTY SERVICE**

For purchases in *North America*:

Contact the Technical Service Department at Wood's Powr-Grip Co. When factory service is required, ship the complete product--prepaid--along with your name, address and phone number to the street address hereafter.

For purchases in *all other localities*:

Contact your dealer or the Technical Service Department at Wood's Powr-Grip Co. for assistance.

Wood's Powr-Grip Co., Inc.  
908 West Main St. / P.O. Box 368  
Laurel, MT USA 59044

phone 800-548-7341

phone 406-628-8231

fax 406-628-83



DIRECTORY: **STANDARD** FILE (SHEET): **708A-W01 [A-W01]**

WIRE LEGEND: CONTROLLED BY WIRING SYMBOLS DRAWING EXCEPT AS NOTED AND BELOW.  
LINE STYLES AND WIDTHS FOR WIRE UNLESS NOTED OTHERWISE.  
--- 20AWG  
--- 16AWG  
--- 14AWG

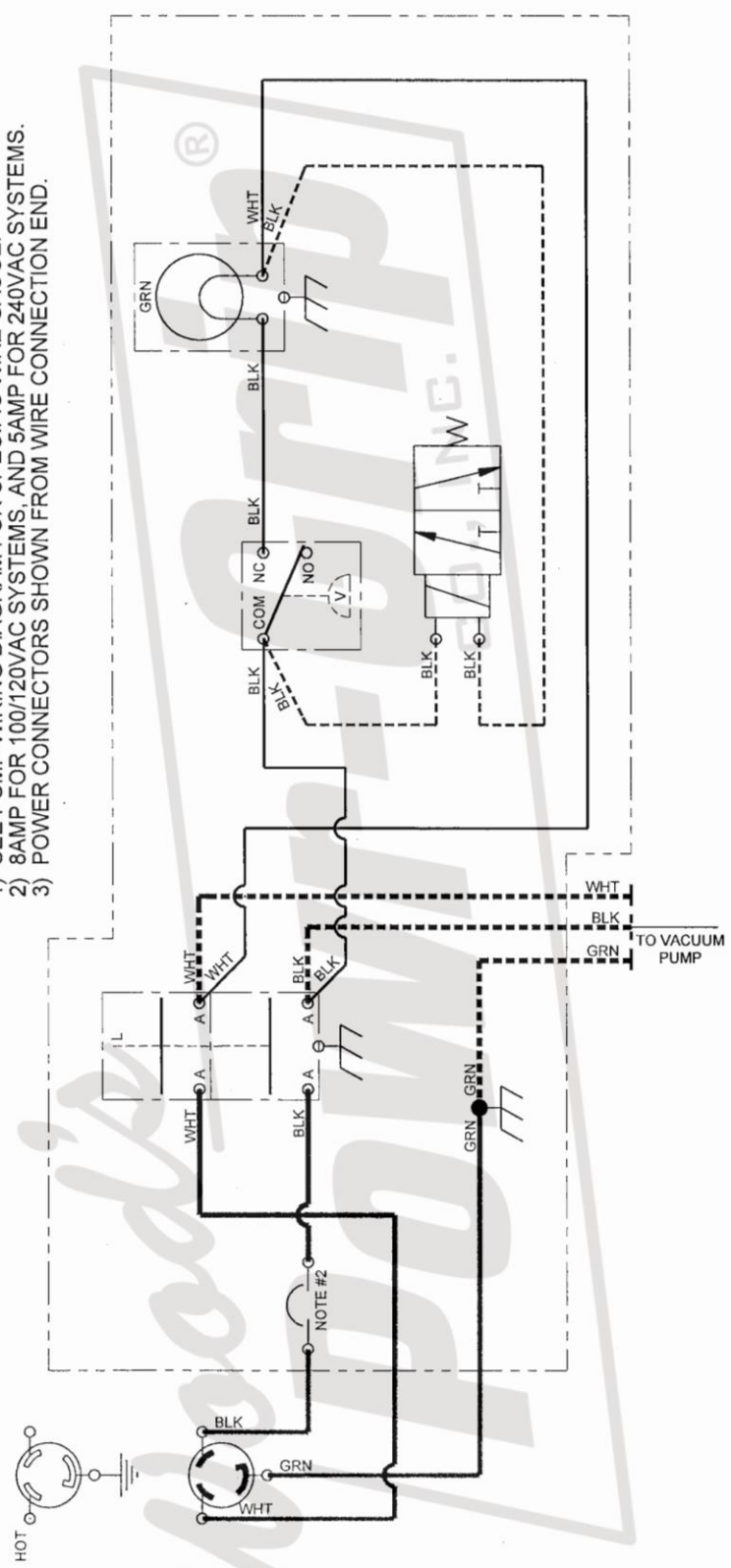
THIS DRAWING IS THE PROPERTY OF **WOOD'S POWR-GRIP CO., INC.** IT IS LOANED WITH THE UNDERSTANDING THAT NEITHER IT NOR ANY INFORMATION CONTAINED THEREIN WILL BE COPIED, PUBLISHED OR TRANSMITTED TO OTHERS WITHOUT EXPRESS WRITTEN PERMISSION.  
**LAUREL MONTANA U.S.A.**

**3 SCFM AC VACCUUM PACKAGE  
GREEN LIGHT POWER ENCLOSURE  
AC POWER ENCLOSURE WIRING DIAGRAM  
D708A-W01 [A-W01]**

DRAWN: **L. RENNER** DATE: **01/18/2007**  
CHECKED: **CR** DATE: **03-27-12**  
APPROVED: **CMR** DATE: **3-27-12**

SIZE: **A** SCALE: **NONE** REV: **2** ECN NUMBER: **2848** DATE: **03/22/2012** BY: **RAS**

- NOTES:
- 1) SEE PUMP WIRING DIAGRAM FOR SPECIFIC WIRE GAUGE.
  - 2) 8AMP FOR 100/120VAC SYSTEMS, AND 5AMP FOR 240VAC SYSTEMS.
  - 3) POWER CONNECTORS SHOWN FROM WIRE CONNECTION END.



THIS DRAWING IS THE PROPERTY OF  
**WOOD'S POWR-GRIP CO., INC.**  
 IT IS LOANED WITH THE UNDERSTANDING THAT NEITHER IT NOR ANY  
 INFORMATION CONTAINED THEREIN WILL BE COPIED, PUBLISHED OR  
 TRANSMITTED TO OTHERS WITHOUT EXPRESS WRITTEN PERMISSION.  
 LAUREL,  
 MONTANA  
 U.S.A.

DECIMAL  
 XXX ±N/A  
 ANGULAR  
 X° ±N/A  
 FRACTIONAL  
 XIXX ±N/A  
 φ 1" ± φ XXX ±N/A  
 φ X.XXX ±N/A  
 φ X.XXX ±N/A  
 LIMITS: INCHES (MILLIMETERS), DO NOT SCALE.

**800# MANUAL TILTER - ABOVE CENTER  
 GREEN LIGHT OPTION  
 GREEN LIGHT OPTION WIRING  
 811B-W01 [B-W01]**

DRAWN:  
 G. BOND  
 DATE:  
 04/30/2008

SIZE: SCALE: REV.: ECN NUMBER: DATE: BY:  
**A NONE 2 2086 02/13/2009 RLR**

CHECKED:  
 CR  
 APPROVED:  
 Cmm  
 DATE:  
 07-09-09  
 7-11-09

