

KEEP FOR FUTURE REFERENCE

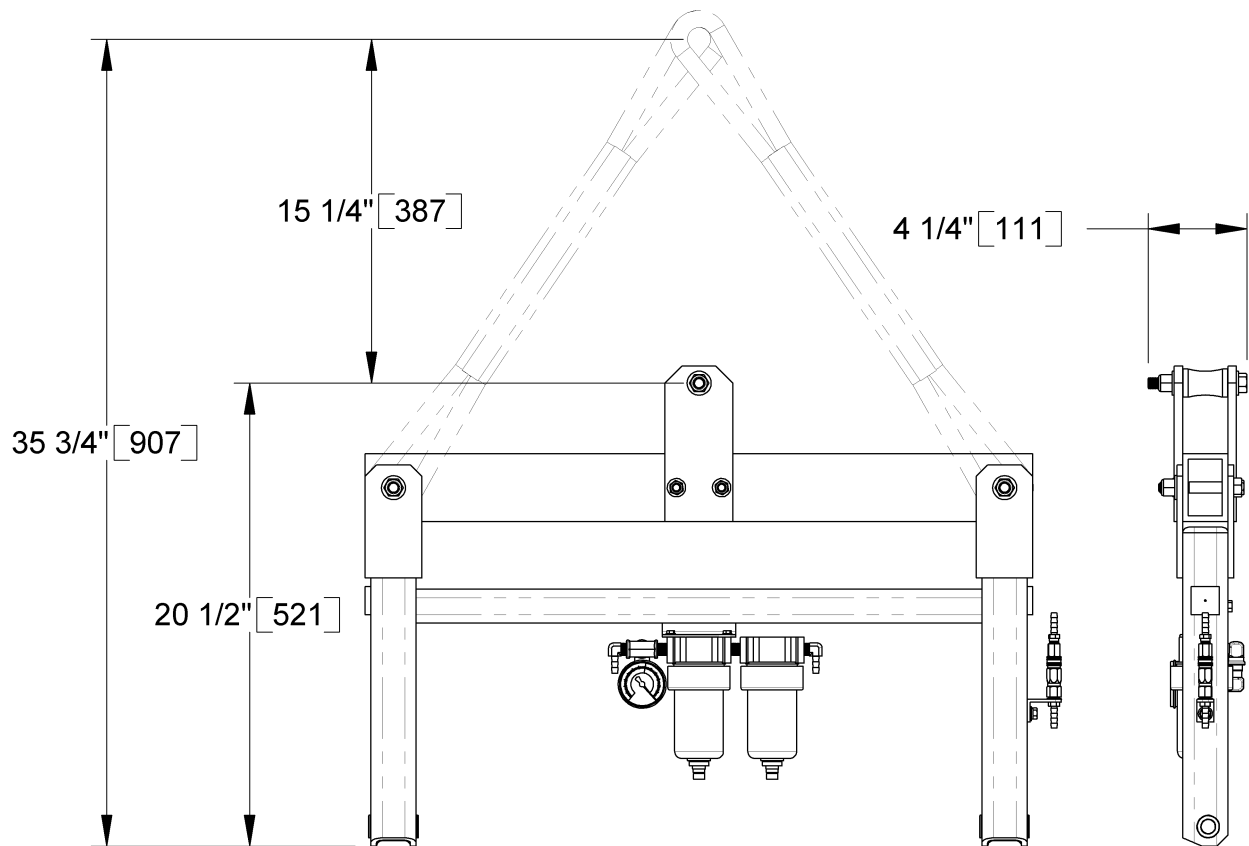


*P.O. Box 368 – 908 West Main
Laurel, MT USA 59044
phone 800-548-7341
phone 406-628-8231
fax 406-628-8354*

INSTRUCTIONS

International Version

STOCK NUMBER: 95906



MT CENTER SPOOL LIFT BAR BOLT-ON ADAPTER

(SHOWN MOUNTED ON MT LIFTER)



***READ ALL INSTRUCTIONS AND WARNINGS
BEFORE USING THIS PRODUCT***



DESIGNED FOR THE MATERIALS HANDLING PROFESSIONAL

SPECIFICATIONS

Stock Number: 95906

Description: By eliminating the need for slings or other rigging, this option allows the hook of hoisting equipment to attach directly to the lift bar of the vacuum lifter, thereby reducing the overhead clearance requirement, without replacing the existing lift bar.

Maximum Load Capacity: 1500 lbs [680 kg]

Note: When the Maximum Load Capacity of the vacuum lifter is different, do not exceed the **lesser** of the two capacities (see SPECIFICATIONS in lifter's instruction manual).

Weight: 9 lbs [4 kg]

Note: Make sure to add the weight of all options to the Lifter Weight when you are selecting appropriate hoisting equipment (see ASSEMBLY in lifter's instruction manual).

WARNINGS



Powr-Grip is pleased to offer the most reliable materials handling products available. Despite the high degree of security provided by this product, certain precautions must be observed to protect the lifter operator and others.



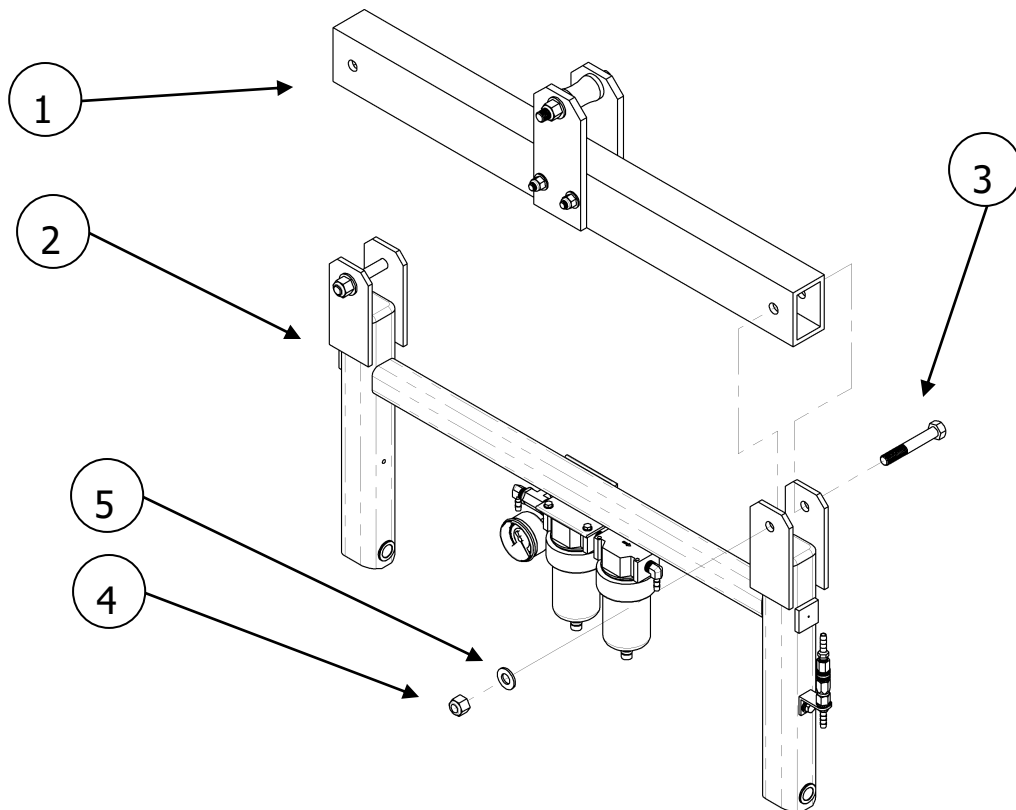
Never use a Center Spool Adapter that is damaged or missing parts.

Never exceed the Maximum Load Capacity listed for the Center Spool Adapter or for the lifter, whichever is **less** (see SPECIFICATIONS in lifter's instruction manual).

Always make sure the Center Spool Adapter is installed as directed (see ASSEMBLY).

Always remember that modifications to the Center Spool Adapter may compromise its safety. Wood's Powr-Grip cannot be responsible for the safety of a Center Spool Adapter that has been modified by the customer. For consultation, contact Wood's Powr-Grip (see LIMITED WARRANTY).

ASSEMBLY



Center Spool Adapter shown MT Lift Bar Assembly.

- | | | |
|-------------------------|-------------------------|---------------------|
| 1) CENTER SPOOL ADAPTER | 3) 1/2-13 HEX HEAD BOLT | 5) 1/2" FLAT WASHER |
| 2) MT LIFT BAR ASSEMBLY | 4) 1/2-13 JAM HEX NUT | |

- 1) Remove the two hex head bolts, washers and nuts that connect the lift slings to the lift bar assembly of your existing MT lifter.
- 2) Position the Center Spool Adapter on the lift bar assembly as shown.
- 3) To secure the Center Spool Adapter, reinstall the hex head bolts, washers, and nuts in that order. Do not over-tighten the nuts.

OPERATION

After the Center Spool Adapter has been installed, operate the lifter as directed in the OPERATION section of lifter's instruction manual.

MAINTENANCE

When performing inspections and tests as directed in the lifter's instruction manual, be sure to include all parts of the Center Spool Adapter whenever applicable.

LIMITED WARRANTY

Powr-Grip products are carefully constructed, thoroughly inspected at various stages of production, and individually tested. They are warranted to be free from defects in workmanship and materials for a period of one year from the date of purchase.

If a problem develops during the warranty period, follow the instructions hereafter to obtain warranty service. If inspection shows that the problem is due to defective workmanship or materials, Powr-Grip will repair the product without charge.

WARRANTY DOES NOT APPLY WHEN:

Modifications have been made to the product after leaving the factory.

Rubber portions have been cut or scratched during use.

Repairs are required due to abnormal wear and tear.

The product has been damaged, misused, or neglected.

If a problem is not covered under warranty, Powr-Grip will notify the customer of costs prior to repair. If the customer agrees to pay all repair costs and to receive the repaired product on a C.O.D. basis, Powr-Grip then will proceed with repairs.

TO OBTAIN REPAIRS OR WARRANTY SERVICE

For purchases in *North America*:

Contact the Technical Service Department at Wood's Powr-Grip Co. When factory service is required, ship the complete product--prepaid--along with your name, address and phone number to the street address hereafter.

For purchases in *all other localities*:

Contact your dealer or the Technical Service Department at Wood's Powr-Grip Co. for assistance.

Wood's Powr-Grip Co., Inc.
908 West Main St. / P.O. Box 368
Laurel, MT USA 59044

phone 800-548-7341

phone 406-628-8231

fax 406-628-83