

KEEP FOR FUTURE REFERENCE

# INSTRUCTIONS

# MANUAL



908 W. Main • P.O. Box 368  
Laurel, MT USA 59044  
800-548-7341 (phone)  
406-628-8231 (phone)  
406-628-8354 (fax)  
[www.WPG.com](http://www.WPG.com)

 **INTENDED FOR USE BY SKILLED  
TECHNICAL PROFESSIONALS • READ AND  
UNDERSTAND BEFORE INSTALLING AND USING**



**MRT4 ADAPTABLE-LENGTH LIFT BAR**

Stock number: 95723



# TABLE OF CONTENTS

**SPECIFICATIONS .....2**

**INSTALLATION .....3**

    TO INSTALL THE ADAPTABLE-LENGTH LIFT BAR .....3

**ASSEMBLY .....4**

    TO SELECT THE APPROPRIATE CONFIGURATION .....4

    TO SET UP THE SHORT CONFIGURATION.....5



    TO SET UP THE STANDARD CONFIGURATION .....6

**REPLACEMENT PARTS.....7**

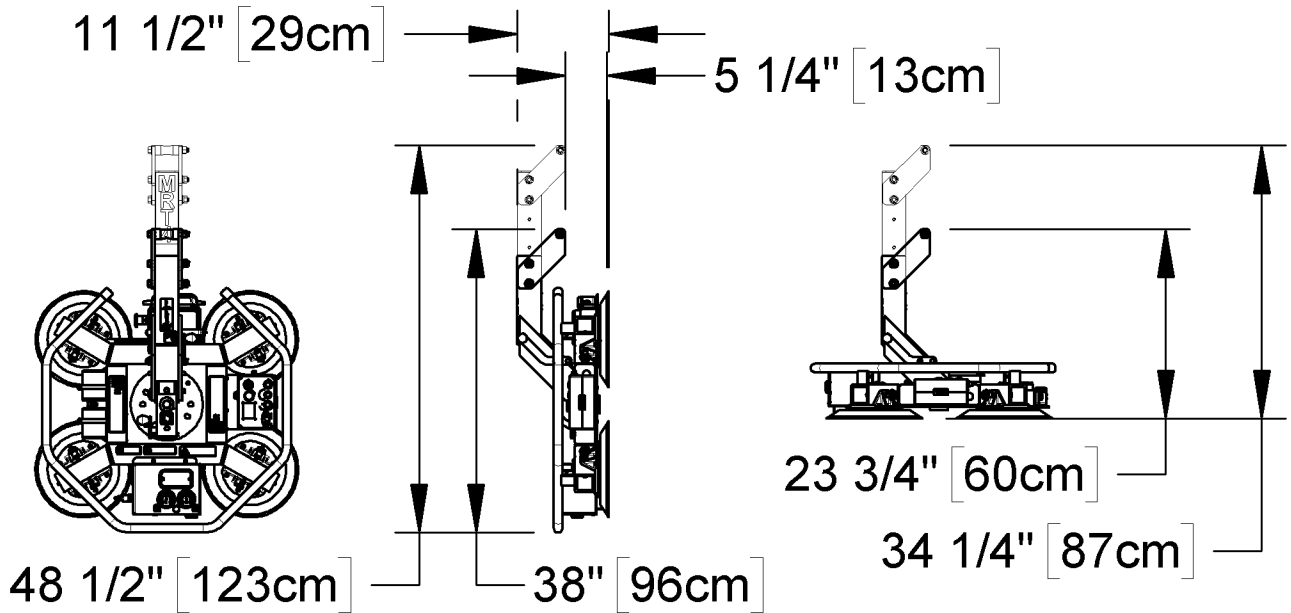
**LIMITED WARRANTY .....8**

    TO OBTAIN REPAIRS OR WARRANTY SERVICE.....8

# SPECIFICATIONS

<b>Product Description</b>	This lift bar is designed for applications requiring minimal clearance between the lifter and the hoisting equipment, such as installations under eaves, gables or overhangs.
<b>Stock Number</b>	95723
 <b>Maximum Load Capacity</b>	700 lbs [320 kg]
 <b>Weight Increase</b>	10 lbs [5 kg] <i>Note: Make sure to add the weight of all options to the Lifter Weight when you are selecting appropriate hoisting equipment (see ASSEMBLY in lifter's OPERATING INSTRUCTIONS).</i>
<b>Overhead Clearance Reduction</b>	10½" [25 cm] with short configuration*

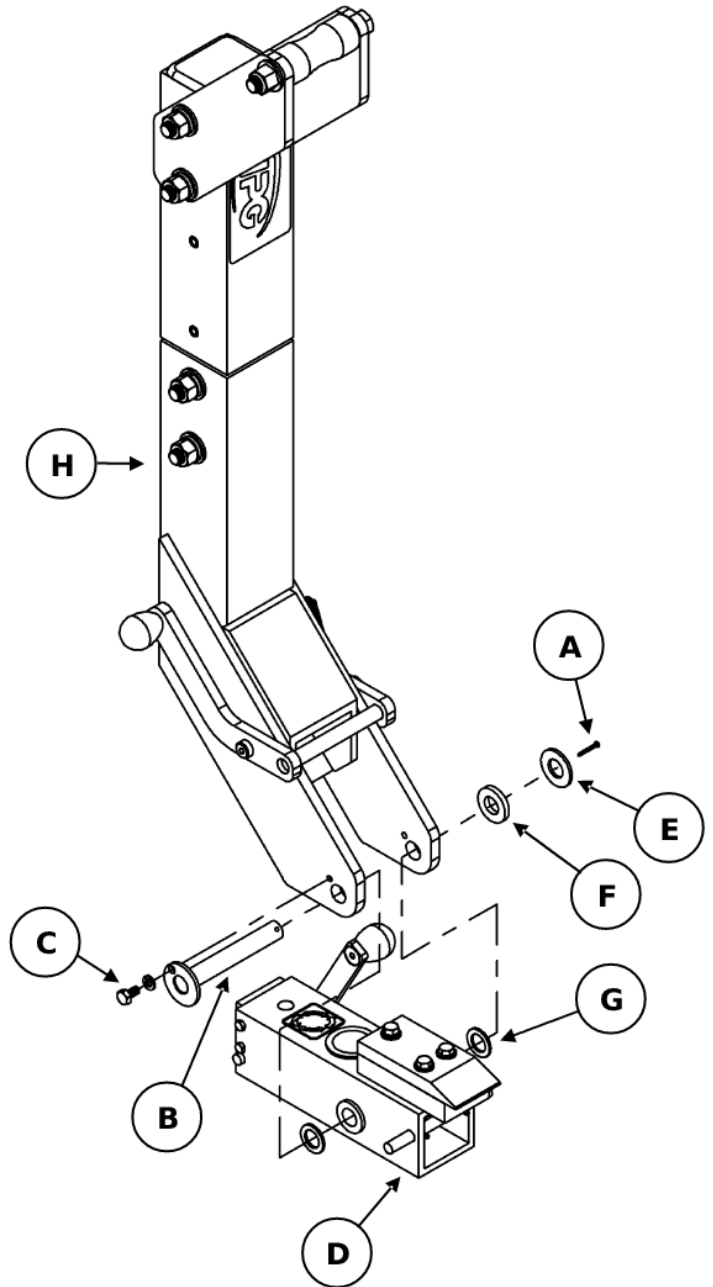
\* To view lift-bar configurations, see illustrations below and ["TO SELECT THE APPROPRIATE CONFIGURATION"](#).



# INSTALLATION

## TO INSTALL THE ADAPTABLE-LENGTH LIFT BAR

- 1) Remove the original lift bar from the vacuum lifter:
  - 1.1) Remove the cotter pin (A) from the end of the tilt pin (B).
  - 1.2) Remove the hex head bolt (C) and its washer from the opposite end. This will enable you to slide the tilt pin out from the center section (D).
  - 1.3) Remove the tilt pin and the original lift bar. Make sure to lay out the outer flat washer (E), the foam washer (F) and the machine bushings (G) in the appropriate order for installing the new lift bar.
- 2) Install the Adaptable-Length Lift Bar (H):
  - 2.1) Slide the new lift bar into position as shown in the illustration.
  - 2.2) Install the tilt pin (B) and its associated hardware **in the same order as originally installed**. In particular, the machine bushings (G) must go *inside* of the plates of the Adaptable-Length Lift Bar.  
  
Make sure that the hex head bolt (C) and a new cotter pin hold the tilt pin (B) securely in place.



*Note: Whenever necessary, clean the hardware and replace the foam washer (#54214). Additionally, **replace the cotter pin (#13200) whenever it is removed**, as it is only intended for one-time use (see ["REPLACEMENT PARTS"](#)).*

# ASSEMBLY

## TO SELECT THE APPROPRIATE CONFIGURATION

Before suspending the vacuum lifter from hoisting equipment as directed in the “ASSEMBLY” section of the lifter’s *OPERATING INSTRUCTIONS*, assemble the Adaptable-Length Lift Bar in the appropriate configuration for the intended use:

- For normal applications (see “OPERATION: BEFORE USING THE LIFTER” in lifter’s *OPERATING INSTRUCTIONS*), use the standard configuration (fig. 1A).
- For applications involving minimal overhead clearance, use the short configuration (fig. 1B).



*Note: Either shortening or lengthening the Adaptable-Length Lift Bar affects the hang angle of the lifter and the load. The operator should anticipate and compensate for this change.*

# ASSEMBLY

## TO SET UP THE SHORT CONFIGURATION

1) Disconnect the lift point assembly from the upper lift bar segment:

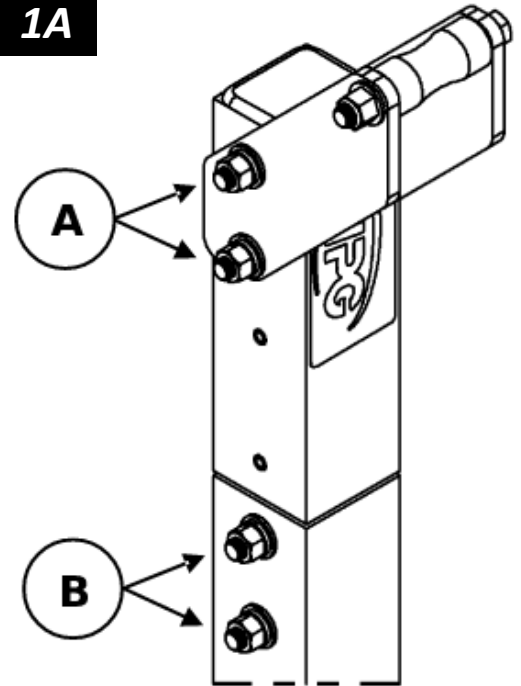
1.1) Remove the 4 $\frac{3}{4}$ " hex head bolts and associated hardware (items A in fig. 1A) that secure the assembly on the segment.

1.2) Remove the assembly from the segment.

2) Remove the 4" hex head bolts and associated hardware (items B in fig. 1A) that secure the 2 lift bar segments. Then disconnect the segments.

*Note: Store the upper lift bar segment, 4" hex head bolts and associated hardware for later use.*

1A



3) Connect the assembly to the lower lift bar segment:

3.1) Align the holes of the assembly with the corresponding holes at the top of the segment. Make sure the assembly is oriented as shown in fig. 3A.



**Do not reverse orientation of lift point assembly when reconfiguring lift bar.**

3.2) Use the removed 4 $\frac{3}{4}$ " hex head bolts and associated hardware to tightly secure the assembly on the segment.

3A





# ASSEMBLY

## TO SET UP THE STANDARD CONFIGURATION

- 1) Disconnect the lift point assembly from the lower lift bar segment:
  - 1.1) Remove the 4 $\frac{3}{4}$ " hex head bolts and associated hardware that secure the assembly to the segment.
  - 1.2) Remove the assembly from the segment.
- 2) Connect the upper and lower lift bar segments. Use the 4" hex head bolts and associated hardware to tightly secure the segments.
- 3) Connect the assembly to the upper lift bar segment:
  - 3.1) Align the holes of the assembly with the corresponding holes at the top of the segment. Make sure the assembly is oriented as shown in fig. 3A.



***Do not reverse orientation of lift point assembly when reconfiguring lift bar.***

- 3.2) Use the removed 4 $\frac{3}{4}$ " hex head bolts and associated hardware to tightly secure the assembly on the segment.





# REPLACEMENT PARTS

Stock No.	Description	Qty.
54214	Foam Washer	1
49180	End Plug	1
13200	Cotter Pin – 3/32" x 1"	1
12826	1/2" SAE Flat Washer	10
12760	1/2" Split Lock Washer	4
11124	1/2-13 Hex Nut	4
10859	1/2-13 x 4-3/4" Hex Head Bolt	3
10854	1/2-13 x 4" Hex Head Bolt	2

**SERVICE ONLY WITH IDENTICAL REPLACEMENT PARTS,  
AVAILABLE AT [WPG.COM](http://WPG.COM) OR THROUGH AN AUTHORIZED WPG DEALER**

# LIMITED WARRANTY

Wood's Powr-Grip® (WPG) products are carefully constructed, thoroughly inspected at various stages of production, and individually tested. They are warranted to be free from defects in workmanship and materials for a period of one year from the date of purchase.

If a problem develops during the warranty period, follow the instructions below to obtain warranty service. If inspection shows that the problem is due to defective workmanship or materials, WPG will repair the product without charge.

## **Warranty does not apply when ...**

- modifications have been made to the product after leaving the factory
- rubber portions have been cut or scratched during use;
- repairs are required due to abnormal wear and tear, and/or;
- the product has been damaged, misused or neglected.

If a problem is not covered under warranty, WPG will notify the customer of costs prior to repair. If the customer agrees to pay all repair costs and to receive the repaired product on a C.O.D. basis, then WPG will proceed with repairs.

## **TO OBTAIN REPAIRS OR WARRANTY SERVICE**

### **For purchases in *North America*:**

Contact the WPG Technical Service Department. When factory service is required, ship the complete product – prepaid – along with your name, address and phone number to the street address listed at the bottom of this page. WPG may be reached by phone or fax numbers listed below.

### **For purchases in all *other localities*:**

Contact your dealer or the WPG Technical Service Department for assistance. WPG may be reached by phone or fax numbers listed below.

Wood's Powr-Grip Co., Inc.

908 West Main St.

Laurel, MT 59044 USA

406-628-8231 (phone)

800-548-7341 (phone)

406-628-8354 (fax)