

**KEEP FOR FUTURE REFERENCE**

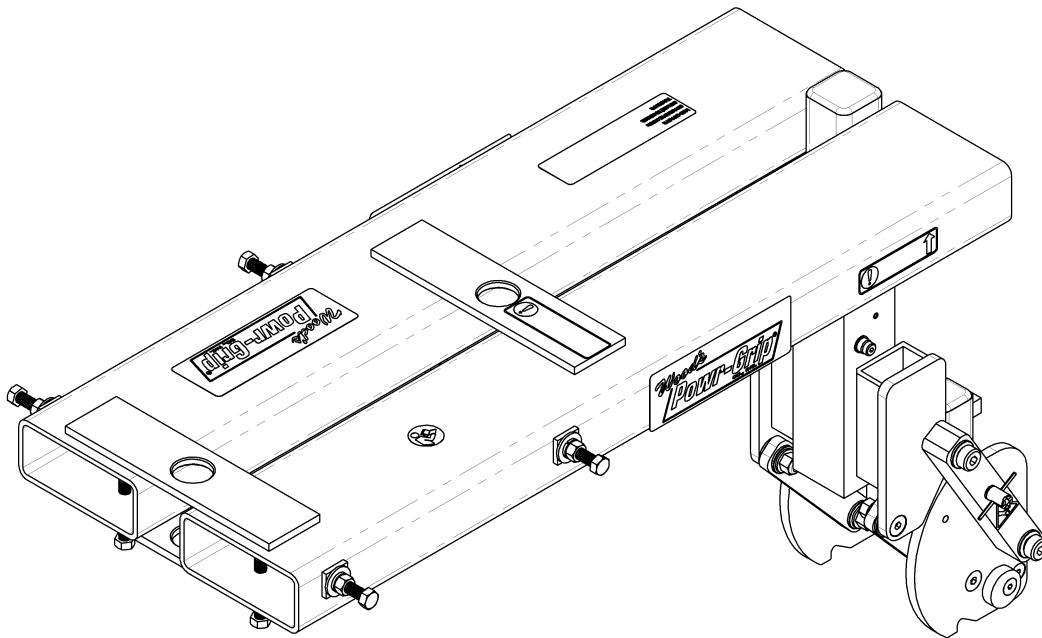


*P.O. Box 368 – 908 West Main  
Laurel, MT USA 59044  
phone 800-548-7341  
phone 406-628-8231  
fax 406-628-8354*

# INSTRUCTIONS

International Version

STOCK NUMBER: 95457



**FORKLIFT ADAPTER FOR MRTA6 AND MRTA8 LIFTERS**



***READ ALL INSTRUCTIONS AND WARNINGS  
BEFORE USING THIS PRODUCT***



**DESIGNED FOR THE MATERIALS HANDLING PROFESSIONAL**



# SPECIFICATIONS

---

**Stock Number:** 95457

**Description:** This option allows Wood's Powr-Grip model MRTA6-DC(2), MRTA8-DC2 and MRTA8-DC3 vacuum lifters to be used in applications where a forklift is preferred for supplying the upward and downward movement of the load, such as installation of windows or cladding under eaves of buildings or commercial, indoor applications, where using a crane is not possible.

**Compatible Fork Dimensions:**

thickness = 1½" to 2¼" [38-57 mm]

width = 4" to 6" [10-15 cm]

inside spread = 4" [10 cm]

**Weight Increase:** 125 lbs [57 kg] when Forklift Adapter is installed

Note: Make sure to add the weight of all options to the Lifter Weight when you are selecting appropriate hoisting equipment (see ASSEMBLY in lifter's instruction manual).

**Max. Load Capacity:** 1400 lbs [635 kg]\*



**\* WARNING: Load Capacity of option cannot exceed lifter rating; see SPECIFICATIONS in lifter's instruction manual.**

# WARNINGS

---



Powr-Grip is pleased to offer the most reliable materials handling products available. Despite the high degree of security provided by the Forklift Adapter, certain precautions must be observed to protect the operator and others.



**Never** use a Forklift Adapter that is damaged, malfunctioning, or missing parts.

**Never** exceed the Maximum Load Capacity listed for the Forklift Adapter (see SPECIFICATIONS).

**Always** install the Forklift Adapter in the prescribed orientation (see INSTALLATION: INSTALLING THE ADAPTED LIFTER ON A FORKLIFT).

**Never** use anything except a forklift to raise or lower the lifter and load when the Forklift Adapter is installed on the lifter. Reinstall the standard lift bar if a hoist is to be used (see INSTALLATION: INSTALLING THE FORKLIFT ADAPTER ON A LIFTER).

**Always** make sure other personnel are clear of the lifter and load while they are being moved and/or lifted by the forklift.

**Never** attempt to manipulate the load in any manner while the forklift is moving.

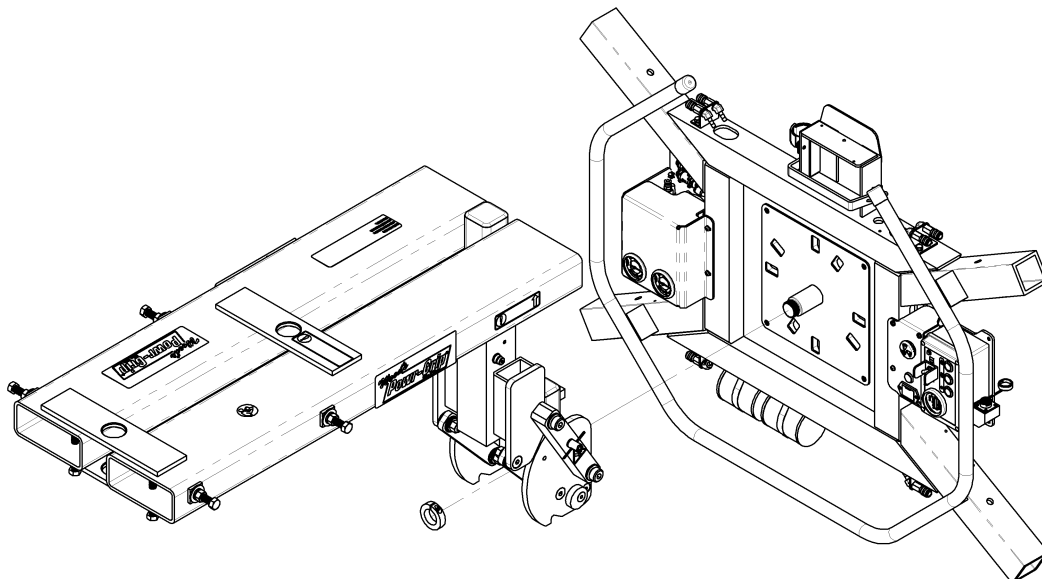
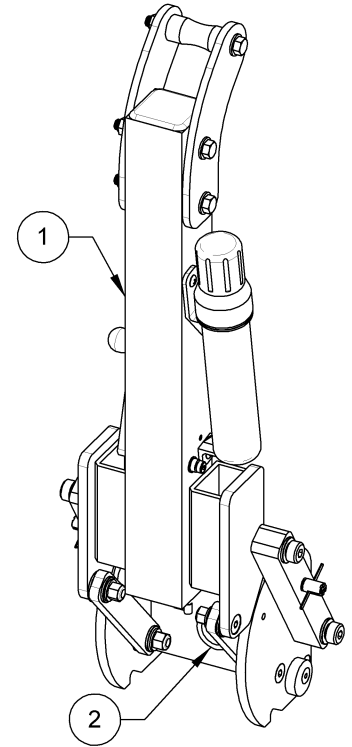
**Always** remember that modifications to the Forklift Adapter may compromise safety. Wood's Powr-Grip cannot be responsible for the safety of a Forklift Adapter that has been modified by the customer. For consultation, contact Wood's Powr-Grip (see LIMITED WARRANTY).

# INSTALLATION

## INSTALLING THE FORKLIFT ADAPTER ON A LIFTER

In order to be used successfully, the Forklift Adapter must be installed correctly on an applicable model of Wood's Powr-Grip vacuum lifter (see SPECIFICATIONS). If the Forklift Adapter is already installed as directed below, proceed to the next section.

- 1) Remove the lift bar/center section assembly (see illustration at right) from the lifter: Make sure the pad frame is supported independently. Identify the rotation pin, which connects the center section (2) to the pad frame. Remove the locking collar from the end of the rotation pin and slide the center section off the pin.
- 2) Secure the Forklift Adapter in place of the lift bar (1) on the lifter (see illustration below): Reverse the procedure in step 1 to reconnect the center section to the pad frame. Make sure all hardware is installed on the lifter as it originally was.



# INSTALLING THE ADAPTED LIFTER ON A FORKLIFT

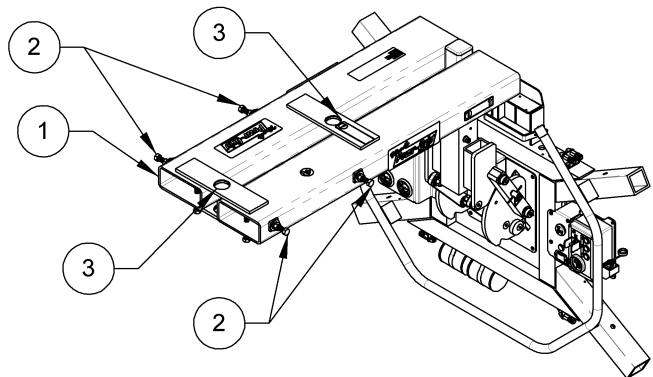
Follow the directions for vacuum lifter ASSEMBLY in the lifter's instruction manual, but instead of suspending the lifter from a crane or other hoisting device, modify the procedure as follows:

- 1) Select a forklift which has the capacity and stability required for use with the vacuum lifter:  
When the lifter is installed on the forklift, it places the load's center of gravity further away from the forklift than a load which rests directly on the forks. **If the operator fails to take this into consideration, using the lifter could overload the forklift and cause it to tip over.** Use the following criteria to determine whether a particular forklift could be used:

Calculate the combined weight of the lifter, its options and its maximum load (see SPECIFICATIONS: Lifter Weight and Maximum Load Capacity in the lifter's instruction manual, as well as SPECIFICATIONS: Weight Increase preceding). The forklift must have sufficient load capacity for this combined weight when the load's center of gravity is located 8 3/4" [222 mm] outward from the fork tips or 50 3/4" [1289 mm] outward from the fork stops, whichever places the load at a greater distance from the forklift's front wheels.

Note: Any application of the lifter and the Forklift Adapter must conform to all statutory or regulatory standards that relate to the forklift when used in its geographical location (eg, OSHA Standard 1910.178 "Powered industrial trucks" for forklifts used in the USA). Consult the forklift instructions as needed for further information about its use.

- 2) Insert the forks into the fork tubes (1) of the Forklift Adapter: The forks must be inserted a minimum of 30" [76 cm] for the Forklift Adapter to be mounted correctly. The forks should fit inside the tubes as far as possible but must not extend more than 1" [2.5 cm] beyond the end of the tubes. The Forklift Adapter must be oriented as shown in the illustration. **Using the Forklift Adapter any other way can endanger the operator or damage the lifter or load.**



- 3) Use the fork securing screws (2) and lock nuts to secure the Forklift Adapter to the forks: First tighten all 8 screws down snugly and then retighten each one to 20-25 ft-lbs [27-34 N-m] of torque. While holding each fork securing screw to prevent it from turning, tighten the corresponding lock nut against the fork tube [to 25-30 ft-lbs [34-41 N-m] of torque) to secure the screw in place.
- 4) Use a safety strap or chain to secure the Forklift Adapter to the forks, in case it should come loose for any reason: Select a safety strap or chain rated to at least 500 lbs [227 kg] tensile strength, and run it through both of the back or both of the middle safety strap brackets (3). Then attach the strap or chain to the forks so as to prevent the Forklift Adapter from coming off under any circumstances. **This is a mandatory safety procedure.**

**⚠ WARNING: Never use adapted lifter with forklift unless safety strap is installed.**

- 5) Once the adapted lifter is securely attached to the forklift, complete the ASSEMBLY as directed in the lifter's instruction manual. Remember to perform Operational and Load Tests for the lifter as directed in MAINTENANCE: TESTING SCHEDULE of the lifter's instruction manual.

# OPERATION

---

Make sure that the adapted vacuum lifter is correctly installed on an appropriate forklift, as directed in the preceding INSTALLATION section. When the lifter is installed on a forklift, it should be able to tilt, rotate, and attach to or release loads just like a standard lifter. Operate the lifter as directed in the OPERATION section of the lifter's instruction manual, but substitute appropriate forklift functions whenever the lifter's instruction manual calls for the use of a crane or hoisting equipment. Consult the forklift instructions as needed for further information about its use.

Note: In addition to the WARNINGS stated in the preceding section and the lifter's instruction manual, the operator must follow all statutory or regulatory requirements that relate to the forklift when used in its geographical location (eg, OSHA Standard 1910.178 "Powered industrial trucks" for forklifts used in the USA).

# MAINTENANCE

---

When performing inspections and tests of the lifter as directed in the MAINTENANCE section of the lifter's instruction manual, be sure to include all relevant parts of the Forklift Adapter whenever applicable.

# REPLACEMENT PARTS LIST

---

<b>Stock No.</b>	<b>Description</b>	<b>Qty.</b>
12826MM	Flat Washer – 1/2"	8
12760	Lock Washer – 1/2"	8
11124	Hex Nut – 1/2-13 Thread	8
10858AM	Bolt – 1/2-13 Thread x 4½" – Grade 5 – Full-Thread Type (aka fork securing screw)	4
10850AM	Bolt – 1/2-13 Thread x 3½" – Grade 5 – Full-Thread Type (aka fork securing screw)	2
10846AM	Bolt – 1/2-13 Thread x 3" – Grade 5 – Full-Thread Type (aka fork securing screw)	2

***SERVICE ONLY WITH IDENTICAL REPLACEMENT PARTS,  
AVAILABLE AT WPG.COM OR THROUGH AN AUTHORIZED WPG DEALER***

# LIMITED WARRANTY

---

Powr-Grip products are carefully constructed, thoroughly inspected at various stages of production, and individually tested. They are warranted to be free from defects in workmanship and materials for a period of one year from the date of purchase.

If a problem develops during the warranty period, follow the instructions hereafter to obtain warranty service. If inspection shows that the problem is due to defective workmanship or materials, Powr-Grip will repair the product without charge.

## ***WARRANTY DOES NOT APPLY WHEN:***

Modifications have been made to the product after leaving the factory.

Rubber portions have been cut or scratched during use.

Repairs are required due to abnormal wear and tear.

The product has been damaged, misused, or neglected.

If a problem is not covered under warranty, Powr-Grip will notify the customer of costs prior to repair. If the customer agrees to pay all repair costs and to receive the repaired product on a C.O.D. basis, Powr-Grip then will proceed with repairs.

## **TO OBTAIN REPAIRS OR WARRANTY SERVICE**

For purchases in *North America*:

Contact the Technical Service Department at Wood's Powr-Grip Co. When factory service is required, ship the complete product--prepaid--along with your name, address and phone number to the street address hereafter.

For purchases in *all other localities*:

Contact your dealer or the Technical Service Department at Wood's Powr-Grip Co. for assistance.

Wood's Powr-Grip Co., Inc.  
908 West Main St. / P.O. Box 368  
Laurel, MT USA 59044

phone 800-548-7341

phone 406-628-8231

fax 406-628-8354





