

KEEP FOR FUTURE REFERENCE

INSTALLATION INSTRUCTIONS



908 W. Main • P.O. Box 368
Laurel, MT USA 59044
800-548-7341 (phone)
406-628-8231 (phone)
406-628-8354 (fax)
www.WPG.com

 **INTENDED FOR USE BY SKILLED
TECHNICAL PROFESSIONALS • READ
AND UNDERSTAND BEFORE INSTALLING**



**VPFS10T
VACUUM PAD
CONVERSION KIT**


For model MT8 and PT10 stone lifters

Stock numbers: 93085, 58392

TABLE OF CONTENTS

SPECIFICATIONS	2
INSTALLATION	3
TO REMOVE EXISTING HV11(F) PADS	3
TO INSTALL NEW VPFS10T PADS	4
MAINTENANCE	5
TO REPLACE SEALING RING IN VPFS10T PADS	5
REPLACEMENT PARTS.....	6
LIMITED WARRANTY	7
TO OBTAIN REPAIRS OR WARRANTY SERVICE.....	7

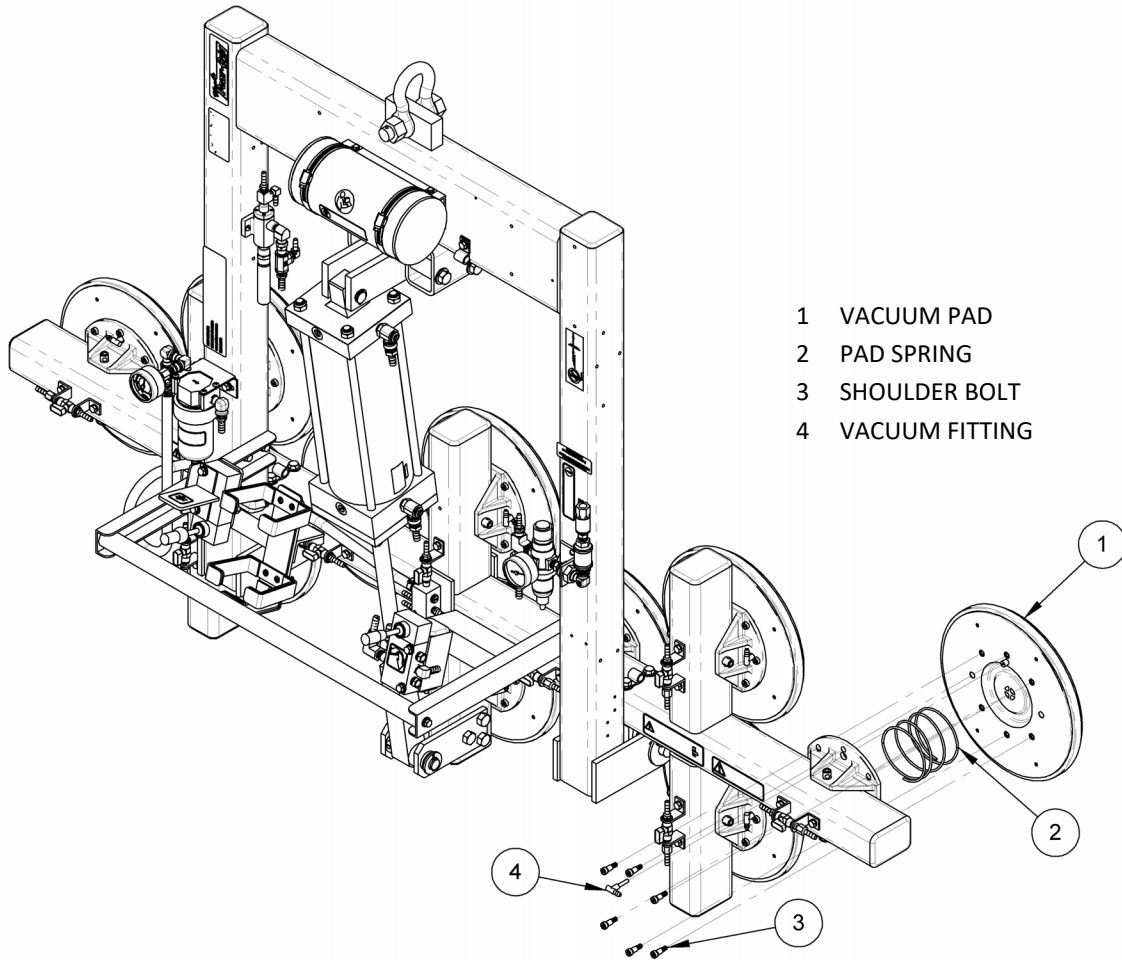
SPECIFICATIONS

Stock Numbers	93085 (for use with MT8 stone lifters) 58932 (for use with PT10 stone lifters)
Product Description	These kits convert MT8HV11 and PT10HV11 vacuum lifters (with HV11[F] pads) to MT810T and PT10T vacuum lifters (with VPFS10T pads), respectively.
Vacuum Pads	10" [25 cm] nominal diameter, standard rubber with replaceable sealing rings for rough or textured surfaces (Model VPFS10T)
Pad Spread Increase	3/4" [19 mm] (see Pad Spread in "SPECIFICATIONS" in lifter's <i>OPERATING INSTRUCTIONS</i>).
 Product Weight	8 lbs [3.6 kg] when installed on a MT8 vacuum lifter 10 lbs [4.5 kg] when installed on a PT10 vacuum lifter <i>Note: This weight should be added to the Lifter Weight when determining hoisting equipment capacity.</i>

Note: Before installing the VPFS10T Vacuum Pad Conversion Kit read, understand and follow the corresponding lifter's OPERATING INSTRUCTIONS. Intended use, operation, storage, inspections, tests and maintenance in the lifter's instructions should be understood to include this conversion kit, when relevant. All warnings in the "SAFETY" section, as well as alerts in other sections, are applicable when using the VPFS10T Vacuum Pad Conversion Kit.

INSTALLATION

TO REMOVE EXISTING HV11(F) PADS



Note: A model PT10 vacuum lifter is shown.

- 1) Suspend the vacuum lifter from a hoist to provide unhindered access to the vacuum pads (item 1).
- 2) Disconnect each vacuum hose from its corresponding vacuum pad: Carefully pull the vacuum fitting (item 4) out from the pad.

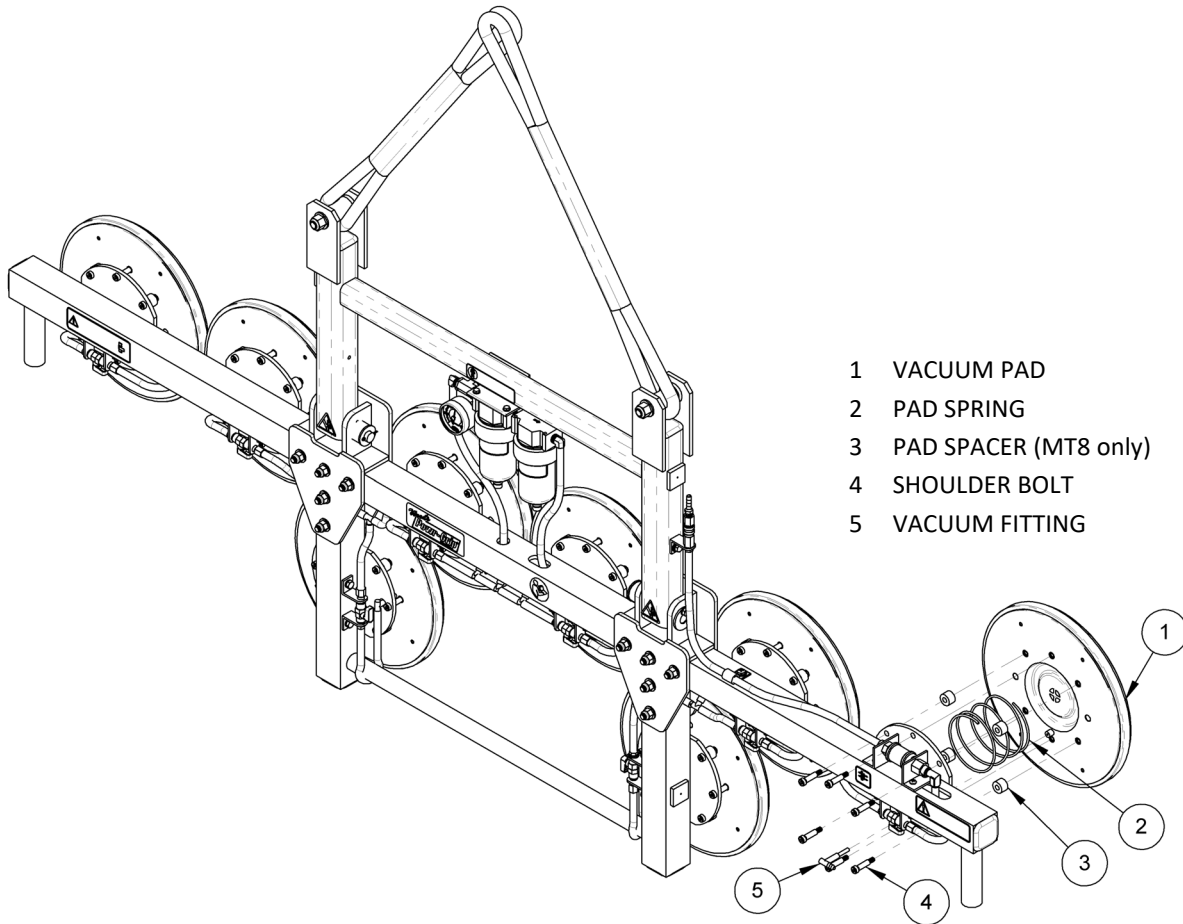
Note: For MT8 lifters, carefully remove the vacuum fitting from the hose, as well.

- 3) Use a hex key to remove the 6 shoulder bolts (item 3) that attach each vacuum pad to a pad mount.

Note: For PT10 lifters, save the shoulder bolts to install the new pads.

INSTALLATION

TO INSTALL NEW VPFS10T PADS



Note: A model MT8 vacuum lifter is shown.

- 1) Install each new vacuum pad (item 1; supplied), along with a new pad spring (item 2; supplied) and 6 shoulder bolts (item 4). Tighten all shoulder bolts securely.

Note: For MT8 lifters, also install 4 pad spacers (item 3; supplied) and use the longer shoulder bolts (supplied), as shown above. For PT10 lifters, use the saved bolts.

- 2) Connect each vacuum hose to the corresponding vacuum pad: Insert the vacuum fitting (item 5) fully into the pad nipple, using a small amount of glycerin to ease installation.

Note: For MT8 lifters, first replace the vacuum fittings with the longer ones (supplied), to accommodate the spacers. Inspect each vacuum hose for damage, and repair or replace it, as necessary, when connecting to the fitting (see "REPLACEMENT PARTS" in lifter's OPERATING INSTRUCTIONS).

- 3) Perform the "Vacuum Test" and the "Rated Load Test" (see "TESTING" in lifter's OPERATING INSTRUCTIONS) before resuming normal operation of the lifter.

MAINTENANCE

TO REPLACE SEALING RING IN VPFS10T PADS

Replace sealing rings (#49724RT or #49724TT) as follows:

- 1) Remove the old sealing ring (fig. 1A).

Note: Make sure the entire vacuum pad is clean, including the mounting groove.

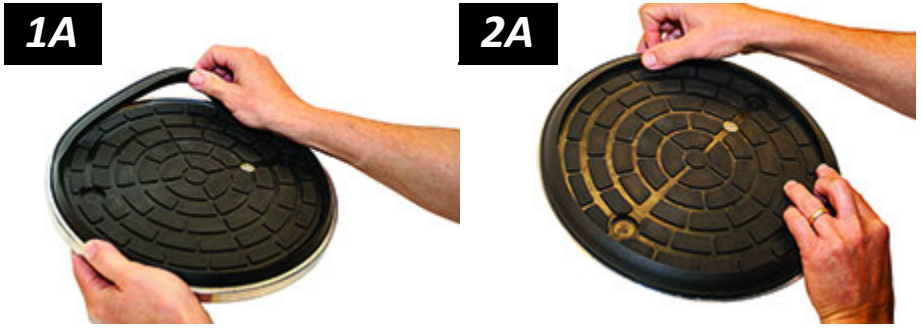
- 2) Place the inside edge of a new sealing ring against the inside edge of the mounting groove (fig. 2A).

- 3) Push the sealing ring into the mounting groove, beginning in 4 locations as shown circled in fig. 3A.

- 4) Push gently and firmly on the outside edge of the sealing ring until the flat side fits flush against the bottom of the mounting groove (fig. 4A). A pad ring installation tool (circled in fig. 4A) makes this step easier (see [“REPLACEMENT PARTS”](#)).

- 5) Make sure the sealing ring seats securely in the mounting groove, all the way around the vacuum pad (fig. 5A).

Note: If any part of the sealing ring comes out of the mounting groove, inspect the sealing ring for damage and reinstall an undamaged sealing ring.



REPLACEMENT PARTS

Stock No.	Description	Qty.
65010	Pad Spring – Coil Type	8/10
53124	Pad Fitting – Elbow – 5/32" ID – Long Stem (for MT8)	8
53122	Pad Fitting – Elbow – 5/32" ID (for PT10)	10
49724TT	Sealing Ring Insert – Closed Cell Foam (for VPFS10T pads)	8/10
49724RT	Sealing Ring Insert – Heat-Resistant Rubber (for VPFS10T pads)	8/10
49672FT	Vacuum Pad – Model VPFS10T / 10" [25 cm] Diameter – w/Replaceable Sealing Ring	8/10
29353	Pad Cover	8/10
20050	Pad Ring Installation Tool	1
15632	Pad Filter Screen – Small	8/10
12815DM	5/16" ID x 3/4" OD x 1/2" Nylon Spacer (for MT8)	32
10904	Shoulder Bolt – Socket Head – 5/16" X 1" X 1/4-20 Thread (for MT8)	48
10900	Shoulder Bolt – Socket Head – 5/16" x 1/2" x 1/4-20 Thread (for PT10)	60

**SERVICE ONLY WITH IDENTICAL REPLACEMENT PARTS,
AVAILABLE AT WPG.COM OR THROUGH AN AUTHORIZED WPG DEALER**

LIMITED WARRANTY

Wood's Powr-Grip® (WPG) products are carefully constructed, thoroughly inspected at various stages of production, and individually tested. They are warranted to be free from defects in workmanship and materials for a period of one year from the date of purchase.

If a problem develops during the warranty period, follow the instructions below to obtain warranty service. If inspection shows that the problem is due to defective workmanship or materials, WPG will repair the product without charge.

Warranty does not apply when ...

- modifications have been made to the product after leaving the factory
- rubber portions have been cut or scratched during use;
- repairs are required due to abnormal wear and tear, and/or;
- the product has been damaged, misused or neglected.

If a problem is not covered under warranty, WPG will notify the customer of costs prior to repair. If the customer agrees to pay all repair costs and to receive the repaired product on a C.O.D. basis, then WPG will proceed with repairs.

TO OBTAIN REPAIRS OR WARRANTY SERVICE

For purchases in *North America*:

Contact the WPG Technical Service Department. When factory service is required, ship the complete product – prepaid – along with your name, address and phone number to the street address listed at the bottom of this page. WPG may be reached by phone or fax numbers listed below.

For purchases in all *other localities*:

Contact your dealer or the WPG Technical Service Department for assistance. WPG may be reached by phone or fax numbers listed below.

Wood's Powr-Grip Co., Inc.

908 West Main St.

Laurel, MT 59044 USA

406-628-8231 (phone)

800-548-7341 (phone)

406-628-8354 (fax)

