

KEEP FOR FUTURE REFERENCE

INSTALLATION INSTRUCTIONS



908 W. Main • P.O. Box 368

Laurel, MT USA 59044

(1) 800-548-7341

(1) 406-628-8231

www.wpg.com

 **INTENDED FOR USE BY QUALIFIED
SERVICE PERSONNEL • READ AND
UNDERSTAND BEFORE INSTALLING THIS KIT**



WOBBLE PISTON PUMP CONVERSION KIT

Stock numbers: 93033, 93033AM,
93033B, 93033BM

Original Instructions © Wood's Powr-Grip Co., Inc.

TABLE OF CONTENTS

| | |
|---|----------|
| ASSEMBLY | 2 |
| TO MOUNT THE PUMP | 2 |
| TO WIRE THE PUMP | 2 |
| TO CONNECT THE VACUUM HOSES..... | 3 |
| REPLACEMENT PARTS..... | 4 |
| LIMITED WARRANTY | 5 |
| ABOUT THE LIMITED WARRANTY | 5 |
| Obtaining Warranty Service or Repair Service..... | 5 |

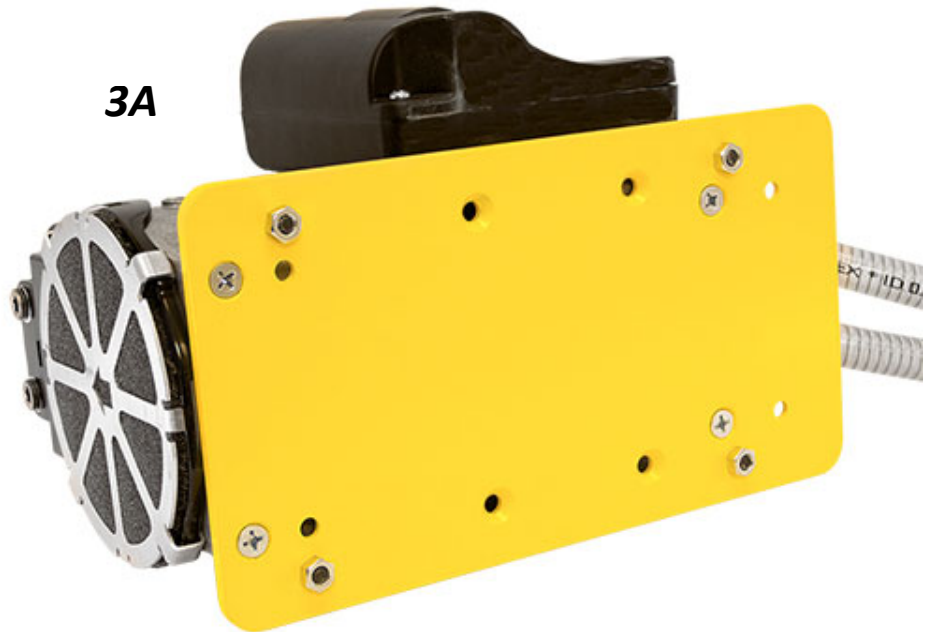
TO MOUNT THE PUMP

- 1) Place the lifter's power switch in the "off" position (○). Disconnect the lifter's power cable from the power source.
- 2) Remove the existing vacuum pump, including the mounting plate.

Note: If a capacitor enclosure is present, remove it, to allow installation of the mounting screws. Then reinstall the enclosure after step 3.

- 3) Attach the new pump and its attached mounting plate (fig. 3A) securely using the four 1/4-20 screws provided.

Note: Different screws may be required, depending on the age and model of the lifter.



TO WIRE THE PUMP

- 1) Determine whether the wires provided are long enough to reach the power enclosure. If not, add additional wire to the vacuum pump's wiring harness (fig. 1B).

Note: Any wire added must be 18 AWG or greater.

- 2) Route the wiring harness, to avoid damage or interference with any moving parts of the lifter.
- 3) Wire the pump to the lifter (see wiring diagram in these *INSTALLATION INSTRUCTIONS*).

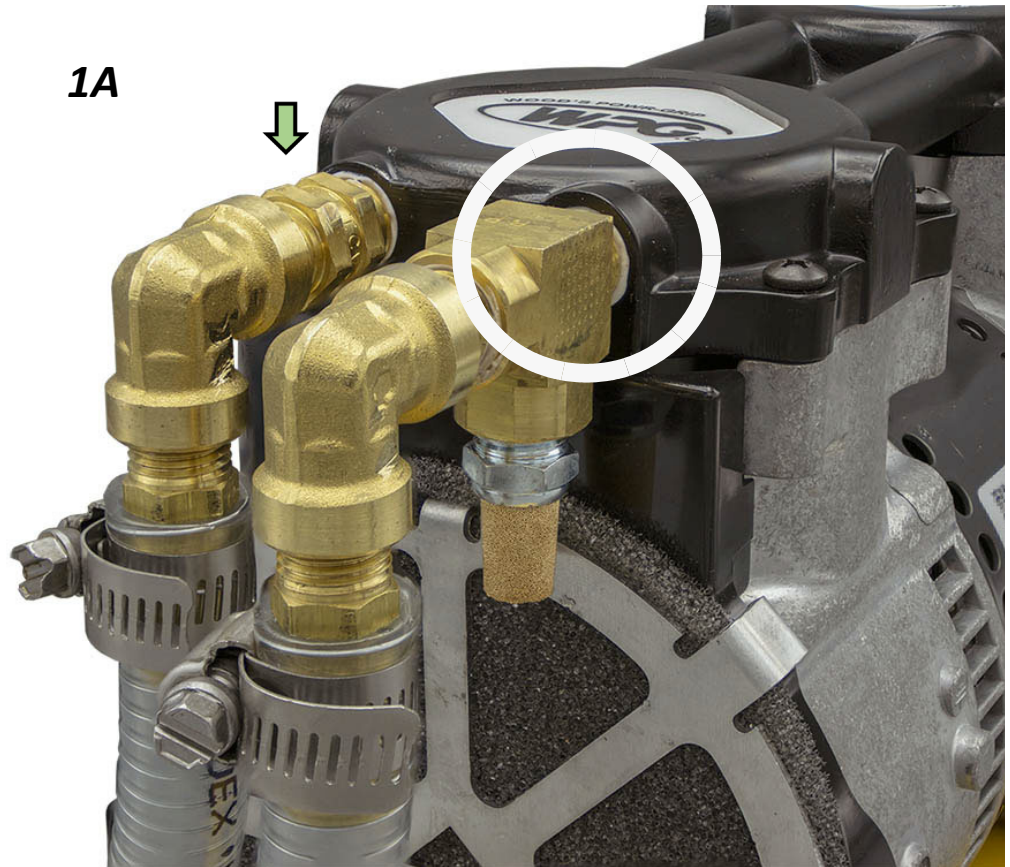


ASSEMBLY

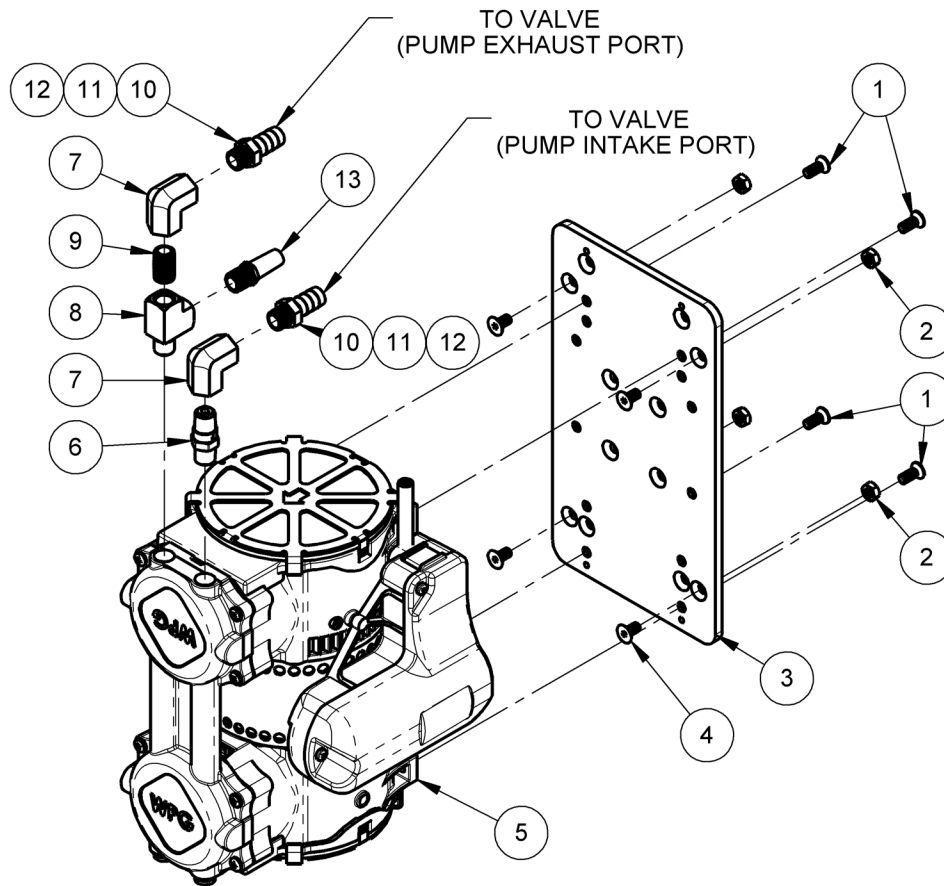
TO CONNECT THE VACUUM HOSES

Note: The conversion kit ships with its vacuum hoses attached and secured at the vacuum pump.

- 1) Connect the hose leading from the vacuum port equipped with a check valve (see arrow in fig. 1A) to the lifter's control valve vacuum port. Then secure it with the supplied hose clamp.
- 2) Connect the hose leading from the exhaust port (circled in fig. 1A) to the lifter's control valve exhaust port. Then secure it with the supplied hose clamp.
- 3) Perform the Vacuum Test (see INSPECTIONS AND TESTS: TESTING in the lifter's *OPERATING INSTRUCTIONS*).



REPLACEMENT PARTS



| Reference No. | Stock No. | Description | Qty. |
|---------------|-----------|---|------|
| 1 | 10383 | Flat Head Phillips Machine Screw – 1/4-20 Thread x 5/8" – Zinc Plated | 4 |
| 2 | 11114 | Machine Screw Hex Nut – 1/4-20 Thread | 4 |
| 3 | 54170 | AC Vacuum Pump Conversion Mounting Plate | 1 |
| 4 | 10522 | Flat Head Socket Cap Screw – 1/4-20 Thread x 1/2" | 4 |
| 5 | 66126 | Vacuum Pump – Wobble Piston Type – 5 SCFM [141.5 liters/minute] | 1 |
| 6 | 65212 | Check Valve – 1/4 MNPT – 1.0 PSI Cracking Pressure | 1 |
| 7 | 14102 | Elbow – 1/4 NPT – Brass | 2 |
| 8 | 14108 | Street Tee – 1/4 NPT | 1 |
| 9 | 14130 | Close Nipple – 1/4 NPT | 1 |
| 10 | 15106 | Straight Fitting – 1/2" Barb x 1/4 MNPT | 2 |
| 11 | 16212 | Stainless Steel Hose Clamp – 1/2" to 1-1/8" | 4 |
| 12 | 65444 | Vacuum Hose – 1/2" ID | * |
| 13 | 16100AZ | Filter – 1/4 NPT – Brass | 1 |

* Length as required; hose is sold by the inch (approx 2.5 cm).

**SERVICE ONLY WITH IDENTICAL REPLACEMENT PARTS,
AVAILABLE AT WPG.COM OR THROUGH AN AUTHORIZED WPG DEALER**

LIMITED WARRANTY

ABOUT THE LIMITED WARRANTY



Note: Read the [WARRANTY RETURN FORM](#) at [wpg.com](#) for important details about the Limited Warranty.

Wood's Powr-Grip® (WPG) products are warranted to be free from defects in manufacturing and materials for 1 year from the date of purchase.

If a problem develops during the warranty period, follow the instructions below to obtain warranty service. If inspection shows that the product has a defect, WPG will repair or replace the product without charge.



Obtaining Warranty Service or Repair Service

For customers in the U.S. and Canada: Go to the [EXCHANGES, REPAIRS, & WARRANTIES](#) page at [wpg.com](#) and click the applicable link. Alternatively, you may contact the WPG Technical Service Department (see contact information below).

For customers in all other localities: Contact the WPG Technical Service Department (see contact information below) or your dealer for assistance.

| ADDRESS | EMAIL | PHONE |
|---|--|--------------------------------------|
| Wood's Powr-Grip Co., Inc. 908 West Main St. Laurel, MT USA 59044 | contactus@wpg.com | (1) 800-548-7341 (1) 406-628-8231 |

| | | | | | |
|--|--|---|-----------------------|----------------------------------|---------------------|
| WIRE LEGEND: CONTROLLED BY WIRING SYMBOLS DRAWING EXCEPT AS NOTED AND BELOW. | | TYPE: STANDARD | | FILE DIRECTORY: FILE (SHEET): | |
| LINE STYLES AND WIDTHS FOR WIRE UNLESS NOTED OTHERWISE. | | 700-W04 [W04] | | | |
| N/A 18AWG N/A 16AWG N/A 14AWG N/A | | THIS DRAWING IS THE PROPERTY OF WOOD'S POWR-GRIP CO., INC. IT IS LOANED WITH THE UNDERSTANDING THAT NEITHER IT NOR ANY INFORMATION CONTAINED THEREIN WILL BE COPIED, PUBLISHED OR TRANSMITTED TO OTHERS WITHOUT EXPRESS WRITTEN PERMISSION. | | | |
| PRODUCT MANAGER: BRYAN S. | | WPG LAUREL, MONTANA U.S.A. | | | |
| DATE: 02/05/2016 | | STANDARD PARTS N/A | | | |
| CHECKED: <i>OR</i> | | 120/240VAC 5SCFM WOBBLE PISTON VAC PMP WIRING SCHEMATIC D700-W04 [W04] | | | |
| APPROVED: <i>AM</i> | | SIZE: A | SCALE: NONE | REVISION: 03.A | ECN NUMBER: 5078 |
| | | ECN DATE: 07/07/2022 | | ECN BY: CCH | EST. WEIGHT: N/A |

