



AEGIS TRI-POWER UV LED CURING LAMP

LMP2008 OPERATION AND MAINTENANCE INSTRUCTIONS

FEATURES

1. LENS
2. SUCTION CUP
3. BODY
4. ENDCAP
5. POWER PORT
6. BLUE INDICATION LIGHT
7. POWER SWITCH
8. POWER CABLE
9. RED INDICATOR LIGHT
10. 12V POWER PLUG
11. SOCKET
12. AC/DC CONVERTER



The LED UV Tri-Power Curing Lamp uses 365 N-m wavelength to cure resin during auto glass repair.

OPERATION

To Use the Lamp



Wear eye protection whenever you look into direct or reflected rays from any UV light source, because radiation from UV light can cause injury to eyes.

1. Make sure the battery is fully charged (see To Charge the Battery).
2. Lightly moisten Suction Cups with water or glass cleaner.
3. Position the lamp over the repair area on the glass. Then press it until all suction cups seal on the glass.
4. Place the Power Switch in the “on” position (|), to begin the curing process. Cure for the length of time specified in the repair instructions (see Notes 1 and 2).
5. To stop the curing process, place the power switch in the “off” position (○).
6. Remove the lamp from the glass: Pull up the tabs of each suction cup to release them. Then lift the lamp off the glass (see Caution 1).



NOTE 1: The lamp’s run time is approximately 150 minutes when used continuously. The Blue Indicator Light quickly flashes when 20 minutes of run time remains.



NOTE 2: If the lamp’s LED lights go out during an auto glass repair, connect to the appropriate power source as described in “To Charge the Battery” and continue use. When the lamp is connected and the power switch is in the “on” position (|), the battery is still charging.



CAUTION 1: Do not pull the lamp away from the glass surface if the suction cups are not fully released, because this could damage the cups.

To Charge the Battery

You can use either the supplied Power Cable or the supplied power cable **and** supplied AC/DC Converter.

- **Power cable:** Connect the 12V Power Plug to the vehicle’s 12V power outlet. Then plug the other end of the power cable to the Power Port, to begin charging (see Note 3).



NOTE 3: The 12V power plug’s Red Indicator Light turns on when correctly connected.



- **Power cable and AC/DC converter:** Connect the 12V power plug of the power cable to the Socket on the AC/DC converter. Then plug the other end of the power cable into the power port. Next, connect the AC/DC converter to an appropriate AC outlet (see specifications on converter), to begin charging (see Note 4).



NOTE 4: To use the AC/DC converter outside of North America, use a plug adapter (not supplied) appropriate for your region.

The lamp's Blue Indicator Light flashes slowly during charging, which takes approximately 90 minutes. It turns a solid color when the lamp is fully charged.

Disconnect the lamp from the power source after charging is completed.

MAINTENANCE



NOTE: For replacement parts, call WPG at (1) 800-548-7341 or (1) 406-628-8231.




CAUTION: All service to electrical components must be done by qualified service personnel.



NOTE: Make sure to place the lamp on a smooth flat surface before servicing.



CAUTION: Make sure lamp is disconnected from power source and switch is in "off" position () before cleaning.

To Replace the Suction Cups

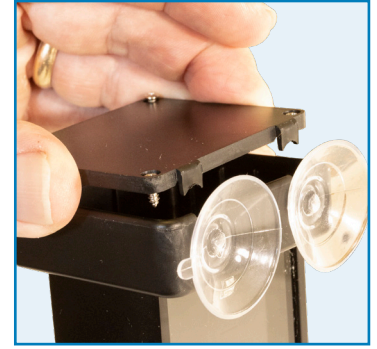


1. From either Endcap of the lamp's Body, remove the 4 Philips-head screws using a #0 Philips screwdriver at least 5" (13 cm) in length.
2. Detach the endcap plate (see Caution 2).

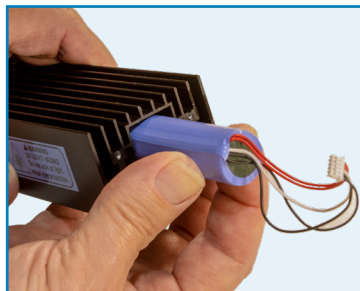
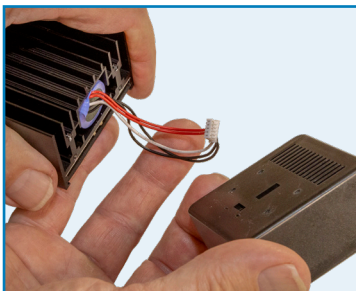
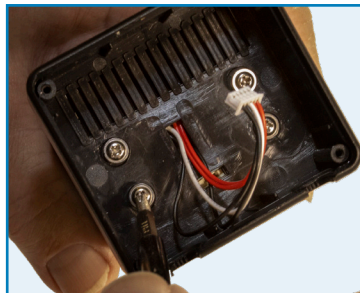
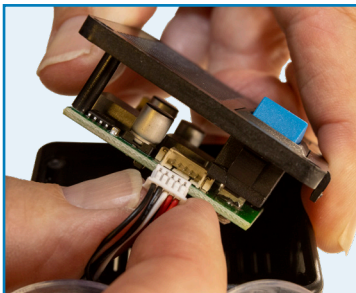
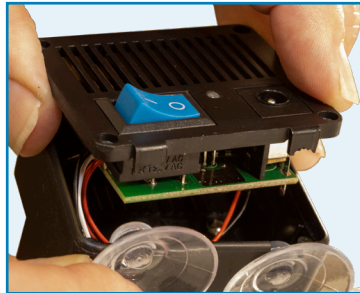


CAUTION 2: If you are detaching the plate that has the power switch, avoid disconnecting or damaging the wiring.

3. Slide out the old Suction Cups.
4. Slide in the new suction cups. Make sure each cup's tab points outward, for easy removal from the glass.
5. Reinstall the endcap plate and secure by reinstalling the screws. Do not overtighten screws.
6. Repeat steps 1-5 with the other endcap.



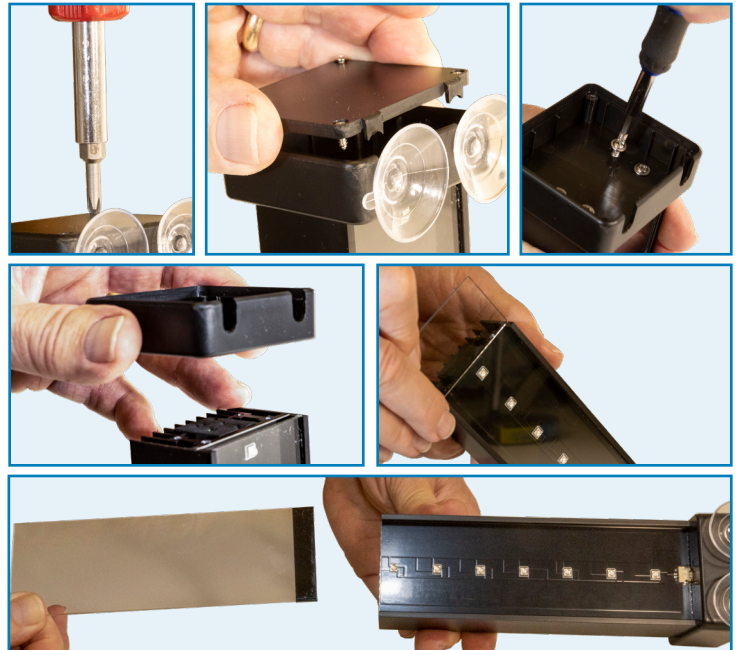
To Replace the Battery



1. From the Endcap **with** the Power Switch, remove the 4 screws using a #0 Philips screwdriver at least 5" (13 cm) in length.
2. Detach the endcap plate from the lamp Body, taking care to avoid disconnecting or damaging the wiring.
3. Slide out the Suction Cups.
4. Remove both wire connectors from the circuit board.
5. Using the same screwdriver, remove the 4 screws from inside the endcap.
6. Detach the endcap and carefully slide the wires through the endcap holes.
7. Slide out the battery pack.
8. Install the new battery pack. Then reverse steps 1-7. Do not overtighten screws.

To Replace the Lens

1. From the Endcap *without* the Power Switch, remove the 4 screws using a #0 Philips screwdriver at least 5" (13 cm) in length. Then detach the endcap plate from the lamp Body.
2. Using the same screwdriver, remove the 4 screws from inside the endcap. Then detach the endcap.
3. Slide out the old Lens from its tracks, noting the position of the lens' black strip.
4. Install the new lens in the same orientation. Then reverse steps 1-4. Do not overtighten the screws.



Limited Warranty

AEGIS Tools International® products are warranted to be free from defects in manufacturing or materials for 1 year from the date of purchase. Read the [Warranty Return Form](#) at aegistools.com for important details about the warranty.

If a problem develops during the warranty period, follow the instructions below to obtain warranty service. If inspection shows that the product has a defect, AEGIS will repair or replace the product without charge.

To Obtain Warranty Service or Repair Service

For customers in the U.S. and Canada: Go to the [Warranty](#) page at aegistools.com and click the applicable link. Alternatively, you may contact AEGIS Tools International (see contact information).

For customers in all other localities: Contact AEGIS Tools International (see contact information) or your dealer for assistance.

CONTACT INFORMATION

AEGIS Tools International, Inc.

908 West Main St.

Laurel, MT 59044 USA

Email: contactus@wpg.com

Phone: (1) 800-548-7341 or (1) 406-628-8231

www.AegisTools.com



Aegis Tools by Wood's Powr-Grip Co., Inc. | 908 West Main Street | PO Box 368 | Laurel, MT USA 59044
www.aegistools.com | orderdesk@wpg.com