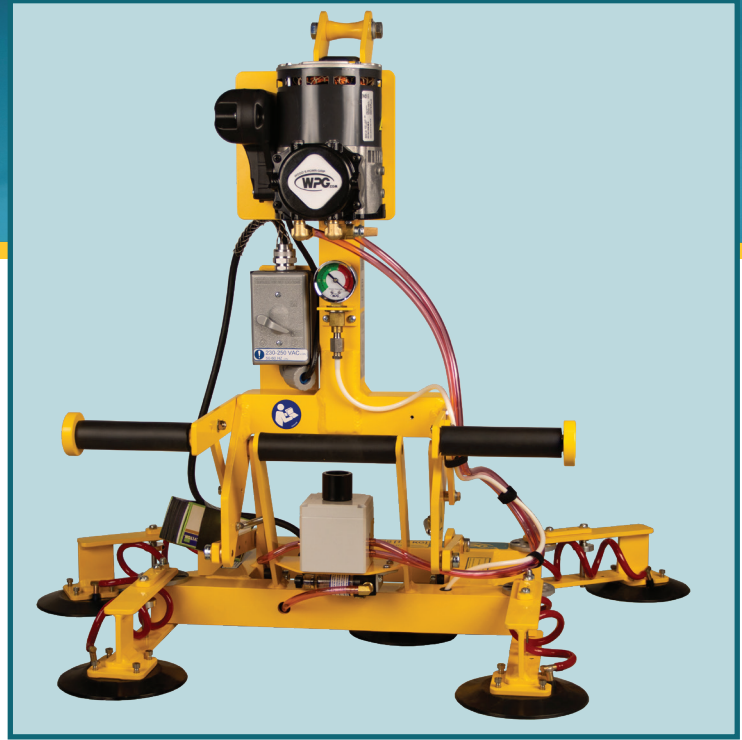


QUADRA-TILTERS 200 & 300

MODELS: MTA4LP6FAC & MTA6LP6FAC

These Powr-Grip[®] vacuum lifters feature multiposition pad arms and our innovative Quadra-Tilt linkage, which radically reduces the effort of tilting loads.



Quadra-Tilt System

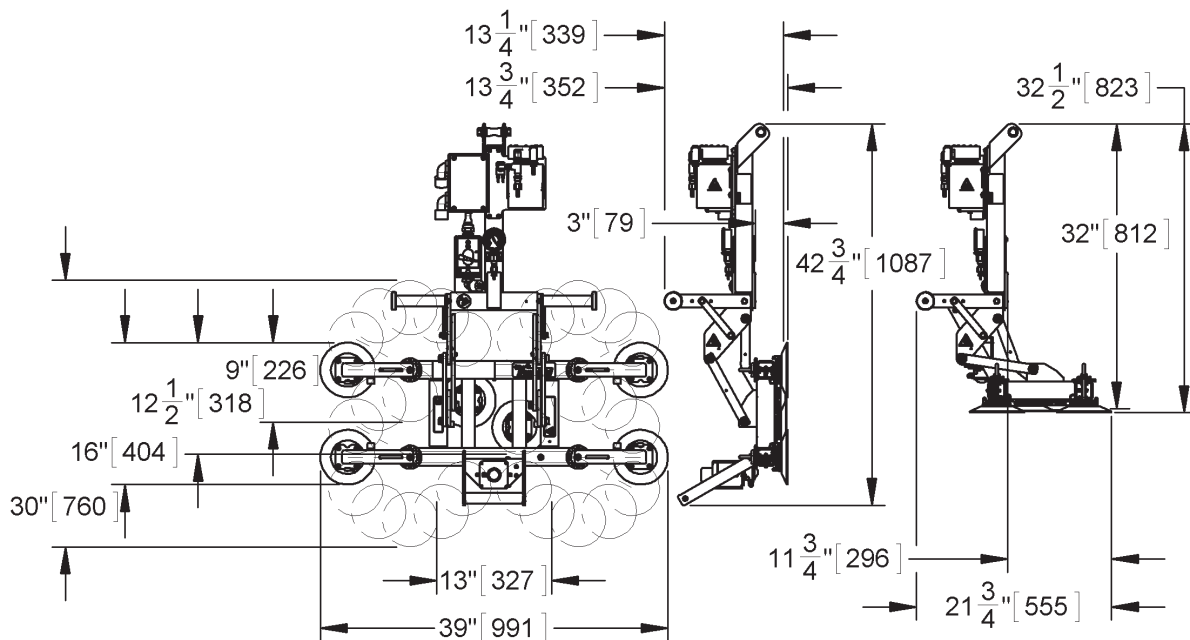
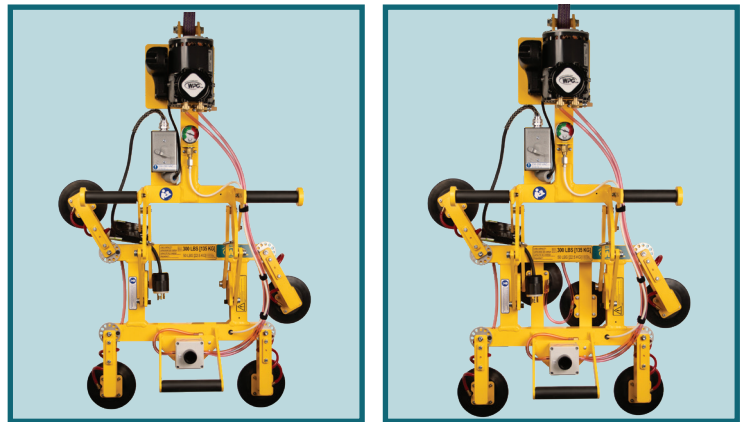
Four-bar linkage makes tilting easier!

Movable Pad Arms

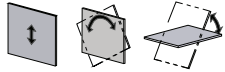
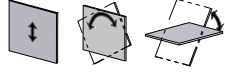
Adjust to match dimensions of different loads — tool-free!

Light Weight

Makes this compact lifter easy to handle



MTA6LP6FAC SHOWN

Model	MTA4LP6FAC	MTA6LP6FAC
Maximum Load Capacity	200 lbs (90 kg)	300 lbs (135 kg)
Load Movement	Assisted manual tilt, 90° between upright and flat 	Assisted manual tilt, 90° between upright and flat 
Standard Operating Power	120 volts AC, 60 hertz, 6 amps (240 volts AC, 60 hertz, 3 amps also available)	
Adjustable Pad Spread	Length: Minimum: 13" (33 cm), Maximum: 39" (99 cm) Width: Minimum: 9" (23 cm), Maximum: 30" (76 cm)	
Attach/Release Times	1 second/ 1 second (approximately)	2 seconds/ 1 second (approximately)
Number/Size of Pads	4 / 6" (15 cm) diameter vacuum pads	6 / 6" (15 cm) diameter vacuum pads
Lifter Weight	65 lbs (30 kg)	70 lbs (32 kg)

STANDARD FEATURES

Multiple Control Handles

Provide a choice of different operator positions for optimal ergonomics and efficiency

Twist-Lock Electric Plug

Provides a secure connection to the AC power source, to prevent accidental disconnection

Vacuum Gauge

Features green and red zones to clearly indicate whether vacuum level is sufficient for lifting

Vacuum Line Filter

Protects the vacuum generating system from contaminants

Movable Pad Arms

Adjust quickly and easily to accommodate many different window sizes and shapes

Spring-Mounted Vacuum Pads

Automatically adjust to match the angle of load surfaces, easing attachment

Blow-Off Release

Reverses airflow to quickly release loads, without after-stick

AVAILABLE OPTIONS

Air (Venturi) Power System (MTA4LP6FAIR, MTA6LP6FAIR)

Enables lifter to operate using compressed air supply already available in many production facilities (Specifications may not be as listed. Please contact us for more information.)

Vacuum Loss Warning Buzzer (93780AM)

Uses advanced logic circuitry to monitor vacuum level and sound an alarm only when insufficient vacuum could be hazardous

Voltage Adaptation

Enables lifters to operate using AC voltages best suited to specific uses and geographical areas

2" (5 cm) Pad Spacers (97461)

Enable lifter to handle windows with mullions or other loads with surface obstructions

Alternative Pad Compounds

Specially designed for heat resistance, marking resistance, coated surfaces and other purposes

Alternative Pad Frame Dimensions and Configurations

Enable lifter to handle additional load sizes and shapes

DESIGN STANDARDS

ASME B30.20 (BTH-1 Design Category "B", Service Class "0"): Industry standards established by the American Society of Mechanical Engineers (ASME) and published by the American National Standards Institute (ANSI)

Based on product information at time of publication.

Environmental conditions can affect product performance and longevity; consult the product instructions on WPG.com or contact a Technical Sales Representative for more information.